

Rate from St. Louis **\$69.90**

Rate from Kansas City **82.76**

THESE FEATURES ARE INCLUDED IN OUR RATE OF \$69.90

1. Round trip coach ticket—15-DAY LIMIT. 2. All meals except those in New York (no meals included between Kansas City and St. Louis going or returning). 3. Hotel accommodations on the basis of two to a room with private bath (single rooms \$4.00 additional). 4. Sight-seeing in Toronto, Niagara Falls, New York City, and Washington. 5. Two Souvenir Admission tickets to the World's Fair. 6. Two return transfers from the Fair Grounds to Manhattan. 7. Transfer of passenger and baggage at all points. 8. Services of an experienced conductor.

Pullman rates will be quoted upon application.

SPECIAL NOTICE OF STOP-OVER PRIVILEGES
You Can Extend This Tour to Two Complete Weeks
At Small Extra Cost

Your rail tickets are GOOD FOR 15 DAYS and it is possible for you to extend your tour to include additional time in New York, a side trip by motor coach to New England, Atlantic City, a delightful four-day cruise to Bermuda at the low cost of \$45, as well as many other interesting trips that are available in and about New York. Merely ask us and we shall furnish complete information on these and many more.

RESPONSIBILITY: The American Express Company is not the agent of any railroad referred to herein, except insofar as the American Express Company shall actually pay over to any such railroad the amount required for transportation, and in such event said railroad shall incur no responsibility or liability beyond that of a common carrier in the ordinary and regular course of business in accordance with the tariff applicable to the transportation for which such payment shall have been made.

The American Express Company acts only as agent for the owners or contractors providing vehicles for transportation or other services, except railroads as above stated, and all tickets are issued subject to any and all terms and conditions under which vehicles or transportation or any other services whatsoever are provided or which may be made by such owners or contractors, and the issuance and acceptance of such tickets shall be deemed to be consent to the further condition that neither the American Express Company nor any of its affiliated or subsidiary companies, nor any railroad over which these tours are routed (except as pertains to its responsibility as a common carrier) shall be or become liable or responsible in any way in connection with said vehicles or transportation or any other services whatsoever or for any loss, injury or damage to, or in respect of, any person or property howsoever caused or arising.

Reservations

Partial payment of \$3.00 insures reservation which can be made through your local Tourist Agent or railroad ticket office or American Express Office. Final payment to be made one week prior to departure. It is to your advantage to make your reservation early. You risk nothing, for in the event you are obliged to cancel your Tour, any payments advanced will be promptly refunded in full.

W. E. RUDOLPH, D. P. A.
WABASH TRAVEL BUREAU
GRAND TRUNK RAILWAY SYSTEM,
1450 Railway Exchange Building,
CANADIAN NATIONAL RAILWAYS,
ST. LOUIS, MO.
314 N. Broadway, ST. LOUIS, MO.
Chestnut 4700

1939

CIRCLE TOUR
ALL EXPENSE
WITH ESCORT

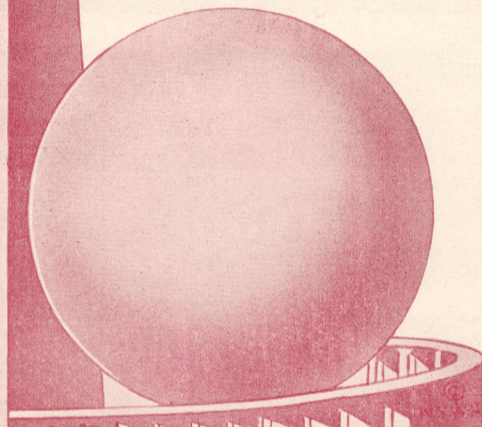
EIGHT DAYS

\$69.90

Includes

- **TORONTO**
- **LAKE ONTARIO**
- **NIAGARA FALLS**
- **NEW YORK**
- **WORLDS FAIR**
- **WASHINGTON**

Departure Every
Saturday Evening



WABASH RAILWAY &
AMERICAN EXPRESS
TRAVEL SERVICE

America's Foremost Travel Organization

N
E
W
Y
O
R
K
W
O
R
L
D
'
S
F
A
I
R

The American Express Co.

invites you to the

World's Fair

A REMARKABLE SERVICE . . .

The American Express Co. has had unequalled experience in serving the requirements of World's Fair Travelers.

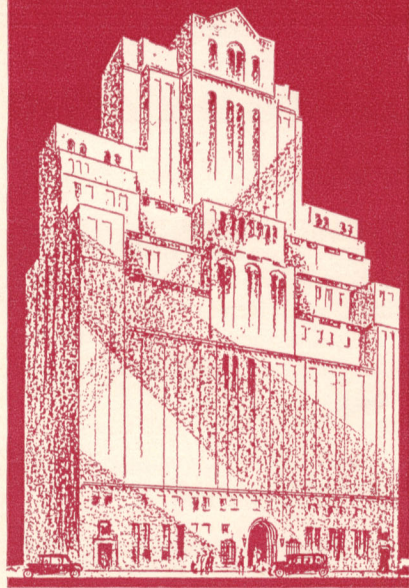
Here's your assurance of complete American Express service at the New York World's Fair.

- RESPONSIBILITY — DEPENDABILITY
- A PERSONAL ESCORT WITH EACH TOUR
- HIGHLY TRAINED AND EXPERIENCED STAFF OF UNIFORMED REPRESENTATIVES TO ASSIST YOU AT ALL RAIL TERMINALS, STEAMSHIP DOCKS, AND PRINCIPAL HOTELS.
- NINE OFFICES IN NEW YORK CITY AND ONE AT THE WORLD'S FAIR GROUNDS
- HOTEL ACCOMMODATIONS ASSURED.

300,000 WORLD'S FAIR TRAVELERS!

The American Express Co. is the only organization which has rendered complete services at the major Exposition Cities in this country. The benefit of years of experience in this highly-specialized field is obtainable through no other travel company.

At Chicago's Century of Progress, the Dallas and San Diego Expositions the American Express efficiently served upwards of 300,000 passengers—a feat unequalled by any other travel organization!

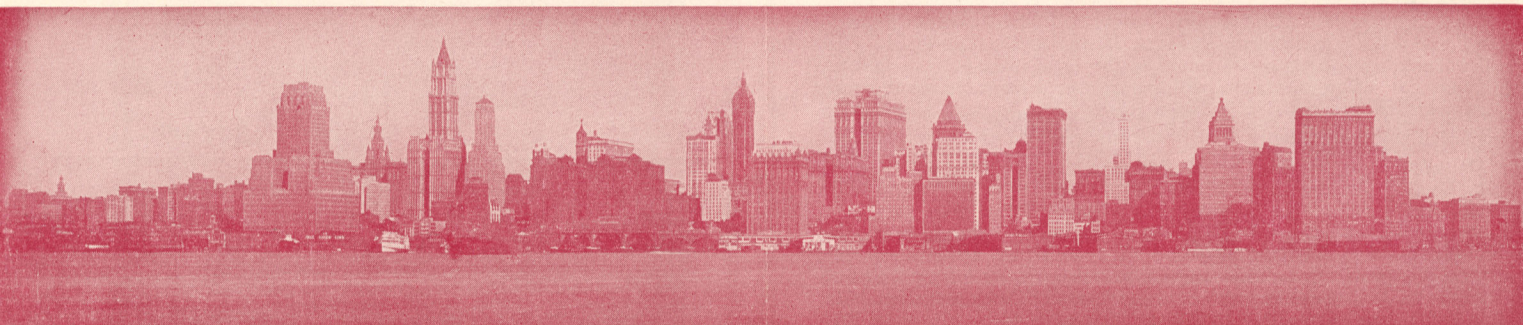


The Warwick — New York

THINK OF IT! Eight Fun-Filled days including every necessary expense for only \$69.90. (Meals in New York excluded.) Our tours are especially arranged to offer the utmost of comfort and ease in travel at an unbelievably low cost. Modern air-conditioned trains—among the Nation's best—are used throughout. Your hotel accommodations are first class . . . all rooms with private bath.

THE WARWICK has long been distinguished for its brilliant and glamorous atmosphere. It is favored by the celebrities of stage and screen, the press, the arts, the realm of sports.

The American Express Co. uses nothing but the finest hotels and we have not tried to meet any price competition and room you in inferior hotels. All rooms are based on two persons only in a room with private bath!



Skyline of Downtown District, New York