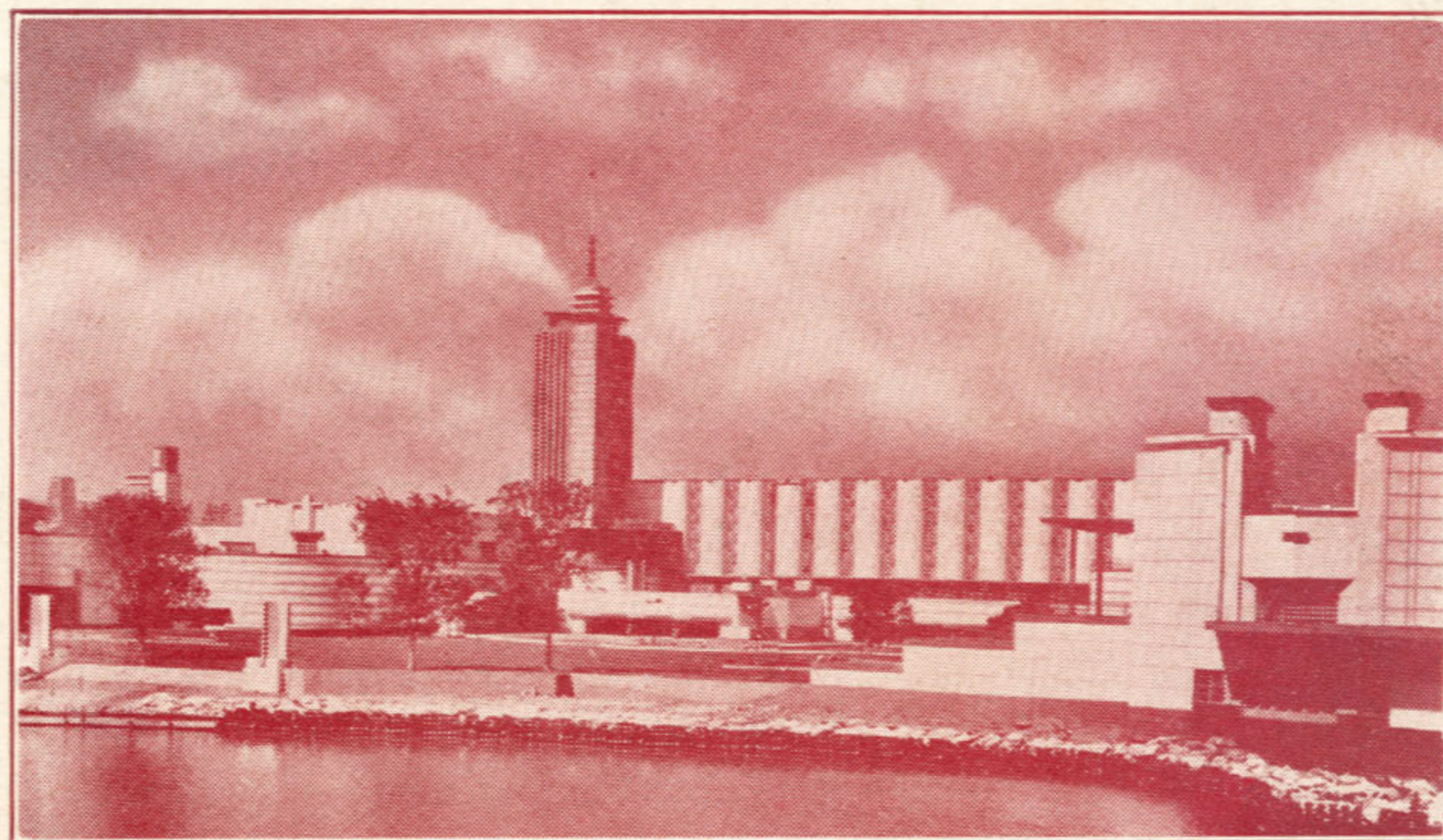

1934
De Luxe All-Expense
WORLD'S FAIR TOURS
To
CHICAGO

Personally Conducted by CAPT. C. H. DILL



The Hall of Science of a Century of Progress

SIX DAYS · \$47.00

◀ **NO NIGHT TRAVEL** ▶

Leave READING	- - -	July 9th
“ “	- - -	July 30th
“ “	- -	August 20th
“ “	-	September 17th

via

READING COMPANY

and PENNSYLVANIA RAILROAD

Arranged by the

C. H. DILL TRAVEL BUREAU
515 Penn Square Reading, Pa.

C. H. DILL TRAVEL BUREAU
515 Penn St.
Reading, Pa.

I hereby make application for..... memberships in your World's Fair Tour leaving on Monday..... and enclose five dollars per person as deposit on..... memberships. I understand that the balance, \$42.00 per person, is to be paid on or before Monday, one week prior to departure. It is understood that the return of any money paid releases the directors of any responsibility.

Name

Street

Town

Am interested in your World's Fair tours of Six days duration scheduled to leave on
July 9th JULY 30th AUGUST 20th SEPTEMBER 17th

Mark x in space of date interested.

ITINERARY OF SPECIAL TRAIN TOURS TO THE WORLD'S FAIR AT CHICAGO

Personally Conducted by **CAPT. C. H. DILL**

The itinerary will be the same for all four tours starting from the Main Station of THE READING COMPANY on MONDAYS 6.00 A.M. (Eastern Standard Time).

JULY 9th, JULY 30th, AUGUST 20th, SEPT. 17th

ending on the following SATURDAYS at 11 P.M. Train and Bus connections with POTTSVILLE, POTTSTOWN, HAMBURG and KUTZTOWN are provided for but not included in the rate. Stops are made at all stations between READING and HARRISBURG.

MONDAYS

	E. St. T.
Lv. Reading (The Reading Company).....	6.00 A.M.
Lv. Lebanon	6.57 A.M.
Lv. Harrisburg (Pennsylvania Railroad)	8.15 A.M.
	C. St. T.
Arr. Chicago	10.00 P.M.

Transfer to the ST. CLAIR HOTEL

TUESDAYS

After breakfast we are taken by special busses to the FAIR GROUNDS. World's Fair Wonder Tour of the Exposition Grounds with lecturers and guides, making short visits to the most important buildings.

WEDNESDAYS

Visit of the Exposition and the PLANETARIUM.

THURSDAYS

Complete CIRCLE TOUR of CHICAGO CITY AND PARKS, tour terminating at the Fair Grounds. Visit of FIELD MUSEUM and SHEDD AQUARIUM.

FRIDAYS

Suggest visit of ART EXHIBITION, MARSHALL FIELDS DEPARTMENT STORE. Arrangements can be made for visit of STOCKYARDS; CHICAGO BY NIGHT and LAKE trips.

SATURDAY

	C. St. T.
Lv. Chicago	6.00 A.M.
	E. St. T.
Arr. Harrisburg	9.30 P.M.
Arr. Reading	10.55 P.M.

THE PRICE \$47.00 Includes

Round-trip transportation on special trains, fastest schedule between Reading and Chicago. **NO NIGHT TRAVEL.**

Luncheon and dinner in dining car on going trip. Breakfast luncheon and dinner in dining car on return trip.

Hotel lodging and breakfast, two to a room, with private bath. Twin beds or single rooms at small additional charge.

Three admissions to the fair with two concessions (five selections.)

Transfer from station to hotel and vice versa.

Transportation from hotel to Fair grounds on two days.

CIRCLE TOUR OF FAIR GROUNDS WITH GUIDES

Circle tour of City, Beaches and Parks, also visit of Field Museum, Shedd Aquarium and Planetarium.

Membership in these tours is limited to the number of reservations we hold at the ST. CLAIR HOTEL.

To be assured of your reservation, sign the attached application at once, selecting your date, and mail with FIVE DOLLARS to the

C. H. DILL TRAVEL BUREAU

515 Penn St.

Bell 2-4661

Reading, Pa.



CAPT. DILL'S SPECIAL TRAIN

to the

CENTURY OF PROGRESS EXPOSITION

at CHICAGO, ILL.

July 9th • July 30th • August 20th
September 17th

VIA THE READING COMPANY

and PENNSYLVANIA RAILROAD