

... *Tours while in Chicago*

### 2-DAY TOUR

Includes in Chicago:

1. One Yellow Cab transfer from railroad station to hotel.
2. One night's lodging at hotel.
3. One souvenir admission ticket to World's Fair, including Fort Dearborn replica.
4. One additional general admission ticket to World's Fair.
5. One Gray Line motor coach Complete Sightseeing Tour of Chicago.
6. One Yellow Cab transfer from hotel to railroad station.

THE PRICES (per person) quoted below, varying with hotel accommodation selected, include all items specified above.

Hotels	Single Room with Bath	Double Room with Bath
Group "A"...	\$9.50	\$8.50
Group "B"...	9.00	8.00
Group "C"...	8.75	7.75
	With-out Bath	With-out Bath
Group "D"...	\$7.50	\$7.00

Consult Pennsylvania Railroad ticket agents or representatives about purchase of all-expense tours while in Chicago, tickets for which will be sold in connection with special excursion tickets to Chicago shown on first page of this folder. Rates shown do not include meals.

### 4-DAY TOUR

Includes in Chicago:

1. One Yellow Cab transfer from railroad station to hotel.
2. Three nights' lodging at hotel.
3. One souvenir admission ticket to World's Fair, including Fort Dearborn replica.
4. Two additional admission tickets to World's Fair.
5. One Gray Line motor coach Complete sightseeing Tour of Chicago.
6. One Yellow Cab transfer from hotel to railroad station.

THE PRICES (per person) quoted below, varying with hotel accommodation selected, include all items specified above.

Hotels	Single Room with Bath	Double Room with Bath
Group "A"...	\$18.75	\$15.75
Group "B"...	17.25	14.25
Group "C"...	16.00	13.50
	With-out Bath	With-out Bath
Group "D"...	\$12.75	\$11.25

Also... 1, 3, and 5 DAY TOURS at equally reasonable rates

## Pennsylvania Railroad Representatives

WASHINGTON, D. C.—ALAN B. SMITH, General Passenger Agent, Pennsylvania Building, 613 14th Street, N. W.

NORFOLK, VA.—RANDOLPH B. COOKE, General Passenger Agent, Royster Building, Granby Street and City Hall Avenue.

BALTIMORE, MD.—IRA B. YEAKLE, Division Passenger Agent, 950 Baltimore Trust Building.

WILMINGTON, DEL.—W. N. PIPPIN, Passenger Representative, Delaware Trust Building, 914 Market Street.

PHILADELPHIA, PA.—D. M. BECKER, Division Passenger Agent, 609 Broad Street Station.

HARRISBURG, PA.—N. S. LONGAKER, Division Passenger Agent, Pennsylvania Station.

ATLANTIC CITY, N. J.—J. S. MURPHY, Division Passenger Agent, 1303 Pacific Avenue.

NEWARK, N. J.—I. W. MacMULLIN, District Passenger Agent, Essex Building (Cor. Clinton and Beaver Streets).

NEW YORK, N. Y.—  
 { C. C. TRUEB, Assistant General Passenger Agent.  
 M. N. LUTHI, Division Passenger Agent, 390  
 Seventh Avenue, Pennsylvania Station.

F. McD. QUINN,  
 General Passenger Agent,  
 PHILADELPHIA, PA.

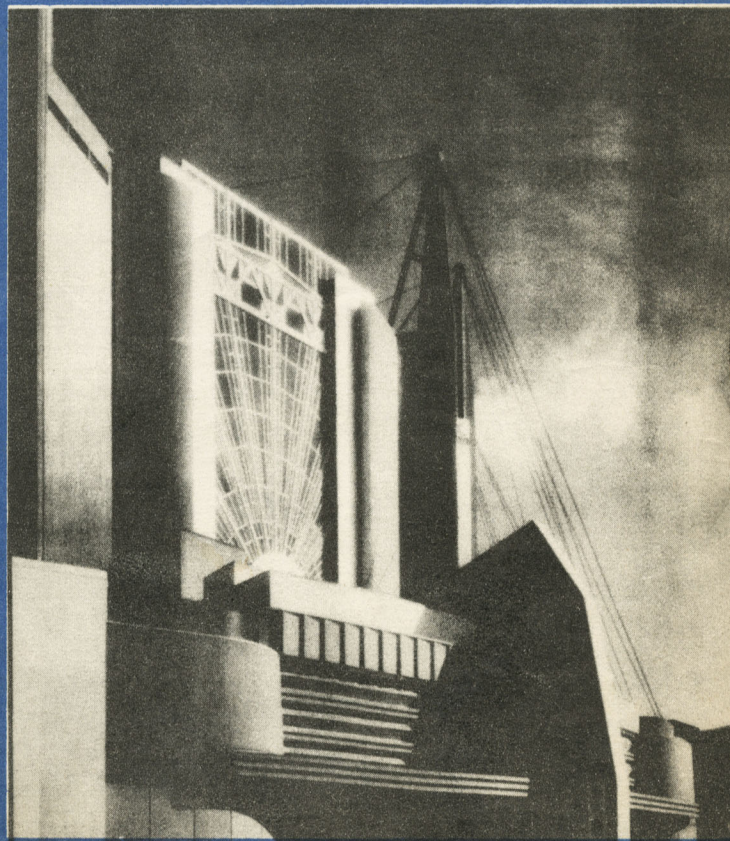
A. H. SHAW,  
 General Passenger Agent,  
 NEW YORK, N. Y.

# BARGAIN FARES & TOURS

A

# CENTURY OF PROGRESS Exposition

CHICAGO JUNE to NOV., 1933



# PENNSYLVANIA RAILROAD



# ALL-EXPENSE TOURS AT A MINIMUM COST

## WEEKLY

### 4, 5, 6, and 7 Day All-Expense Tours

Leaving May 25, 26 and 27 and thereafter  
Every Saturday, June 3, to October 28,

#### SATURDAY

(Subject to change)

Lv. New York, Penna. Station, N. Y. . . . . E. T. 11.00 A. M.  
"The Fort Dearborn"  
Lv. Philadelphia, Broad Street Station, Pa. . . . . 1.10 P. M.  
Lv. Washington, D. C. . . . . 12.00 Noon  
Lv. Baltimore, Md. . . . . 12.56 P. M.  
Lv. Harrisburg, Pa. . . . . 3.32 P. M.

#### SUNDAY

Ar. Chicago, Union Station, Ill. . . . . C. T. 7.00 A. M.

#### FEATURES IN CHICAGO

Yellow cab transfer station to hotel and return.  
Souvenir admission ticket to World's Fair, including Fort Dearborn replica.  
Gray Line motor coach complete sightseeing tour of Chicago.  
Lodging at hotel and additional admissions to Exposition as follows:

4-Day Tour—1 night, 1 admission  
5-Day Tour—2 nights, 2 admissions  
6-Day Tour—3 nights, 2 admissions  
7-Day Tour—4 nights, 2 admissions

#### RETURNING

MONDAY, TUESDAY, WEDNESDAY OR THURSDAY  
Lv. Chicago, Union Station, Ill. . . . . C. T. 9.00 P. M.  
"The Gotham Limited"

TUESDAY, WEDNESDAY, THURSDAY OR FRIDAY  
Ar. Harrisburg, Pa. . . . . E. T. 2.28 P. M.  
Ar. Baltimore, Md. . . . . 5.37 P. M.  
Ar. Washington, D. C. . . . . 6.40 P. M.  
Ar. North Philadelphia, Pa. . . . . 4.46 P. M.  
Ar. New York, Pennsylvania Station, N. Y. . . . . 6.30 P. M.

ALL-EXPENSE RATES including round trip transportation, Pullman accommodations, transfers, hotel lodging, two to a room without bath, sightseeing and admissions, as follows:

		Lower Berth 2 Persons (each)	1 Person	Upper Berth 1 Person
New York, N. Y.,	4 Day Tour . . .	\$46.75	\$53.50	\$50.80
	5 Day Tour . . .	49.25	56.00	53.30
	6 Day Tour . . .	51.00	57.75	55.05
	7 Day Tour . . .	52.50	59.25	56.55
Philadelphia, Pa.,	4 Day Tour . . .	42.95	49.15	46.65
	5 Day Tour . . .	45.45	51.65	49.15
	6 Day Tour . . .	47.20	53.40	50.90
	7 Day Tour . . .	48.70	54.90	52.40
Washington, D. C.,	4 Day Tour . . .	41.20	47.40	44.90
	5 Day Tour . . .	43.70	49.90	47.40
	6 Day Tour . . .	45.45	51.65	49.15
	7 Day Tour . . .	46.95	53.15	50.65
Baltimore, Md.,	4 Day Tour . . .	41.20	47.40	44.90
	5 Day Tour . . .	43.70	49.90	47.40
	6 Day Tour . . .	45.45	51.65	49.15
	7 Day Tour . . .	46.95	53.15	50.65
Harrisburg, Pa.,	4 Day Tour . . .	38.65	44.25	42.00
	5 Day Tour . . .	41.15	46.75	44.50
	6 Day Tour . . .	42.90	48.50	46.25
	7 Day Tour . . .	44.40	50.00	47.75

Proportionate rates from other stations.  
Meals not included, thus permitting you to eat when and where desired at economical prices.  
For superior hotel or Pullman accommodations slight additional charge will apply.



Flanking the upper left wall of the Electrical Building, a gigantic sculptured plaque entitled "Light" symbolizes the amazing development of this branch of electricity.

### A Hundred Years of Progress

On the shores of Lake Michigan has risen a new city—an ideal city of steel and glass and concrete. Chicago has erected it to celebrate a hundred years of progress.

The Century of Progress is more than a World's Fair—it is a summary of the progress of a great nation during the last one hundred years, and a forecast of the future growth of that nation.

Architects, engineers and builders have set a gorgeous and interesting stage for this pageant—visitors to Chicago this summer will have the privilege of seeing it and enjoying its wonders to the fullest.

### A Splendid Fleet of Trains

The Pennsylvania's splendid fleet of flyers between New York and Chicago . . . led by the Broadway Limited—17¾ hours between these cities—affords flexibility of movement, with departure and arrival hours to suit the needs of business and pleasure. The Pennsylvania Railroad is the shortest route by miles between New York and Chicago. Its superlative services, combined with the attractive round trip fares and well-planned all-expense tours shown in this leaflet, make a trip to Chicago to see the World's Fair your trip of the summer.

## COMBINATION RAIL AND GREAT LAKES CRUISES

Leaving Every Monday, July 3 to August 28

### TOUR GL

#### MONDAY

(Subject to change)

#### PENNSYLVANIA RAILROAD

Lv. New York, Penna. Station, N. Y. . . . . E. T. 11.00 A. M.  
"The Fort Dearborn"

Lv. Philadelphia, Broad Street Station, Pa. . . . . 1.10 P. M.  
Lv. Washington, D. C. . . . . 12.00 Noon  
Lv. Baltimore, Md. . . . . 12.56 P. M.  
Lv. Harrisburg, Pa. . . . . 3.32 P. M.  
Dinner in Dining Car

#### TUESDAY

Ar. Chicago, Union Station, Ill. . . . . C. T. 7.00 A. M.

Transfer of passengers and hand baggage to hotel.  
Breakfast at The Stevens Hotel.

Motor sightseeing trip of Chicago including Loop and World's Famous Parks and Boulevards, following Shoreline of Lake Michigan along both the South and North Shores. Visit Century of Progress Exposition, with Luncheon, World's Fair Wonder Tour of the Exposition Grounds by motor sightseeing car accompanied by lecturer and transfer to hotel.

Dinner at individual expense. Lodging at The Stevens Hotel, two to a room with bath.

#### WEDNESDAY

Breakfast at hotel. Visit Century of Progress Exposition. Luncheon on Exposition Grounds at individual expense. Dinner at The Stevens Hotel. Transfer of passengers and hand baggage hotel to steamer wharf, leaving hotel 10.00 P. M.

GREAT LAKES TRANSIT CORPORATION  
Lv. Chicago, Navy Pier, Ill. . . . . C. T. 11.00 P. M.  
Berth in stateroom on steamer.

THURSDAY, FRIDAY AND SATURDAY  
En Route on Great Lakes with all meals on steamer and sightseeing trip at Detroit.

#### SUNDAY

Breakfast on steamer  
Ar. Buffalo, N. Y. . . . . E. T. 8.30 A. M.

Transfer of passengers and hand baggage steamer wharf to station.  
Passengers may stop over at Buffalo if desired for trip to Niagara Falls at individual expense.

#### PENNSYLVANIA RAILROAD

Lv. Buffalo, Central Terminal, N. Y. . . . . E. T. 9.10 A. M.  
Seat in Parlor Car.  
Luncheon in Dining Car.

Ar. Harrisburg, Pa. . . . . 4.44 P. M.  
Dinner in Dining Car.

Ar. Baltimore, Md. . . . . 7.18 P. M.  
Ar. Washington, D. C. . . . . 8.20 P. M.  
Ar. Philadelphia, Broad Street Station, Pa. . . . . 7.27 P. M.  
Ar. New York, Pennsylvania Station, N. Y. . . . . 9.55 P. M.

ALL-INCLUSIVE Lower Berth Two Persons (each) \$88.50

Lower Berth One Person \$93.50

Upper Berth One Person \$91.50

Philadelphia, Pa. . . . . 84.00

Washington, D. C. . . . . 82.00

Baltimore, Md. . . . . 82.00

Harrisburg, Pa. . . . . 77.00

Lower Berth Two Persons (each) \$88.50

Lower Berth One Person \$93.50

Upper Berth One Person \$91.50

Philadelphia, Pa. . . . . 84.00

Washington, D. C. . . . . 82.00

Baltimore, Md. . . . . 82.00

Harrisburg, Pa. . . . . 77.00

### TOUR DC

#### MONDAY

(Subject to change)

#### PENNSYLVANIA RAILROAD

Lv. New York, Penna. Station, N. Y. . . . . E. T. 3.40 P. M.  
"The Red Arrow"

Lv. North Philadelphia, Pa. . . . . 5.20 P. M.

Lv. Washington, D. C. . . . . 4.05 P. M.

Lv. Baltimore, Md. . . . . 4.58 P. M.  
Dinner in Dining Car.

Lv. Harrisburg, Pa. . . . . 7.48 P. M.

#### TUESDAY

Breakfast in Dining Car  
Ar. Detroit, Mich. . . . . E. T. 8.25 A. M.

Sightseeing trip of Detroit ending at Steamer Wharf.

DETROIT & CLEVELAND NAVIGATION COMPANY  
Lv. Detroit, Third Street Wharf, Mich. . . . . E. T. 1.30 P. M.

Luncheon, Dinner and berth in stateroom on steamer.

#### WEDNESDAY

En Route on Great Lakes. Meals on steamer.  
Stop will be made at Mackinac Island from 8.00 A. M. to 11.30 A. M.

#### THURSDAY

Breakfast on steamer  
Ar. Chicago, Navy Pier, Ill. . . . . C. T. 7.30 A. M.

Transfer of passengers and hand baggage steamer wharf to The Stevens Hotel. Motor sightseeing trip of Chicago including Loop and World's Famous Parks and Boulevards, following Shoreline of Lake Michigan along both the South and North Shores. Visit Century of Progress Exposition, with Luncheon, World's Fair Wonder Tour of the Exposition Grounds by motor sightseeing car accompanied by lecturer and transfer to hotel. Dinner at individual expense. Lodging at The Stevens Hotel, two to a room with bath.

#### FRIDAY

Breakfast at hotel. Visit Century of Progress Exposition. Luncheon on Exposition Grounds at individual expense. Dinner at The Stevens Hotel. Transfer of passengers and hand baggage hotel to station, leaving hotel 8.30 P. M.

#### PENNSYLVANIA RAILROAD

Lv. Chicago, Union Station, Ill. . . . . C. T. 9.00 P. M.  
"The Gotham Limited"

#### SATURDAY

Breakfast and Luncheon in Dining Car  
Ar. Harrisburg, Pa. . . . . E. T. 2.28 P. M.

Ar. Baltimore, Md. . . . . 5.37 P. M.

Ar. Washington, D. C. . . . . 6.40 P. M.

Ar. North Philadelphia, Pa. . . . . 4.46 P. M.

Ar. New York, Pennsylvania Station, N. Y. . . . . 6.30 P. M.

ALL-INCLUSIVE Lower Berth Two Persons (each) \$86.50

Lower Berth One Person \$95.00

Upper Berth One Person \$91.50

Philadelphia, Pa. . . . . 82.00

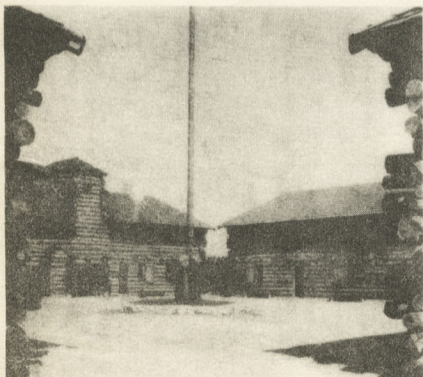
Washington, D. C. . . . . 80.25

Baltimore, Md. . . . . 80.25

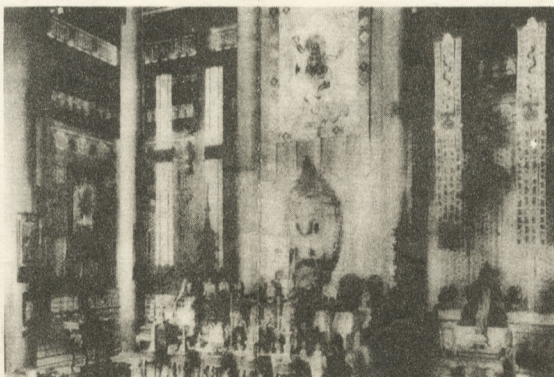
Harrisburg, Pa. . . . . 75.75

### Proportionate Rates From Other Stations

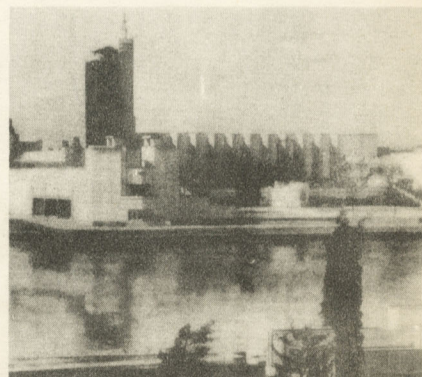
The above rates cover round trip railroad fare; Pullman accommodations as indicated; stateroom accommodations on steamer; necessary hotel accommodations (two persons occupying a room, with bath); meals as designated; transfers of passenger and baggage as shown; sight-seeing trips and admissions to the Exposition at Chicago. For single room at hotel additional charge of \$1.00 will apply. Slight additional charge for superior Pullman, hotel and steamer accommodations.



Old Fort Dearborn



Golden Temple of Jehol



General Exhibits Building

# SEE THESE MANY DIFFERENT ALL-EXPENSE TOURS TO CHICAGO AND WHILE IN CHICAGO



# ROUND TRIP BARGAIN

## *Excursion Fares*

### TO THE EXPOSITION

Going and Returning Same Route	* On Sale Tuesdays and Saturdays		On Sale Daily	* On Sale Saturdays
	Limit 30-Day	Limit 16-Day	Limit 15-Day	Limit 10-Day
Altoona, Pa. . . . .	\$31.50	\$28.00	\$23.10	\$21.25
Asbury Park—				
Ocean Grove, N. J. . . . .	49.00	43.55	35.95	32.95
Atlantic City, N. J. . . . .	47.30	42.05	34.70	31.80
Baltimore, Md. . . . .	41.70	37.05	30.60	28.00
Bellefonte, Pa. . . . .	34.10	30.35	25.05	23.00
Cape May, N. J. . . . .	48.55	43.15	35.60	32.65
Carlisle, Pa. . . . .	39.60	35.20	29.05	26.65
Chester, Pa. . . . .	44.20	39.30	32.45	29.75
Columbia, Pa. . . . .	41.20	36.60	30.20	27.70
Cumberland, Md. . . . .	33.45	29.75	24.55	22.55
Delmar, Del. . . . .	44.20	39.30	33.90	31.05
Elizabeth, N. J. . . . .	48.40	43.00	35.50	32.50
Elmira, N. Y. . . . .	36.55	32.50	26.80	24.65
Hagerstown, Md. . . . .	41.40	36.80	30.35	27.85
Harrisburg, Pa. . . . .	38.60	34.30	28.30	26.00
Hempstead, N. Y. . . . .	50.25	44.65	36.85	33.75
Huntingdon, Pa. . . . .	33.35	29.65	24.45	22.50
Jamaica, N. Y. . . . .	49.75	44.20	36.50	33.40
Lancaster, Pa. . . . .	40.55	36.05	29.75	27.30
Lewistown, Pa. . . . .	35.30	31.40	25.90	23.80
Lock Haven, Pa. . . . .	35.25	31.30	25.85	23.75
Long Beach, N. Y. . . . .	50.40	44.80	37.00	33.85
Martinsburg, W. Va. . . . .	42.45	37.75	31.15	28.55
Mt. Carmel, Pa. . . . .	39.45	35.10	28.95	26.55
Newark, N. J. . . . .	48.60	43.20	35.65	32.65
New York, N. Y. . . . .	49.05	43.60	36.00	33.00
Norfolk, Va. . . . .	44.20	39.30	.....	31.05
Norristown, Pa. . . . .	44.20	39.30	32.45	29.75
Ocean City, N. J. . . . .	47.80	42.50	35.05	32.15
Oyster Bay, N. Y. . . . .	50.95	45.30	37.40	34.25
Philadelphia, Pa. . . . .	44.20	39.30	32.45	29.75
Phillipsburg, N. J. . . . .	46.00	40.90	33.75	30.95
Phoenixville, Pa. . . . .	44.20	39.30	32.45	29.75
Port Washington, N. Y. . . . .	50.15	44.60	36.80	33.70
Pottstown, Pa. . . . .	44.20	39.30	32.45	29.75
Pottsville, Pa. . . . .	46.10	41.00	33.80	31.00
Reading, Pa. . . . .	44.20	39.30	32.45	29.75
Shamokin, Pa. . . . .	39.00	34.70	28.60	26.25
Southampton, N. Y. . . . .	54.05	48.05	39.65	36.30
Sunbury, Pa. . . . .	38.00	33.80	27.90	25.60
Trenton, N. J. . . . .	46.00	40.90	33.75	30.95
Tyrone, Pa. . . . .	32.30	28.70	23.70	21.80
Washington, D. C. . . . .	41.70	37.05	30.60	28.00
Wildwood, N. J. . . . .	48.40	43.05	35.50	32.55
Wilkes-Barre, Pa. . . . .	41.45	36.85	30.40	27.90
Williamsport, Pa. . . . .	36.55	32.50	26.80	24.65
Wilmington, Del. . . . .	44.20	39.30	32.45	29.75
Winchester, Va. . . . .	43.65	38.80	32.00	29.35
York, Pa. . . . .	40.05	35.60	29.40	26.95

(Bargain Pullman rates in connection with 10 day tickets—see Note.)

**30-Day and 16-Day Tickets** are on sale May 25, 26 and 27 and thereafter on Tuesdays and Saturdays of each week, May 30 to October 28. Stop-over, on notice to conductor, will be permitted on going trip at Washington, D. C.; on return trip stop-over is permitted at any point en route, within final return limit. Tickets good in Pullman cars upon payment of regular Pullman charges.

**15-Day Tickets** (good in coaches only) are on sale daily, May 25 to October 29. Stop-over, on notice to conductor, will be permitted at any point en route on either going or return trip, or both, within final return limit.

**10-Day Tickets** are on sale May 25, 26 and 27 and thereafter on Saturdays only, June 3 to October 28. Stop-over, on notice to conductor, will be permitted on return trip only at any point en route, within final return limit.

**Note.—Tickets good in coaches and Pullman cars—A 25% reduction applying for round-trip Pullman tickets.**

**All-Expense Tours While in Chicago** covering 1, 2, 3, 4 and 5 days, as per examples shown on last page, are available to purchasers of tickets at fares named on this page.

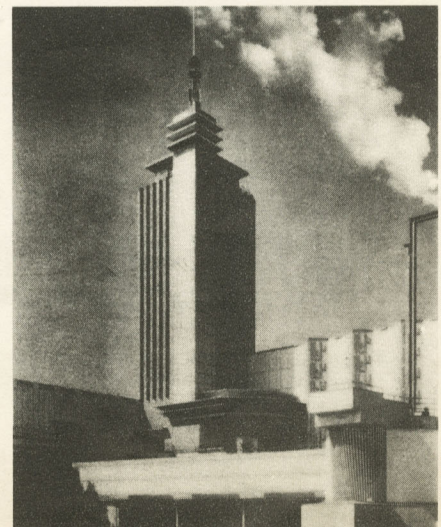
**Fares For Diverse Route Tickets**—Going one route and returning another route, will be furnished upon request.

**Validation**—Tickets must be validated at Chicago before they will be accepted for return passage.

**Optional Route**—Tickets via Pennsylvania Railroad and Pittsburgh from Philadelphia and points north and east thereof will be honored without additional cost via Washington, D. C., or Baltimore, Md., in one or both directions.

**Fares for Special Parties**—Ask about special reduced fares for parties of 25 or more persons traveling together via same route going and returning, and limited to nine, sixteen or thirty days.

*Carillon Bell  
Tower  
Crowning  
Touch  
of the  
Beautiful  
Hall  
of  
Science*



Proportionate Fares From Other Stations

\*Additional selling dates May 25, 26 and 27.