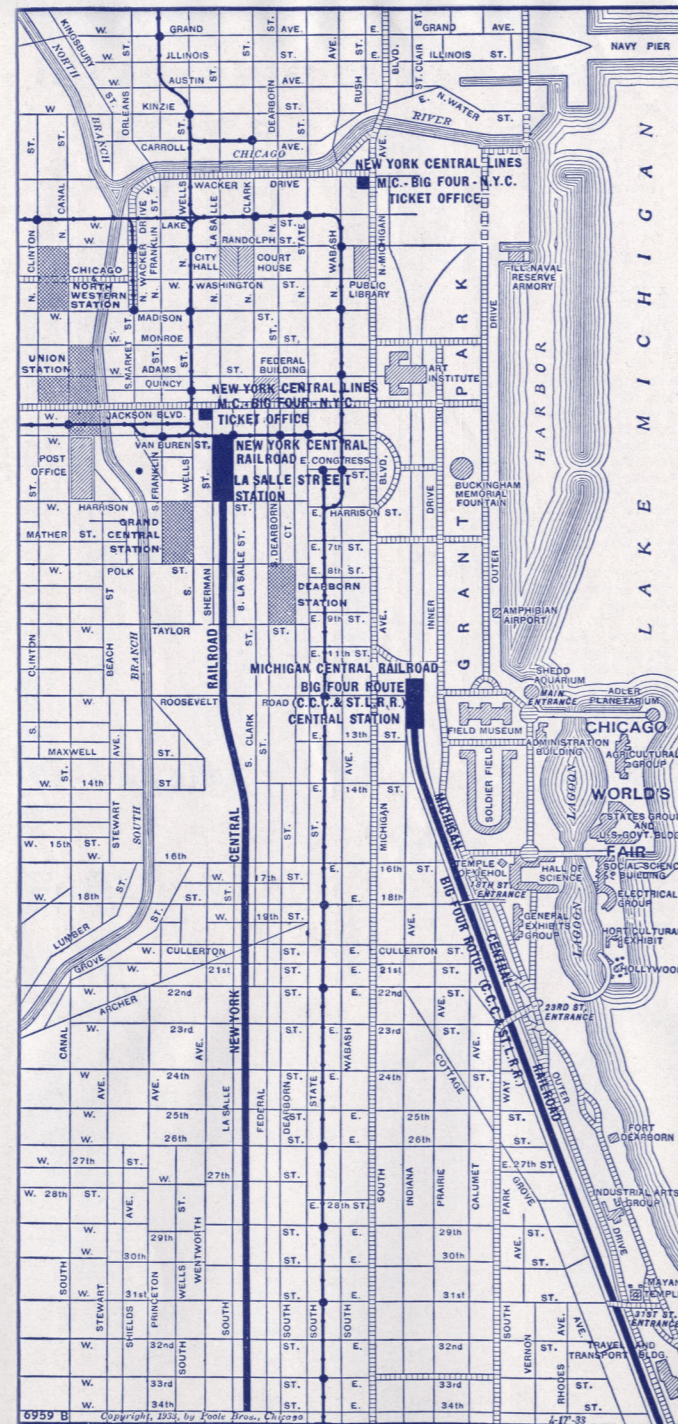


THE CHICAGO TERMINALS

OF THE

# NEW YORK CENTRAL LINES

ARE VERY ADVANTAGEOUSLY LOCATED FOR VISITORS TO THE WORLD'S FAIR . .



## LA SALLE STREET STATION TERMINAL OF THE NEW YORK CENTRAL RAILROAD

Located at La Salle and Van Buren Streets in the very heart of Chicago is only a few minutes cross town to the World's Fair. Taxi service direct from the station. Also motor bus service—Route 26—on Jackson Boulevard one block north. Fare 10c.

## CENTRAL STATION TERMINAL OF THE MICHIGAN CENTRAL RAILROAD BIG FOUR ROUTE

This terminal, located at Roosevelt Road and Michigan Avenue, is the closest terminal to the north entrance of the Exposition at Roosevelt Road. It is only five to ten minutes' walk and but a few minutes by taxi. Illinois Central Electric from Central Station direct to all other gates. Trains every few minutes; only 3 minutes to 23rd Street (Center of Fair). Fare 10c one way; 20c round trip to every gate.

FOR 400,000 DAILY

The Hotels Listed Below are Members of The Chicago Association of Commerce and Chicago Hotel Association. If the provisions of the Code of Fair Competition for the Hotel Industry necessitates adjustments, the hotel rates quoted will be subject to modification.

Name of Hotel	Single with Bath	Double with Bath	Twin Beds with Bath	Break-fast	Lunch-eon	Dinner
ALCAZAR	\$2.00-\$2.50	\$ 3.50-\$4.50		50c up	65c up	75c up
ALLERTON	2.50-3.00	4.00-5.00	\$ 4.00-5.00	35c up	50c up	75c up
AMBASSADOR	2.50-5.00	4.00-6.00	5.00-8.00	40c up	50c up	\$1.00 up
ATLANTIC	3.00-4.00	4.00-4.50	5.00-6.00	35c up	85c up	1.00 up
AUDITORIUM	3.00-6.00	5.00-7.00	6.00-8.00	40c up	65c up	1.00 up
BELMONT	4.00-8.00	5.00-10.00	5.00-10.00	40c up	60c up	1.00 up
BISMARCK	3.50-6.00	5.00-8.00	6.00-10.00	50c up	65c up	90c up
BLACKSTONE	4.00 up	7.00 up	8.00 up	ala carte	1.00 up	1.75 up
BREVOORT	3.00	4.00-5.00	4.50-6.00	20c up	35c up	50c up
BROADVIEW	3.00	5.00-6.00	6.00	30c up	50c up	65c up
CASS	2.00	3.00	4.00	25c up	40c up	60c up
COMMON-WEALTH	2.00-2.50	4.00-6.00	4.00-6.00	30c up	50c up	50c up
CONGRESS	3.50-8.00	5.00-10.00	6.00-12.00	60c up	75c up	1.50 up
CRILLON	2.50-3.00	4.50-5.00	6.00	40c up	50c up	75c up
CROYDON	21.00 wk. up	28.00 wk. up	35.00 wk.	25c up	35c up	65c up
DEL PRADO	3.00-5.00	5.00-8.00	5.00-10.00	40c up	60c up	1.00 up
DRAKE	3.50 up	5.00 up	6.00 up	35c up	50c up	1.00 up
EASTGATE	3.00-4.00	4.50-5.00	5.00-6.00	30c up	40c up	75c up
EDGEWATER						
BEACH FAIRFAX	4.00-6.00	5.00-7.00	5.00-7.00	25c up	45c up	75c up
DEARBORN	3.50	5.00	6.00	35c up	60c up	1.00 up
FORT GEORGIAN	2.50	3.50	5.00	25c up	25c up	50c up
GRAEMERE	3.50	5.00	5.00	50c up	50c up	85c up
GT. NORTHERN	2.50-4.00	4.50-6.00	5.50-6.00	25c up	40c up	75c up
HARDING J. P.	3.00-4.00	4.50-6.00	6.00-7.00	35c up	50c up	85c up
HARRISON	2.50	4.00	4.00	20c up	35c up	85c up
HYDE PARK	3.00	4.00-4.50	5.50	35c up	35c up	65c up
KNICKER-BOCKER	2.50-3.50	3.50-4.50	3.50-5.00	20c up	25c up	40c up
LAKE SHORE DRIVE	3.00-5.00	5.00-7.00	6.00-8.00	50c up	60c up	1.00 up
LA SALLE	4.00	6.00	7.00			
LEXINGTON	3.00	4.50	6.00	35c up	55c up	85c up
MAJESTIC	3.00	5.00	5.00-6.00	15c up	30c up	40c up
MARYLAND	2.50-3.50	3.50-4.50	4.00			
MAYFLOWER	2.50	4.00	4.50	40c up	50c up	75c up
MORAIN	2.50 up	3.50 up	4.00 up	30c up	40c up	55c up
MORRISON	3.00 up	5.00 up	5.00 up	45c up	65c up	1.00 up
PALMER HSE.	3.00	4.50	6.00	35c up	40c up	75c up
PARK LANE	3.50 up	6.00 up	6.00 up	40c up	35c up	90c up
PARKSIDE	2.50-3.00	4.00-4.50	5.00-6.00	25c up	50c up	75c up
PARKWAY	1.50	2.50	2.50	25c up	35c up	50c up
PEARSON	2.50 up	4.00 up	5.00 up	40c up	50c up	1.00 up
PICCADILLY	3.00 up	5.00 up	6.00 up	35c up	45c up	1.00 up
PLAZA	2.00-3.00	3.50-4.00	4.50-5.00	25c up	50c up	60c up
RIENZI	2.00 up	3.00 up	3.50	35c up	35c up	50c up
SENECA	3.00 up	4.00 up	5.00 up	35c up	50c up	75c up
SHERIDAN						
PLAZA SHERMAN	2.50	4.00	4.50	25c up	50c up	60c up
SHERRY	3.00-5.00	4.50-7.00	5.00-8.00	35c up	40c up	1.00 up
SHORELAND	3.50-5.00	4.00-6.00	4.00-6.00	40c up	60c up	1.00 up
SOUTHMOOR	4.00-6.00	6.00-7.00	7.00-8.00	45c up	75c up	1.10 up
SOVEREIGN	2.50-3.00	4.00-5.00	5.00-6.00	25c up	35c up	60c up
ST. CLAIR	3.00	4.00-5.00	5.00-6.00	40c up	50c up	75c up
ST. NICHOLAS	3.00	4.50 up	5.00 up	30c up	45c up	85c up
STEVENS	1.50	2.00	2.50	20c up	35c up	45c up
STOCK YARD INN	3.50-7.00	5.00-9.00	6.00-12.00	45c up	50c up	75c up
SURF	2.00-3.00	2.50 up	2.50-3.50	25c up	50c up	75c up
UNION PARK	3.00-4.00	4.50-5.00	5.00-6.00	20c up	50c up	75c up
VERSAILLES	2.00 up	2.50 up	3.50 up	20c up	35c up	50c up
VICTORIA	1.50	2.50	2.50	Kitchenette	\$2.50 Single	Double \$3.00
WACKER	2.50	4.00	4.00	25c up	35c up	45c up
WASHINGTON	2.00-3.50	3.50-6.00	4.00-6.00	25c up	35c up	45c up
WEBSTER	2.50-3.00	3.50-5.00	5.00-6.00	40c up	50c up	1.00 up
WINDERMERE	2.50 up	4.00 up	4.50-6.00	45c up	75c up	75c up

### RAILROAD FARES

The range of reduced fares from all points to Chicago and return during the World's Fair is so great that it would be impractical to enumerate all of them. Your nearest New York Central Lines' Ticket Agent will fill in the following, showing complete cost of the Tour selected, including transportation.

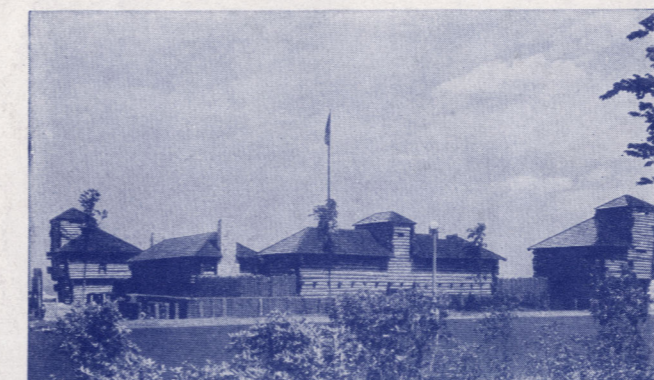
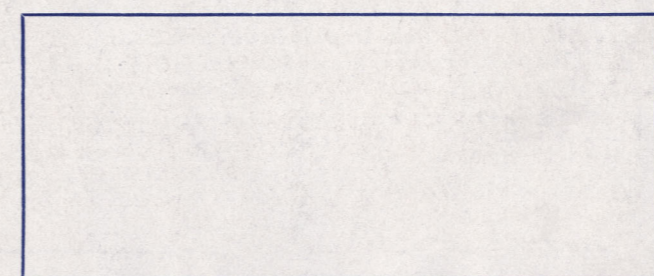
### COST OF TRIP PER PERSON

From..... Date.....  
 Tour No. .... \$.....  
 Railroad Fare ..... \$.....  
 Pullman Fare ..... \$.....  
 Total ..... \$.....

### SCHEDULE

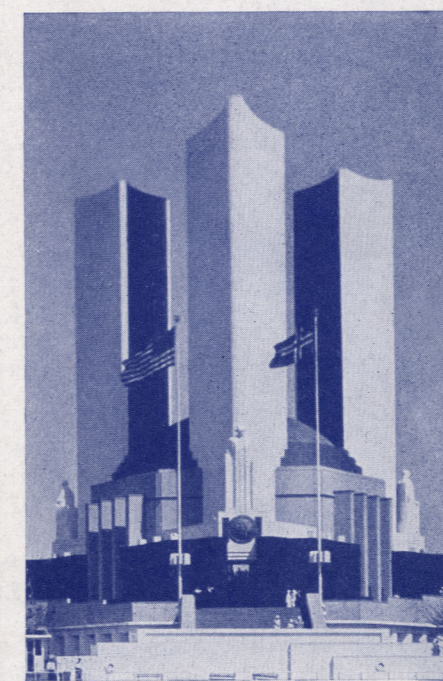
Lv..... Lv. Chicago.....  
 Ar. Chicago..... Ar.....

Or you may remain in Chicago at your own expense until ..... which is the return limit of your ticket.



# 1934

**DAILY** ALL EXPENSE TOURS  
**GO ANY DAY**  
 OVER THE  
**NEW YORK CENTRAL LINES**



TO THE WORLD'S FAIR



TRAVEL BY TRAIN

# CHICAGO

SO SUCCESSFUL were the New York Central Lines Tours to A Century of Progress last year that it has been decided to offer our patrons similar Tours this year in co-operation with the American Express Company. You may purchase, before you leave home, a ticket covering the complete cost of the trip, assuring you hotel accommodations and other services at a cost lower than obtainable if purchased individually. Any New York Central Lines Ticket Agent will be glad to discuss these Tours with you.

## TWO DAYS IN CHICAGO

### Tour 2F

**\$6.45 Per Person, Double Room with Bath**  
**\$7.45 Per Person, Single Room with Bath**

FIRST DAY SECOND DAY  
Transfer by Yellow Taxi Cab from Station to Hotel. Admission to Exposition. Souvenir Admission Ticket to Exposition. Transfer by Yellow Taxi Cab from Hotel to Station. Tour of Exposition Grounds. Lodging.

### Tour 2G

**\$9.65 Per Person, Double Room with Bath**  
**\$10.65 Per Person, Single Room with Bath**

FIRST DAY SECOND DAY  
Transfer by Yellow Taxi Cab from Station to Hotel. Breakfast at Hotel. Souvenir Admission Ticket to Exposition. Complete 50-Mile Sight-seeing Tour of Chicago Starting at Your Hotel and Terminating at Entrance to Exposition Grounds. Tour of Exposition Grounds. Admission to Exposition. Dinner. Transfer by Yellow Taxi Cab from Hotel to Station. Lodging.

## THREE DAYS IN CHICAGO

### Tour 3F

**\$9.60 Per Person, Double Room with Bath**  
**\$11.60 Per Person, Single Room with Bath**

FIRST DAY SECOND DAY  
Transfer by Yellow Taxi Cab from Station to Hotel. Admission to Exposition. Souvenir Admission Ticket to Exposition. Lodging. THIRD DAY  
Tour of Exposition Grounds. Admission to Exposition. Lodging. Transfer by Yellow Taxi Cab from Hotel to Station.

### Tour 3G

**\$15.40 Per Person, Double Room with Bath**  
**\$17.40 Per Person, Single Room with Bath**

FIRST DAY SECOND DAY  
Transfer by Yellow Taxi Cab from Station to Hotel. Breakfast at Hotel. Souvenir Admission Ticket to Exposition. Complete 50-Mile Sight-seeing Tour of Chicago Starting at Your Hotel and Terminating at Entrance to Exposition Grounds. Tour of Exposition Grounds. Admission to Exposition. Dinner. Lodging. Twilight Cruise on Lake Michigan.

### THIRD DAY

Breakfast at Hotel. Admission to Exposition. Transfer by Yellow Taxi Cab from Hotel to Station.

## FOUR DAYS IN CHICAGO

### Tour 4F

**\$12.85 Per Person, Double Room with Bath**  
**\$15.85 Per Person, Single Room with Bath**

FIRST DAY THIRD DAY  
Transfer by Yellow Taxi Cab from Station to Hotel. Admission to Exposition. Souvenir Admission Ticket to Exposition. Lodging. FOURTH DAY  
Tour of Exposition Grounds. Admission to Exposition. Transfer by Yellow Taxi Cab from Hotel to Station. Lodging. SECOND DAY  
Admission to Exposition. Lodging.

### Tour 4G

**\$20.10 Per Person, Double Room with Bath**  
**\$23.10 Per Person, Single Room with Bath**

FIRST DAY SECOND DAY  
Transfer by Yellow Taxi Cab from Station to Hotel. Breakfast at Hotel. Souvenir Admission Ticket to Exposition. Complete 50-Mile Sight-seeing Tour of Chicago Starting at Your Hotel and Terminating at Entrance to Exposition Grounds. Tour of Exposition Grounds. Admission to Exposition. Dinner. Lodging. Twilight Cruise on Lake Michigan.

### THIRD DAY

Breakfast at Hotel. Admission to Exposition. Dinner. Lodging. FOURTH DAY  
Breakfast at Hotel. Admission to Exposition. Transfer by Yellow Taxi Cab from Hotel to Station. Lodging.

## FIVE DAYS IN CHICAGO

### Tour 5F

**\$16.05 Per Person, Double Room with Bath**  
**\$20.05 Per Person, Single Room with Bath**

FIRST DAY SECOND DAY  
Transfer by Yellow Taxi Cab from Station to Hotel. Admission to Exposition. Souvenir Admission Ticket to Exposition. Lodging. THIRD DAY  
Tour of Exposition Grounds. Admission to Exposition. Lodging. FIFTH DAY  
Admission to Exposition. Transfer by Yellow Taxi Cab from Hotel to Station. Lodging. FOURTH DAY  
Admission to Exposition. Lodging.

### Tour 5G

**\$25.05 Per Person, Double Room with Bath**  
**\$29.05 Per Person, Single Room with Bath**

FIRST DAY SECOND DAY  
Transfer by Yellow Taxi Cab from Station to Hotel. Breakfast at Hotel. Souvenir Admission Ticket to Exposition. Complete 50-Mile Sight-seeing Tour of Chicago Starting at Your Hotel and Terminating at Entrance to Exposition Grounds. Tour of Exposition Grounds. Admission to Exposition. Dinner. Lodging. Twilight Cruise on Lake Michigan.

### THIRD DAY

Breakfast at Hotel. Admission to Exposition. Dinner. Lodging.

### FOURTH DAY

Breakfast at Hotel. Admission to Exposition. Dinner. Lodging.

### FIFTH DAY

Breakfast at Hotel. Admission to Exposition. Transfer by Yellow Taxi Cab from Hotel to Station.

## SIX DAYS IN CHICAGO

### Tour 6F

**\$18.55 Per Person, Double Room with Bath**  
**\$23.55 Per Person, Single Room with Bath**

FIRST DAY SECOND DAY  
Transfer by Yellow Taxi Cab from Station to Hotel. Admission to Exposition. Souvenir Admission Ticket to Exposition. Lodging. FOURTH DAY  
Tour of Exposition Grounds. Admission to Exposition. Lodging.

### THIRD DAY

Admission to Exposition. Lodging. FIFTH DAY  
Admission to Exposition. Lodging.

### SIXTH DAY

Transfer by Yellow Taxi Cab from Hotel to Station.

### Tour 6G

**\$29.05 Per Person, Double Room with Bath**  
**\$34.05 Per Person, Single Room with Bath**

FIRST DAY SECOND DAY  
Transfer by Yellow Taxi Cab from Station to Hotel. Breakfast at Hotel. Souvenir Admission Ticket to Exposition. Complete 50-Mile Sight-seeing Tour of Chicago Starting at Your Hotel and Terminating at Entrance to Exposition Grounds. Tour of Exposition Grounds. Admission to Exposition. Dinner. Lodging. Twilight Cruise on Lake Michigan.

### THIRD DAY

Breakfast at Hotel. Admission to Exposition. Dinner. Lodging.

### FOURTH DAY

Breakfast at Hotel. Admission to Exposition. Dinner. Lodging.

### FIFTH DAY

Breakfast at Hotel. Admission to Exposition. Dinner. Lodging.

### SIXTH DAY

Breakfast at Hotel. Transfer by Yellow Taxi Cab from Hotel to Station.

## WHAT PRICES INCLUDE

### Hotels

Rooms with bath will be furnished at one of Chicago's first class hotels.

### Meals

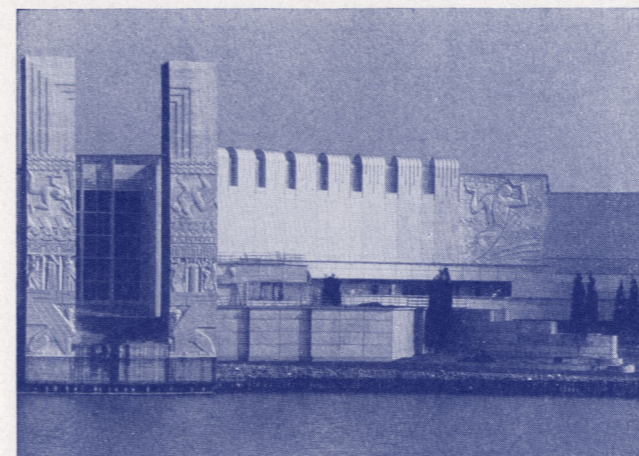
Where meals are included, breakfast will be served at the Hotel at which you are stopping. Dinner will be served at any restaurant on the Exposition Grounds or at your Hotel.

### Sight-seeing

Where Tour of Chicago is included it will be made in motor buses of the Gray Line and will include Chicago's famous park and boulevard system, University of Chicago, Midway of 1893 World's Fair, the Gold Coast, Navy Pier, Art Institute and the beaches, under direction of a competent guide.

### Tour of Exposition Grounds

A complete circuit of the Fair grounds in special observation motor buses, passing every important building, exhibit, amusement and show center, each of which will be explained by Guide Lecturer, enabling the visitor to plan his further activities.



### Twilight Cruise

The S. S. "Roosevelt" will leave its berth at Michigan Avenue Bridge and Chicago River at 9:15 P.M. daily for a two-hour trip extending from Lincoln Park on the North to Jackson Park on the South,—25 miles of delightful panorama—passing the Exposition with its nightly display of the most spectacular illumination in colors the world has ever seen. A delightful all-day cruise across Lake Michigan may be substituted if desired.

### Admission

Souvenir admission ticket which also includes either Fort Dearborn Replica, the Lama Temple or Colonial Village is provided for the first day and general admission tickets for the other days.

### Transfers

Between Hotel and Exposition grounds and between Hotel and Steamer pier which are not included in price, may be made in comfortable and roomy Chicago Motor Coaches for 10¢ per person.

### Service

On arrival at the Station present your Tour Certificate at the American Express Company's Bureau, prominently located in the Station, where book of coupons will be provided which will entitle you to all features included in the Tour you select.

## SEE HOW LITTLE IT COSTS

The New York Central Lines sell round trip tickets to Chicago from all stations on the system at unusually low fares.

The fares for individual travel from principal points are shown below. Proportionately low fares from all other points. In addition to the reduction for individual travel, special reductions will be made for parties traveling together.

To Chicago and return	Coach Fares See Note A	Pullman or Coaches Pullman Fares Additional. See Notes B and C			One Way Pullman Fares For Reduced Round-Trip Pullman Fares with 15-Day Limit See Note B				
		15-Day Limit	15-Day Limit	30-Day Limit	Lower Berth	Section*	Private Bedroom*	Compartment	Drawing Room
Anderson, Ind.	\$ 5.55	\$ 6.90	\$ 9.95	\$ 3.75	\$ 5.25			\$10.50	\$13.50
Ann Arbor, Mich.	7.45	9.20	13.40	3.75	5.25	\$ 6.75		10.50	13.50
Ashtabula, Ohio	11.95	14.55	21.45	3.75	5.25			10.50	13.50
Battle Creek, Mich.	4.95	6.20	8.90	3.00	4.20			9.00	10.50
Bay City, Mich.	8.95	11.00	16.15	3.75	5.25			10.50	13.50
Buffalo, N. Y.	15.70	19.10	28.25	5.63	7.88	10.13		15.75	21.00
Cairo, Ill.	①10.95	13.35	①14.55	2.75	3.85			8.00	10.00
Charleston, W. Va.	14.70	17.85	26.40						
Cincinnati, Ohio	8.55	10.55	15.40	3.75	5.25	6.75		10.50	13.50
Cleveland, Ohio	10.25	12.55	18.40	3.75	5.25	6.75		10.50	13.50
Columbus, Ohio	9.40	11.50	16.90	3.75	5.25			10.50	13.50
Dayton, Ohio	8.55	10.55	15.40						
Detroit, Mich.	8.20	10.10	14.75	3.75	5.25	6.75		10.50	13.50
Dunkirk, N. Y.	14.55	17.75	26.20	4.50	6.30	8.10		12.75	16.50
Elkhart, Ind.	3.05	3.90	5.45						
Elyria, Ohio	9.50	11.65	17.05	3.75	5.25			10.50	13.50
Erie, Pa.	13.15	16.05	23.70	4.50	6.30	8.10		12.75	16.50
Evansville, Ind.	② 8.65	10.60	② 11.50	3.50	5.00			7.00	9.00
Grand Rapids, Mich.	5.55	6.90	9.95	3.00	4.20			9.00	10.50
Indianapolis, Ind.	* 5.50			3.75	5.25	6.75		10.50	13.50
Jackson, Mich.	4.25	7.80	11.35	3.75	5.25	6.75		10.50	13.50
Kalamazoo, Mich.	* 3.60			3.00	4.20			9.00	10.50
Lafayette, Ind.	6.65	8.25	11.95	3.75	5.25			10.50	13.50
Lansing, Mich.	③ 6.85	8.50	③ 9.15	2.50	3.50			7.00	9.00
Lawrenceville, Ill.	④ 11.60	14.15	20.85	3.75	5.25			10.50	13.50
London, Ont.	* 9.00			3.75	5.25			10.50	13.50
Louisville, Ky.	12.35	15.05	22.20	4.50	6.30			12.75	16.50
Mackinaw City, Mich.	14.55	17.70	26.15						
McKeesport, Pa.	5.65	7.05	10.20	3.75	5.25			10.50	13.50
Muncie, Ind.	12.75	15.55	22.95	4.50	6.30			12.75	16.50
New Castle, Pa.									
Niagara Falls, N. Y.:									
Direct	15.30	18.65	27.55	5.63	7.88			15.75	21.00
Via Buffalo	15.70	19.10	28.25	5.63	7.88			15.75	21.00
Niles, Mich.	2.80	3.60	5.05						
Pittsburgh, Pa.	14.10	17.15	25.35	4.50	6.30			12.75	16.50
Saginaw, Mich.	8.60	10.55	15.45	3.75	5.25			10.50	13.50
St. Thomas, Ont.	11.55	14.15	20.80	3.75	5.25			10.50	13.50
Sandusky, Ohio	8.45	10.40	15.20	3.75	5.25			10.50	13.50
South Bend, Ind.	2.60	3.35	4.65						
Springfield, Ohio	9.10	11.15	16.35						
Toledo, Ohio	7.05	8.70	12.65	3.75	5.25			10.50	13.50
Westfield, N. Y.	14.05	17.10	25.30	4.50	6.30	8.10		12.75	16.50

\* Good also in Pullman cars on payment of the reduced Pullman fares which are available daily in connection with these fares.

★ Fares shown above for section and private bedroom are for single occupancy. Slightly higher fares when occupied by two persons.

Note A—15-Day Coach Fares—Good going daily to October 30 with final return limit of 15 days, in addition to date of sale. These tickets are good in coaches only. Stopovers will be permitted at all points en route either going or returning.

Note B—15-Day Fares with Reduced Round-Trip Pullman—Every Tuesday and Saturday to October 30th, with final return limit of 15 days in addition to date of sale. Stopovers within limit of ticket will be allowed at all points on the return trip. REDUCED PULLMAN FARES—In connection with the 15-day tickets, Pullman accommodations may be secured at a reduction from the regular Pullman fare. In case stopover is made, the regular Pullman fares will be charged.

Note C—30-Day Fares—Every Tuesday and Saturday to October 30th, with final return limit of 30 days in addition to date of sale. Tickets good in Pullman cars upon payment of Pullman fare. Stopover will be permitted at all points on the return trip.

①\$13.11, limit 30 days on sale daily; \$7.30 on sale Fri., Sat. and Sun., limit 10 days.  
②\$10.35, limit 30 days on sale daily; \$6.00 on sale Fri., Sat. and Sun., limit 10 days.  
③\$8.23, limit 30 days on sale daily; \$4.60 on sale Fri., Sat. and Sun., limit 10 days.  
④On sale daily. Also \$18.20, limit 6 months.  
⑤On sale daily. Also \$14.35, limit 6 months.  
⑥On sale daily. Also \$11.40, limit 6 months.