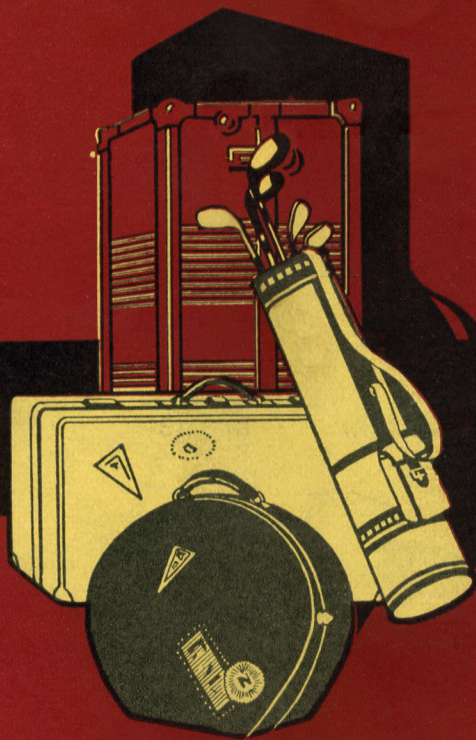


NORFOLK AND WESTERN RAILWAY



TIME
TABLES

NORFOLK AND WESTERN RAILWAY



TIME
TABLES

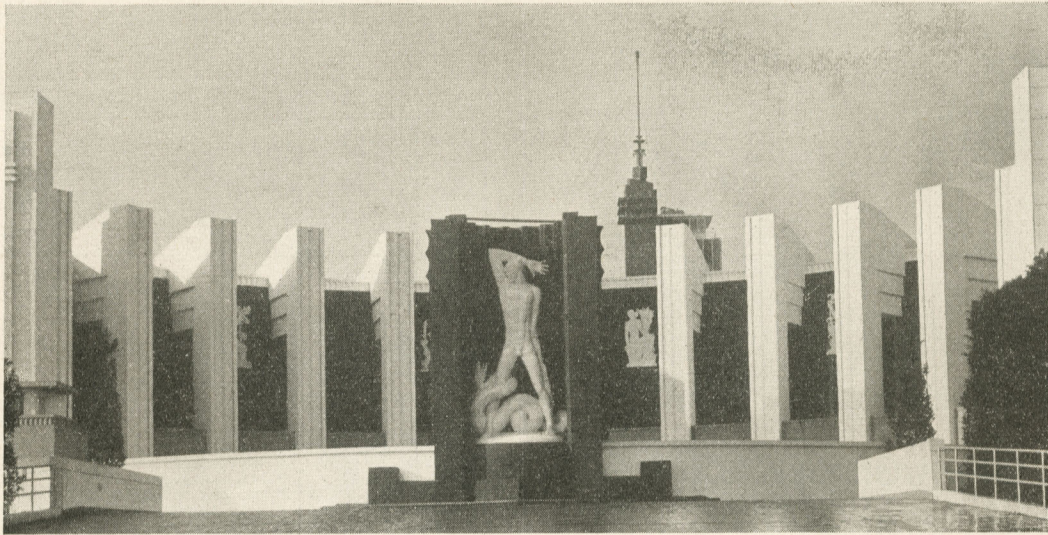


THE NORFOLK AND WESTERN EXHIBIT AT A CENTURY OF PROGRESS EXPOSITION

You and your friends
 are cordially invited to visit the
FUEL SATISFACTION EXHIBIT
 of the **NORFOLK AND WESTERN RAILWAY** in the
 General Exhibits Building
A CENTURY OF PROGRESS
 International Exposition

Chicago, Illinois » » » « « « June 1 to October 31, 1933

NORFOLK AND WESTERN RAILWAY
 CARRIER OF FUEL SATISFACTION



THE SCULPTURED PANELS, NORTH ELEVATION, HALL OF SCIENCE BUILDING

NOW AT ITS BEST

A CENTURY OF PROGRESS EXPOSITION

CHICAGO, ILLINOIS < < < > > > JUNE 1 TO OCTOBER 31, 1933

NO INTERNATIONAL EXPOSITION of the past decade has offered so much in interest and entertainment; and none has presented so vast a record of achievement. From throughout the country the attendance has increased week by week as the educational value of this spectacular array of buildings and exhibits becomes more widely known. The artistic, mechanical, industrial and commercial development of a century, as here displayed, is indescribable in its magnitude. To the young it should bring thrills of imagination; and, to those of more mature years, it must convey great satisfaction at having lived through so much of this notable age of progress.

The Norfolk and Western Railway is aiding many of its patrons by offering an economical and all-embracing plan which

includes hotel accommodations in Chicago, taxi-transfers between station and hotel, admission to the Exposition and local sight-seeing. American Express Travel Service coupons are purchasable with your railway ticket. These advance arrangements insure your hotel accommodations—and you know, before you leave, exactly what you will invest in your trip.

For this amazingly convenient service the rates are attractively low. For example, the minimums (including hotel, transfers, admission to the Exposition and sight-seeing) are: 1-day tour \$4.00; 2-day tour \$7.00; 3-day tour \$9.50; 4-day tour \$11.25; 5-day tour \$12.75, etc. Such very low rates combined with reduced rail fares to Chicago emphasize the economy, speed, comfort and safety of rail travel.

Norfolk and Western Ticket Agents will gladly give you complete information as to this money-saving arrangement for visiting A Century of Progress Exposition.

NORFOLK AND WESTERN RAILWAY

PRECISION TRANSPORTATION