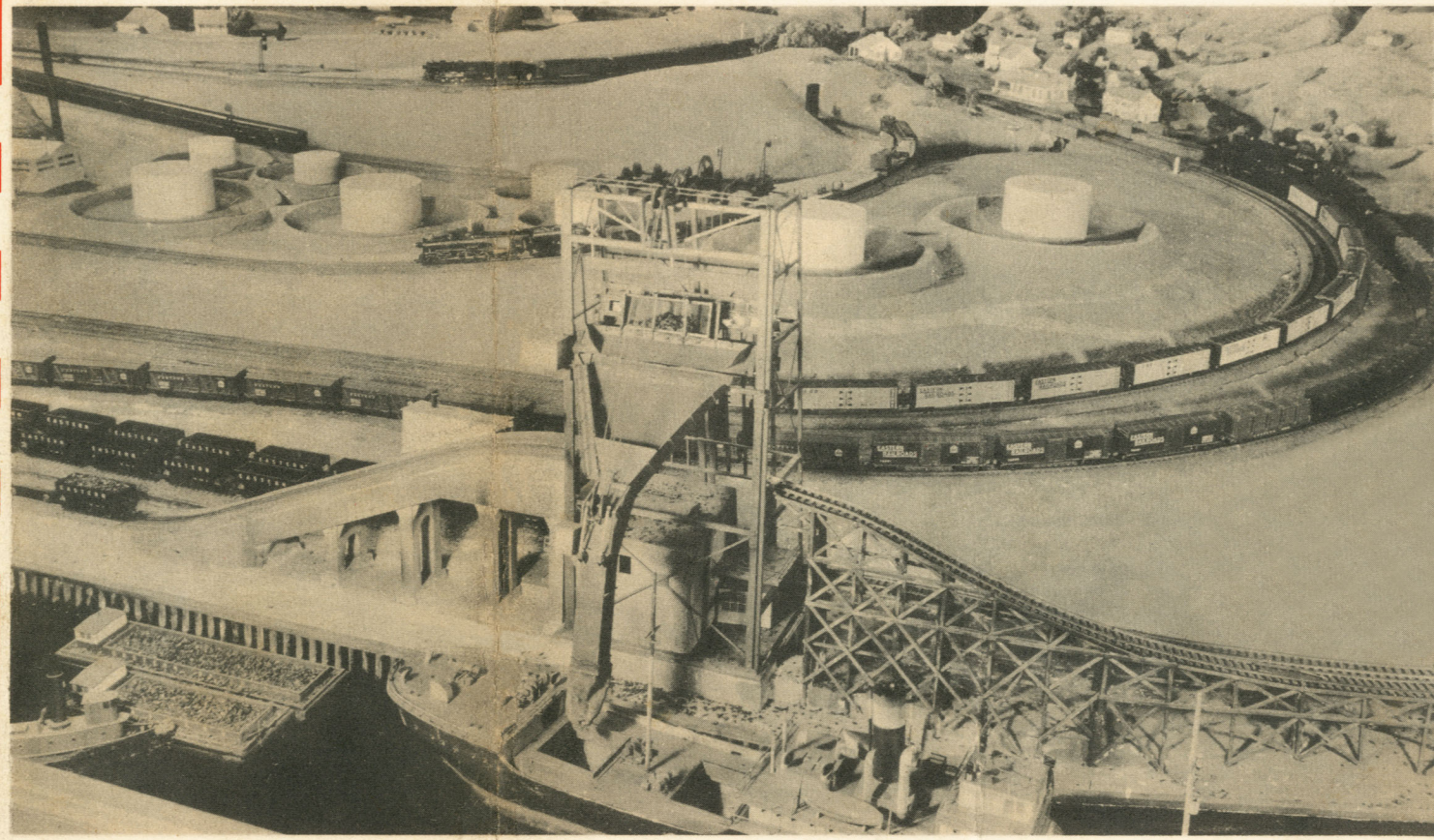


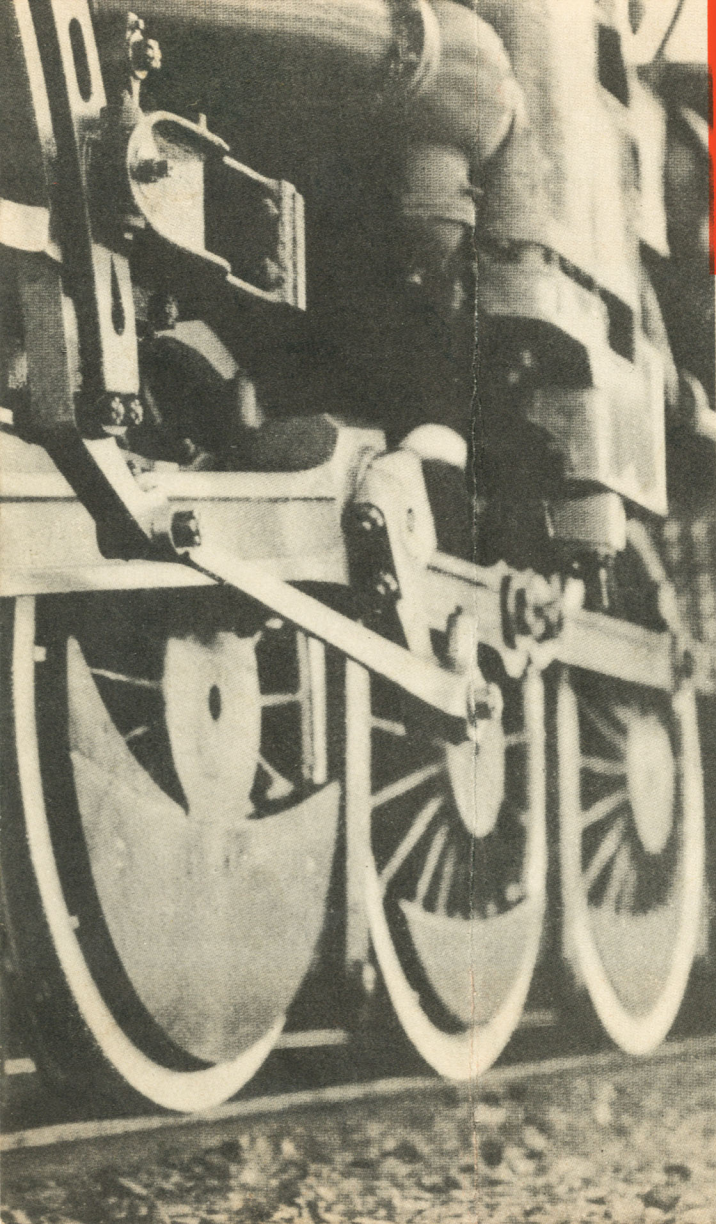
Railroads in Action

**LARGEST
MODEL
RAILROAD
IN THE
WORLD**

5c



at the NEW YORK WORLD'S FAIR 1940



EASTERN RAILROADS

Sponsoring the Railroad Exhibit

Baltimore & Ohio Railroad

Bangor & Aroostook Railroad

Bessemer & Lake Erie Railway

Boston & Maine Railroad

Central Railroad Company of New Jersey

Central Vermont Railway

Chesapeake & Ohio Railway

Delaware & Hudson Railroad Corporation

Delaware, Lackawanna & Western Railroad

Detroit, Toledo & Ironton Railroad

Erie Railroad

Lehigh & Hudson River Railway

Lehigh & New England Railroad

Lehigh Valley Railroad

Long Island Rail Road

Maine Central Railroad

New York Central System

New York, Chicago & St. Louis Railroad

New York, New Haven & Hartford Railroad

Norfolk & Western Railway

Pennsylvania Railroad

Pennsylvania-Reading Seashore Lines

Pere Marquette Railway

Reading Company

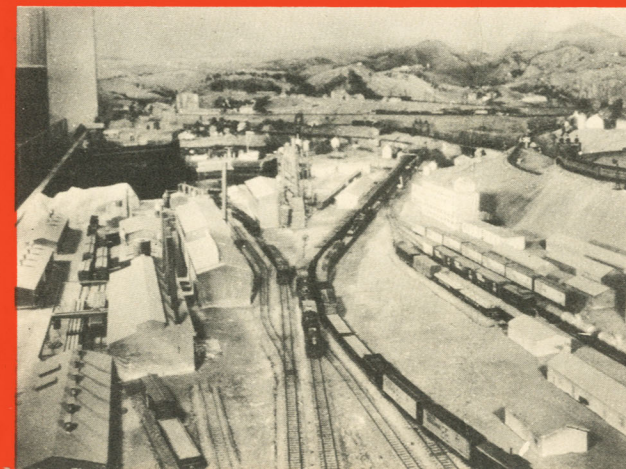
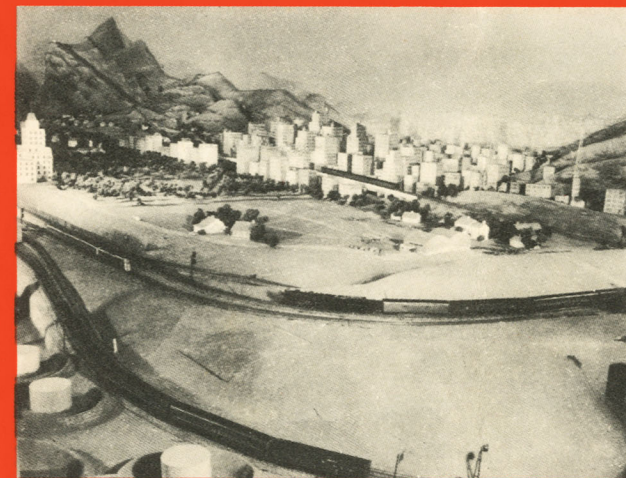
Rutland Railroad

Virginian Railway

Western Maryland Railway

Railroads in Action

LARGEST MODEL RAILROAD IN THE WORLD



RAILROADS IN ACTION presents a thrilling spectacle of actual railroad operation in miniature, never before attempted on such a scale. A huge scenic diorama, 160 feet wide and 40 feet deep, in an auditorium seating 1,000 persons, demonstrates in plane's-eye perspective the actual operation of a railroad system which in full size would extend over fifty square miles, with nearly fifty miles of standard track.

Model locomotives and trains flash by on the identical assignments performed by their big brothers in real life. Speeding through field and forest, over bridges and through tunnels, busy freight trains carry coal from mine to a siding to be loaded into a steamer's hold; streamliners whisk passengers across the countryside and through cities; switching engines perform the "behind-the-scenes" activities of sorting and making up trains and many other fascinating details.

To bring spectators this unparalleled display of the romance and realities of railroading re-

quires more than 500 pieces of rolling stock and 60 locomotives alone—operating on nearly a mile of "O" gauge track.

Each performance begins under a starlit, early morning sky. Dawn breaks and activity is intensified. On through the day trains arrive and depart; loading operations at industrial plants are carried on; car ferries ply across water; a funicular railway climbs a steep mountainside. Whistles blow; steam and smoke pour from locomotive stacks; signals change. As the sun goes down, lights spring up in towns and cities and in the trains themselves; a steamship sets its course for the open sea, guided by lighted beacons; a streamliner rushes through the night with its slumbering passengers.

This unprecedented exhibit, designed and directed by Paul Penhune, is enjoyed by spectators from comfortable seats affording a commanding vista of the entire dramatic spectacle. Performances are continuous from 10 a.m. to 8 p.m. daily. Small admission fee.

THE MODEL RAILROADER'S DREAM COMES TO LIFE

in "Railroads in Action"—a glorious treat for the whole family! 500 pieces of rolling stock—60 locomotives—all in operation! 2,000 switches thrown at every performance, 1,000 train operations daily. You go behind the scenes and see what makes the railroad run!

Interesting Facts about RAILROADS IN ACTION

Every detail of this remarkable dioramic display faithfully reproduces the original.

The scenery is typical of the topographical features of the eastern states of our country: mountains, valleys, forests, lakes, rivers, waterfalls, and ocean. The land is dotted with cities, towns, farms, villages, industrial plants, factories, refineries, and homes—all served by realistic model trains speeding on their many errands.

Almost fantastic are some of the figures relating to the construction of this stupendous spectacle: more than 1,000 individual buildings; 7,000 trees; 250 tiny lights in buildings; more than 7,000 gallons of water in the rivers, lakes, and ocean; over 7,000 square feet in the diorama itself; more than 500 pieces of rolling stock and 60 locomotives.

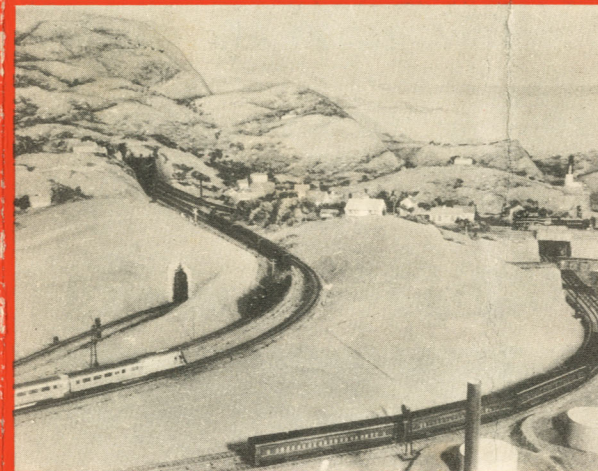
Fifty contractors combined their engineering skill to perfect the details of this spectacular exhibit. Each locomotive involved the assembly of 250 parts. All rolling stock runs on special ball bearings. Tracks are insulated against electrical leakage, with rails specially rolled for maximum wearing qualities.



The roundhouse: home of the iron horse; a freight engine on the turntable is headed for its designated track.



Classification yard; freight cars are classified on different tracks for assembly into trains going to various destinations.



Two fast passenger trains are about to pass on the main line, while a suburban train arrives at a sleepy village.



A coal car at the top of the car dumper sends fifty tons of coal down the chute into the steamer's hold.

Operating the **LARGEST** MODEL RAILROAD IN THE WORLD

From three booths located in the audience, each with its own interlocking controls, operators send the model trains over nearly a mile of "O" gauge track. Lighted diagrams on the control machines enable spectators to follow each action.

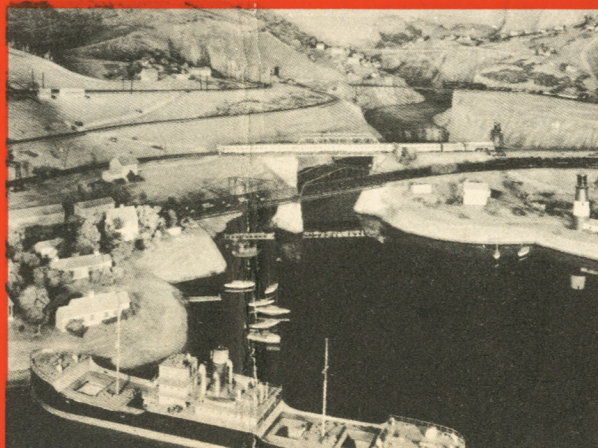
Trains are automatically started, retarded, stopped; signals flashed on and off; cars are loaded, uncoupled, and unloaded, and trains are lighted and darkened—all by special devices designed for "Railroads in Action" and controlled from the booths, requiring more than 2,000 single operations on a closely knit schedule at each performance.

Storage batteries of a type never before used are required for the lighted trains. Each train carries its own batteries for lighting; current is picked up through the rails for motive power.

Five hundred tiny red, amber, and green lights flash on and off in the signal system; masts and other details are built with a view to maximum visibility from the audience and easy replacement.

The ships that sail over the waterways are manipulated by an intricate mechanism below the surface of the water, unobserved by spectators.

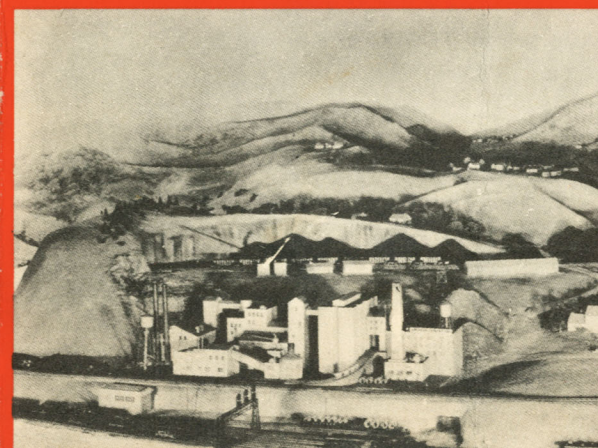
On the bridges, front to rear: a long double-header freight, a fast streamliner, and a work train.



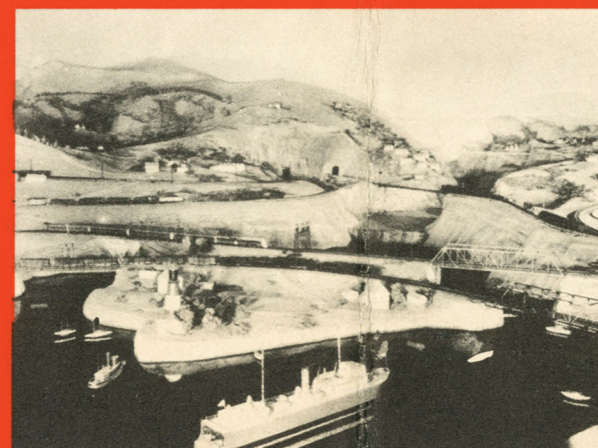
Thriving industry in the foreground; a pleasant suburban town just beyond; a busy metropolis in the distance.



A string of hopper cars waits at the coal mine; in the foreground four tracks converge into two at the cement mill.



The car ferry maneuvers to back into its slip, while a gleaming streamliner crosses the island.

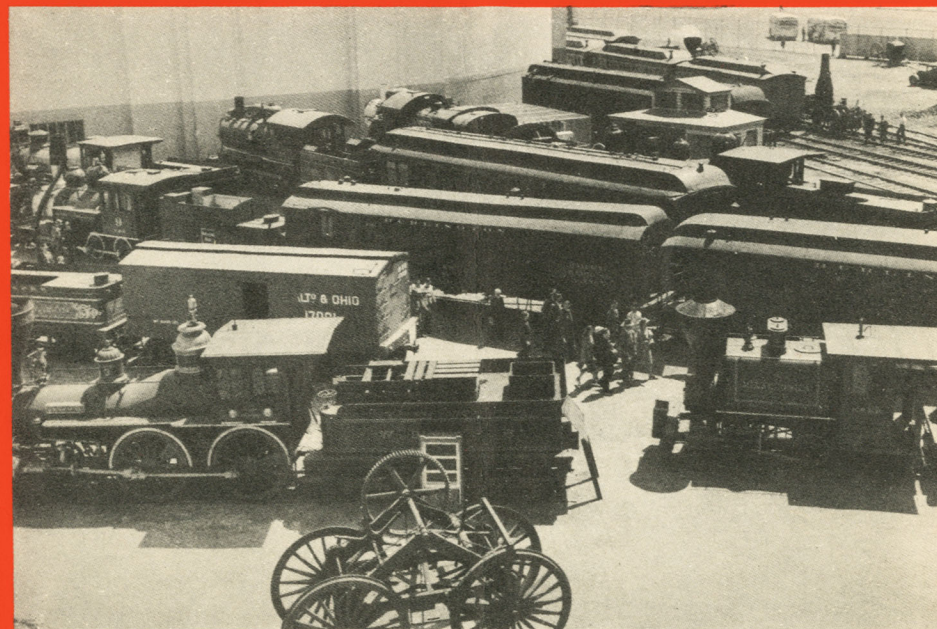


Other Interesting Features of the **RAILROAD EXHIBIT** *at the New York World's Fair 1940*



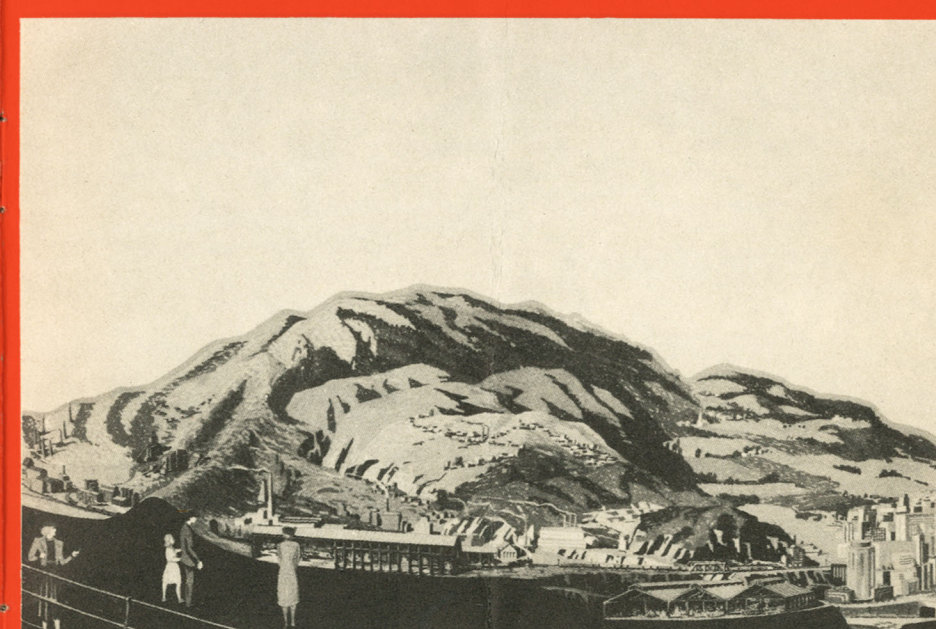
RAILROADS ON PARADE

Edward Hungerford's dramatic musical extravaganza depicts the thrilling story of transport development in America in the greatest spectacle ever presented on one stage. In an open-air theatre seating 4,000, employing actual settings and costumes of the periods depicted, 250 actors and actresses, with orchestra and chorus, 50 horses and oxen, and more than a score of modern and old-time trains under their own steam, present memorable events in our country's railroad development. Four performances daily, at 11:30 a.m., 1:30 p.m., 3:30 p.m., and 5:30 p.m.; 4,000 seats, 25 cents.



THE YARD

In an inner courtyard of the Railroad Building are assembled many old-time locomotives and cars, including The General, of Civil War fame; the Ross Winans; the J. C. Davis; the Colorado & Southern, with train; the Denver & Rio Grande Western; the Pennsylvania H 3 A; the Boston & Maine 494, and the Delaware, Lackawanna & Western 952. In the Railroad Building itself are exhibited prints, museum pieces, paintings, and other railroad lore of a variety never before shown under one roof. Admission to both Railroad Building and the Yard is free.



BUILDING THE RAILROAD

In the rotunda of the Railroad Building is set the huge dioramic display, "Building the Railroad," the exhibit of the railway equipment and supply industries. On this mountainous landscape, 80 feet at the base and 28 feet in height, designed by Leonard Outhwaite, is demonstrated the actual building of a railroad from the clearing of a right-of-way to the finished system. On a spiral ramp that encircles the diorama, visitors follow in detail the various steps in railroad construction. Admission is free.



TRACK EXHIBITS

More than a third of the entire Railroad Exhibit acreage is devoted to exhibits of modern railroad equipment, on upward of 4,500 feet of track. Here are seen the latest achievements of American and foreign locomotives and rolling stock. As a special thriller, the world's largest steam locomotive, 140 feet in length and weighing 526 tons, may be seen operating on a roller bed at high speed, one of the outstanding free attractions at the World's Fair.

A panoramic view of the Panama Canal locks, showing the city of Panama and the surrounding mountains. The image is a color illustration with a red border, depicting the locks and the city of Panama. The locks are shown in the foreground, with ships passing through them. The city of Panama is visible in the middle ground, built on a hillside. The surrounding mountains are in the background, with a large mountain peak in the center. The sky is blue with some clouds. The overall scene is a detailed representation of the Panama Canal locks and the city of Panama.

Perspective View of **RAILROADS IN ACTION**

This huge scenic diorama, 160 feet by 40 feet, demonstrates the complete operation of a modern railroad system, representing in perspective a landscape fifty square miles in area, with nearly fifty miles of standard gauge

track. In the 40-minute performance of "Railroads in Action" more than 500 pieces of rolling stock and 60 locomotives are used to duplicate their big brothers in real life. More than a thousand train operations daily.

Plan of RAILROADS IN ACTION



