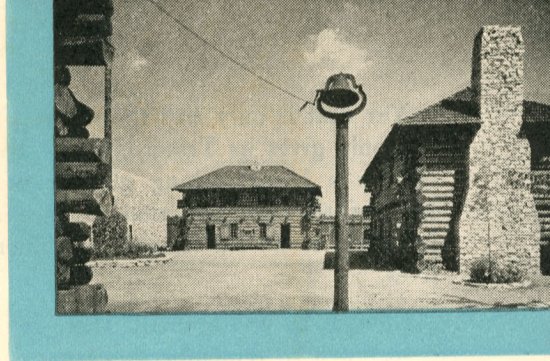


What I saw at the

**CHICAGO
WORLD'S FAIR
1934**





A STORY OF A CENTURY OF PROGRESS—

NO generation of any land or any age has witnessed such amazing progress as have we Americans of today. So breathless has been the human pace that many of us have all but forgotten what life was like in that not-so-distant past.

To mark the progress of a city, a nation and a world over the span of a hundred years, has been the primary purpose of A Century of Progress Exposition. What a fascinating privilege it is to walk within these active acres, while the highlights of a departed era glow before our eager eyes!



Yet that is only *half* the story. The Exposition not only gives us Yesterday and Today, but there is also a breath-taking glimpse of Tomorrow—a hint of the wonders that Science and Invention have yet to unfold for the enrichment of our daily lives.

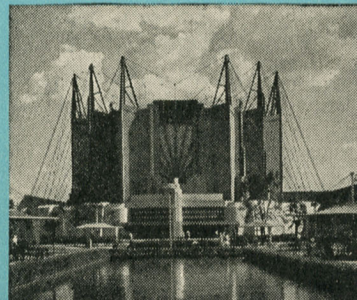
In such an environment there is so much to see—so much to remember! Perhaps this little book may prove a timely aid. Use it freely to record your impressions. These brief notes made while the memories of this great Exposition are fresh in your mind will enable you in later years to recall with delight the joys of the glorious days spent at the Chicago World's Fair in 1934.

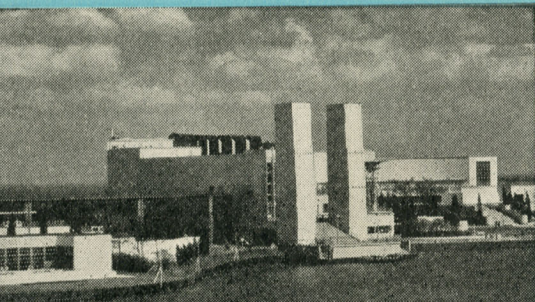
With our very best wishes, we present you an inviting area of nice white space, all ready for your busy pen or pencil!



TRAVEL and TRANSPORT BUILDING

The lessening of the influence of time and distance is one of man's outstanding achievements in the past century. The tense story of his quest for speed and more speed is graphically revealed in this building. Past and present conveyances for travel by land, water, and air are here displayed.



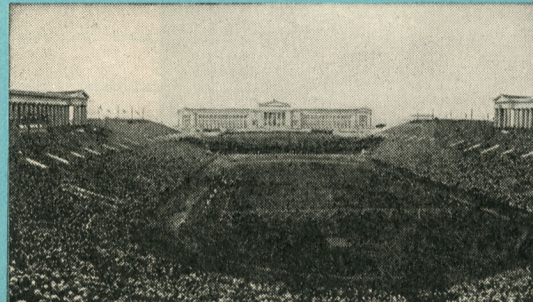


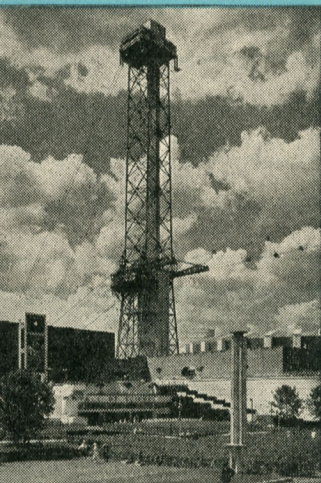
ELECTRICAL BUILDING

To the layman it's nothing short of modern wizardry, the things that are done with that strange force we know as electricity. See them demonstrated here.

SOLDIER FIELD

In this huge, handsome stadium are enacted pageants and operas, and here the major sports events are held. It adjoins the Fair grounds.





SKY RIDE

The unique thrill of the Fair. The towers are 625 feet high, the cars 225 feet above ground.



AVENUE OF FLAGS

Glowing with color and alive with motion, this gala Avenue of Flags greets the visitor to the Fair.



SOCIAL SCIENCE BUILDING

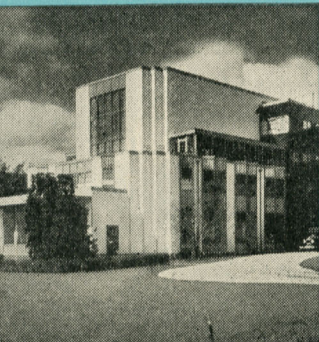
How we ourselves have progressed is the theme of this building's exhibits. All the agencies at work to improve living conditions, foster education and culture, and make our cities and homes better places to live in are here represented.

ADMINISTRATION BUILDING

GENERAL EXHIBITS BUILDING

Sheer silk stockings are made while you watch, and disks of metal become tubes full of toothpaste, boxed and ready for sale. How man makes use of the findings of science and creations of artists to fulfill his needs and wants is graphically demonstrated here.





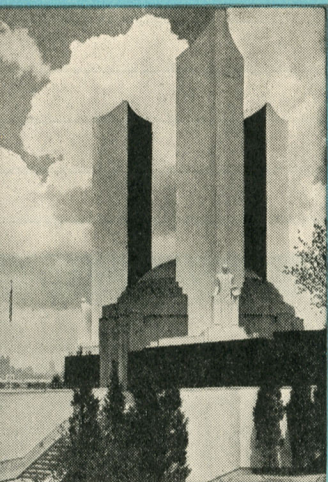
ADMINISTRATION BUILDING

Heart of the Fair is this building. For four years it has been bustling with activity. Here all of the thousands of details incident to the creation of A Century of Progress and the administration of its complicated affairs are attended to. It is closed to the public, but its exterior presents a beautiful aspect of modern architecture.

A LINCOLN GROUP

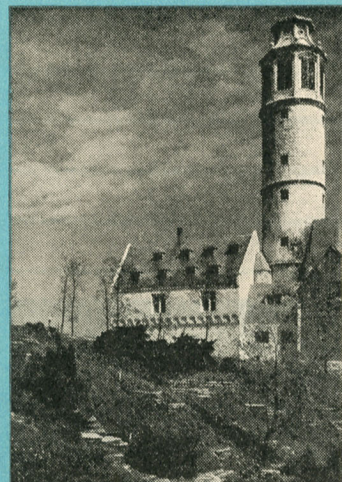
Dramatic episode in the life of the Great Emancipator are here recalled by faithful replicas of the buildings in which they happened. The cabin where he was born, the Indiana home, Rutledge Tavern the general store, and the Wigwam are to be seen here.





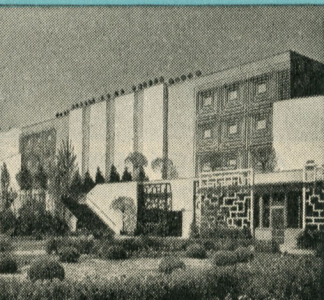
FEDERAL BUILDING

One of the beauty spots of the Fair is this Federal Building and adjacent Hall of States.



ALPINE GARDENS

A bit of Switzerland's distinctive beauty transplanted to delight millions of Fair-goers.

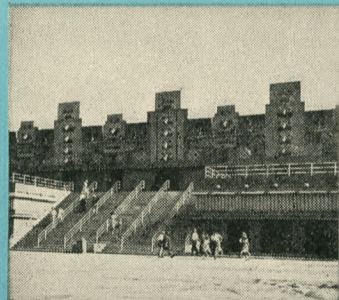


HORTICULTURE BUILDING

Acres of indoor gardens! Millions of blooms, changing with the season, and thousands of plants and shrubs, make this a garden-lovers' paradise. The florists and gardeners of the nation have vied with each other in the creation of a mammoth fairyland.

MAYA TEMPLE

Centuries before Columbus was born the relatively civilized Indians of Mexico built buildings like this. The original of this one was a Maya nunnery at Uxmal, near the present capital of Yucatan.



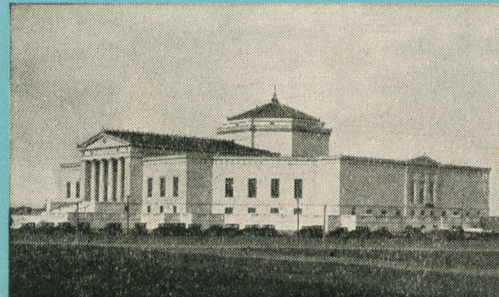


FIELD MUSEUM

Within this classic building adjacent to the Fair is one of the world's finest and largest natural history exhibits, including the marvelous Akley groups of wild animals.

SHEDD AQUARIUM

One of Chicago's proudest possessions is this exquisite new aquarium housing a most spectacularly beautiful array of real, live fish from the seven seas and inland waters.



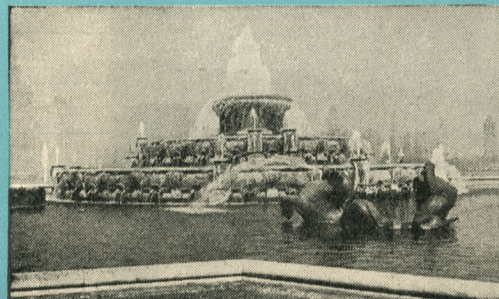


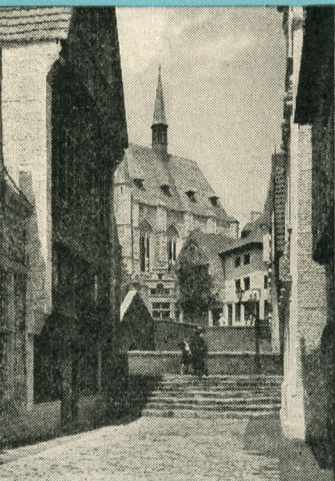
FIREWORKS

What's a fair without fireworks? Almost nightly a glorious display of pyrotechny is released from the top of the lofty Sky Ride and from barges in the quiet lagoon.

BUCKINGHAM FOUNTAIN

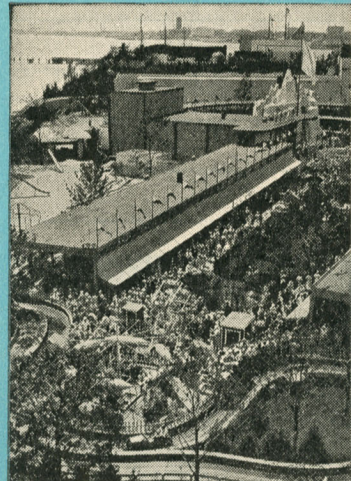
Even the famed fountains of Versailles do not surpass the splendor and magnificence of this huge display of spouting waters, gorgeously illuminated in rainbow hues each night.





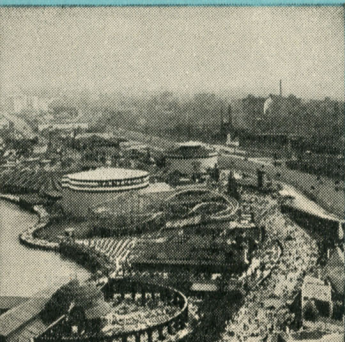
BELGIAN VILLAGE

All the quaint charm of a Belgian village resides in this most interesting group of buildings.



ENCHANTED ISLAND

A child's dream of Fairyland come true! Youngsters have the time of their lives in this enchanted spot.

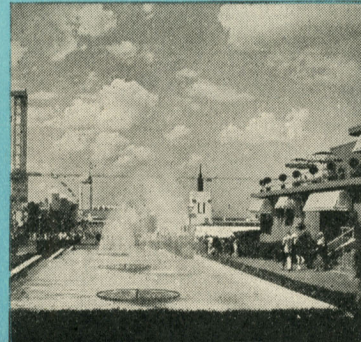


THE MIDWAY

Glorious fun rules the Midway. Thrilling rides, fascinating freaks, side shows, and every sort of fun-maker you ever heard of are congregated here for the enjoyment of young and old. Not all of man's genius has gone for the serious things in life. Here you see what has been concocted to make you laugh.

AN ENTRANCING VISTA

The beauty of A Century of Progress Exposition will long be remembered. Not only is each brilliantly lighted building a lovely sight in itself, but many entrancing vistas present themselves one after the other, due to the ingenious landscaping and careful planning, have resulted in a truly beautiful Exposition.





ART INSTITUTE

The art treasures of this famous gallery are this year augmented by masterpieces of all times and countries, loaned by their owners so that visitors to the Fair might see, in one place, a representative exhibit of the world's greatest artists.

TEMPLE OF JEHOL

This exquisite Golden Pavilion of Jehol, with its gold-leaf roof, brilliant pillars, and delicate carvings, is an exact replica of an eighteenth century Chinese Temple, built 1767. Its interior is likewise beautiful and interesting and an attendant explains its intricacies.





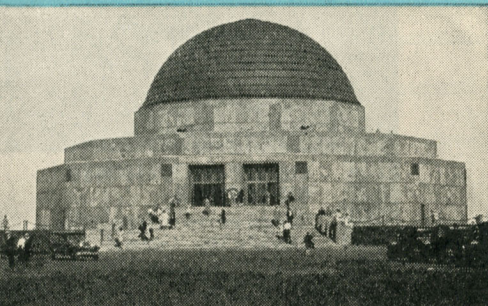
NIGHT SCENE

The Fair by day and by night are two different Fairs! The magic of light and color does the trick.



GENERAL EXHIBITS BUILDINGS

One of many unforgettable views. The General Exhibits Buildings in the background.

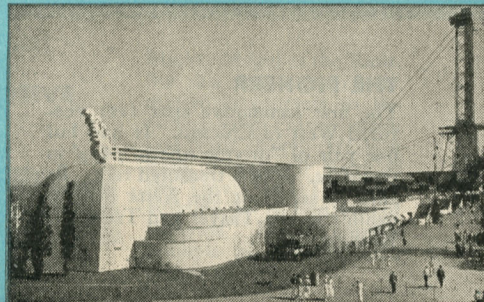


ADLER PLANETARIUM

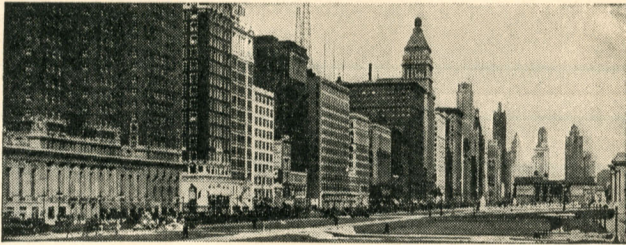
Within the huge central dome is enacted the drama of the heavens, with replica sun, moon, planets, and stars performing with startling accuracy and unbelievable realism.

AGRICULTURE BUILDING

Every visitor to the Fair finds this one of the most interesting of all buildings. Oldest of industries, the business of producing and preparing food has also progressed, as you will see here.



connections, business all of the West and Northwest
and a few miles of strip, and the great West
have grown from a small second-hand engine
attachment to a mighty machine. And we too
We have seen Chicago grow from a river bank
venture beyond Chicago and the horizon
This you know was the way that railways
Our original plan was later better than a
Century of Progress. We too have our traditions
You should see with Chicago in evidence
It is particularly fitting that the West should
also realize the fact that
EMERALD CITY
THE RAILROAD THAT
WITH CHICAGO



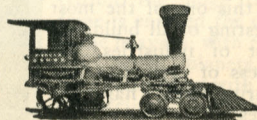
THE RAILROAD THAT "Grew-up" WITH CHICAGO

IT IS particularly fitting that the *North Western Line* should join with Chicago in celebrating A Century of Progress. We, too, have our traditions. Our original charter dates back nearly a century. This, you know, was the very first railway to venture beyond Chicago into the hazardous west.

We have seen Chicago grow from a river-bank settlement to a mighty metropolis. And we, too, have grown. From a small second-hand engine and a few miles of strap rails, the *North Western* has developed into a powerful system that, with its connections, embraces all of the West and Northwest.

THE PIONEER

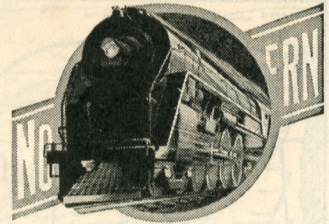
The first locomotive that ever ventured West of Chicago. It had but one pair of "driving wheels", $4\frac{1}{2}$ ' in diameter. Now a treasured relic. Be sure to see it at the *North Western* exhibit in the Travel and Transport building.



Our record, through the century, has been one of consistent Progress. *North Western* was the first western railway to operate trains by telegraph, and to operate sleeping cars.

North Western built the first railway postal car, in 1864, and operated the first dining-car service between Chicago and San Francisco. Ours was the first double-track railway between Chicago and the Missouri River.

North Western was the first railway in the United States to organize a Safety First department, and to make extensive use of Automatic Train Control, expending more than three million dollars for this purpose.



A FLEET OF FINE, FAST TRAINS

SAN FRANCISCO OVERLAND LIMITED

LOS ANGELES LIMITED

THE PORTLAND ROSE

PACIFIC LIMITED

MOUNTAIN BLUEBIRD THE COLUMBINE

NORTH WESTERN LIMITED

THE VICTORY

CORN KING LIMITED

DULUTH-SUPERIOR LIMITED

THE VIKING

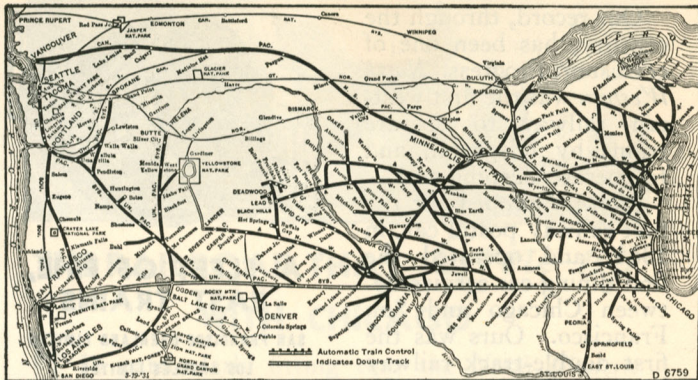
SOO-DOMINION

ROCHESTER-MINNESOTA SPECIAL

MODEL "H" LOCOMOTIVE



Mighty Mogul of the Rails. See this new modern locomotive in contrast to the puffing little *Pioneer*, when you visit North Western Park immediately south of the Travel and Transport building at A Century of Progress. It's a graphic example of transportation progress.



MAP OF CHICAGO & NORTH WESTERN LINE AND CONNECTIONS TO THE PACIFIC COAST

THE DIRECT ROUTE TO ALL POINTS IN THE WEST AND NORTHWEST

GLANCE at the map above. Trace the course of the *North Western Line*. See how completely it dominates a great area. But it takes more than *rails* to make a powerful railway dominion.

We have invested multiplied millions in equipment to ably aid the people of this region, who have come to look upon the familiar *North Western* insignia as a symbol of progressive and dependable service.

For travel information apply to any ticket agent or address

R. THOMSON

Passenger Traffic Manager

400 W. Madison St., Chicago, Ill.

CHICAGO & NORTH WESTERN LINE



CHICAGO & NORTH WESTERN AGENCIES

CHICAGO, ILL.	148 S. Clark St. Passenger Station, Madison and Canal Sts.
ATLANTA, GA.	614 Volunteer Bldg.
BOSTON, MASS.	294 Washington St.
BUFFALO, N. Y.	295 Main St.
CEDAR RAPIDS, IOWA	326 First Ave., N. E.
CINCINNATI, OHIO	49 E. Fourth St.
CLEVELAND, OHIO	1106 Terminal Tower Bldg.
COUNCIL BLUFFS, IOWA	Broadway Passenger Sta., 11th and Broadway
DALLAS, TEXAS	1103 Southwestern Life Bldg.
DENVER, COLO.	17th and Welton Sts.
DES MOINES, IOWA	619 Locust St.
DETROIT, MICH.	131 LaFayette Blvd.
DULUTH, MINN.	424 W. Superior St.
GREEN BAY, WIS.	300 Dousman St.
INDIANAPOLIS, IND.	308 Merchants Bank Bldg.
KANSAS CITY, MO.	534 Railway Exchange Bldg.
LINCOLN, NEB.	130 S. 13th St.
LOS ANGELES, CALIF.	601 S. Hill St.
MADISON, WIS.	201 S. Blair St.
MILWAUKEE, WIS.	229-231 E. Wisconsin Ave.
MINNEAPOLIS, MINN.	701 Marquette Ave. at 7th
NEW ORLEANS, LA.	930 Hibernia Bank Bldg.
NEW YORK, N. Y.	Room 322, 500 Fifth Ave.
OMAHA, NEB.	814 Brandeis Theatre Bldg.
PEORIA, ILL.	200-208 S. Jefferson St.
PHILADELPHIA, PA.	1400 S. Penn Square
PITTSBURGH, PA.	535 Smithfield St.
PORTLAND, ORE.	921 S. W. Washington St.
RAPID CITY, S. D.	Alex Johnson Hotel
ROCHESTER, MINN.	The Kahler
ST. LOUIS, MO.	314 N. Broadway
ST. PAUL, MINN.	81 E. 5th St. (Cor. Minnesota St.)
SALT LAKE CITY, UTAH	10 S. Main St.
SAN FRANCISCO, CALIF.	681 Market St.
SEATTLE, WASH.	4th Ave. and Union St.
SIoux CITY, IOWA	520 Nebraska St.
SIoux FALLS, S. D.	424 E. Eighth St.
SPOKANE, WASH.	615 Old National Bank Bldg.
TACOMA, WASH.	608 Tacoma Bldg.
TULSA, OKLA.	201 Cosden Bldg.
WINNIPEG, MAN.	220 McIntyre Bldg.
WIXONA, MINN.	54 Center St.

R. THOMSON, P. T. M.

C. & N. W. Ry.

Chicago, Ill.

E. L. PARDEE, P. T. M.

C. St. P. M. & O. Ry.

St. Paul, Minn.

CHICAGO & NORTH WESTERN LINE