

SOUVENIR
CHICAGO WORLD'S FAIR
1933



Compliments of

CHICAGO &
NORTH WESTERN
RAILWAY

1933

JANUARY							MAY							SEPTEMBER							
S	M	T	W	T	F	S	S	M	T	W	T	F	S	S	M	T	W	T	F	S	
1	2	3	4	5	6	7	1	2	3	4	5	6	1	2	3	4	5	6	7	8	9
8	9	10	11	12	13	14	7	8	9	10	11	12	13	3	4	5	6	7	8	9	
15	16	17	18	19	20	21	14	15	16	17	18	19	20	10	11	12	13	14	15	16	
22	23	24	25	26	27	28	21	22	23	24	25	26	27	17	18	19	20	21	22	23	
29	30	31	28	29	30	31	24	25	26	27	28	29	30	

FEBRUARY							JUNE							OCTOBER						
...	1	2	3	4	1	2	3	1	2	3	4	5	6	7	
5	6	7	8	9	10	11	4	5	6	7	8	9	10	8	9	10	11	12	13	14
12	13	14	15	16	17	18	11	12	13	14	15	16	17	15	16	17	18	19	20	21
19	20	21	22	23	24	25	18	19	20	21	22	23	24	22	23	24	25	26	27	28
26	27	28	25	26	27	28	29	30	...	29	30	31

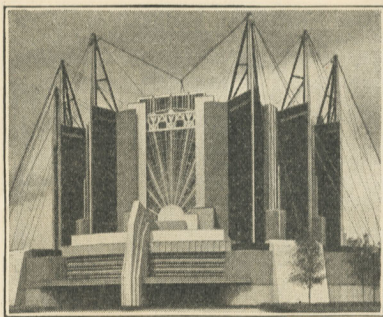
MARCH							JULY							NOVEMBER							
...	1	2	3	4	1	2	3	4	1	2	3	4
5	6	7	8	9	10	11	2	3	4	5	6	7	8	5	6	7	8	9	10	11	
12	13	14	15	16	17	18	9	10	11	12	13	14	15	12	13	14	15	16	17	18	
19	20	21	22	23	24	25	16	17	18	19	20	21	22	19	20	21	22	23	24	25	
26	27	28	29	30	31	...	23	24	25	26	27	28	29	26	27	28	29	30	

APRIL							AUGUST							DECEMBER								
...	1	1	2	3	4	5	1	2
2	3	4	5	6	7	8	6	7	8	9	10	11	12	3	4	5	6	7	8	9		
9	10	11	12	13	14	15	13	14	15	16	17	18	19	10	11	12	13	14	15	16		
16	17	18	19	20	21	22	20	21	22	23	24	25	26	17	18	19	20	21	22	23		
23	24	25	26	27	28	29	27	28	29	30	31	24	25	26	27	28	29	30		
30	31		

1934

JANUARY							MARCH							MAY							
S	M	T	W	T	F	S	S	M	T	W	T	F	S	S	M	T	W	T	F	S	
1	2	3	4	5	6	7	1	2	3	1	2	3	4	5
8	9	10	11	12	13	14	4	5	6	7	8	9	10	6	7	8	9	10	11	12	
15	16	17	18	19	20	21	11	12	13	14	15	16	17	13	14	15	16	17	18	19	
22	23	24	25	26	27	28	18	19	20	21	22	23	24	20	21	22	23	24	25	26	
29	30	31	25	26	27	28	29	30	31	27	28	29	30	31	

FEBRUARY							APRIL							JUNE							
...	1	2	3	4	1	2	3	4	5	6	7	1	2
5	6	7	8	9	10	11	8	9	10	11	12	13	14	3	4	5	6	7	8	9	
12	13	14	15	16	17	18	15	16	17	18	19	20	21	10	11	12	13	14	15	16	
19	20	21	22	23	24	25	22	23	24	25	26	27	28	17	18	19	20	21	22	23	
26	27	28	29	30	24	25	26	27	28	29	30	



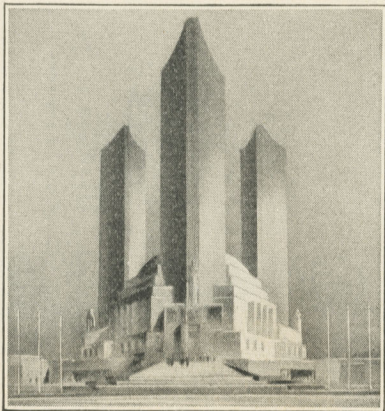
Travel and Transport Building

A CENTURY OF PROGRESS EXPOSITION CHICAGO 1933

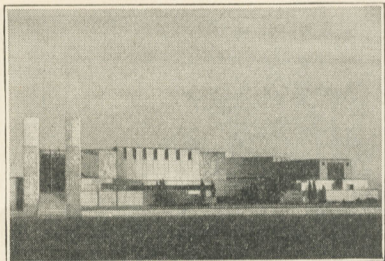
A CENTURY OF PROGRESS EXPOSITION presents to the world a group of exhibits the like of which has never before been seen.

It tells the *complete* story of human progress, chapter by chapter, told so simply, vividly and dramatically that all can see and understand.

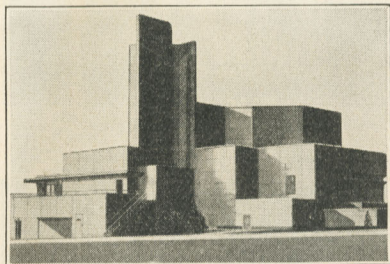
On its hundreds of acres of land are built marvelous exhibition buildings—into every one of which has gone the skill, thought and achievements of men and women who have spent their lives in producing those things that make the world a more pleasant and desirable place in which to live.



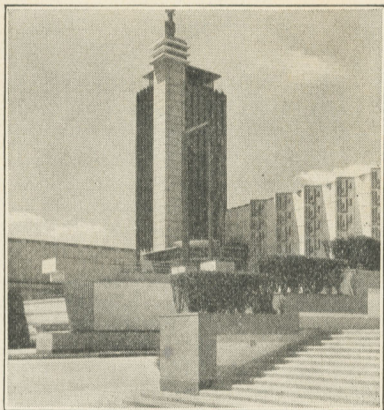
Government Building



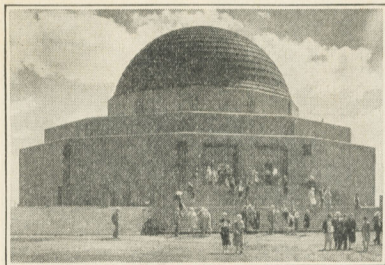
Electrical Building Group



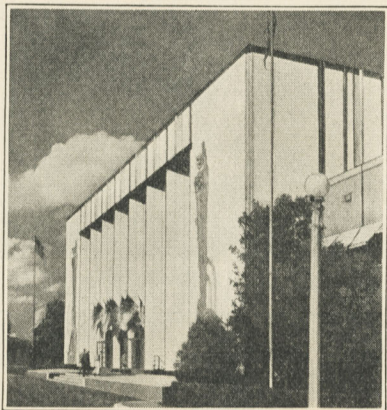
Dairy Building



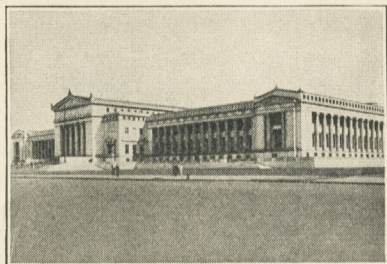
Carillon Tower



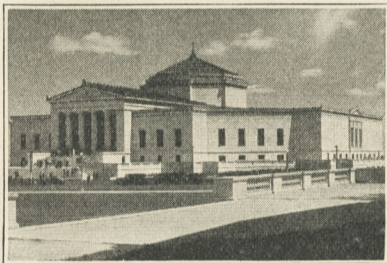
Adler Planetarium



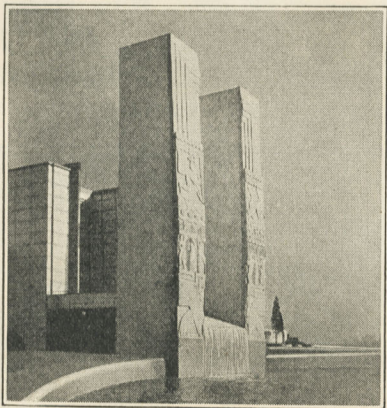
Administration Building



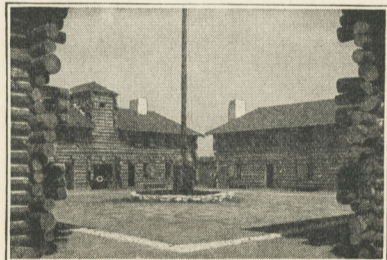
Field Museum



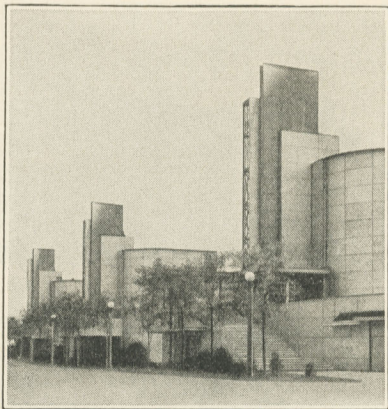
Shedd Aquarium



"Water Gate" Electrical Group



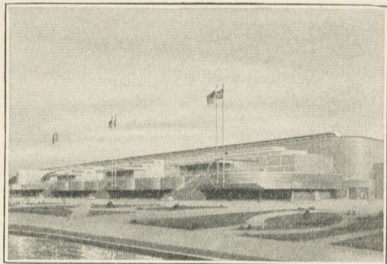
Fort Dearborn



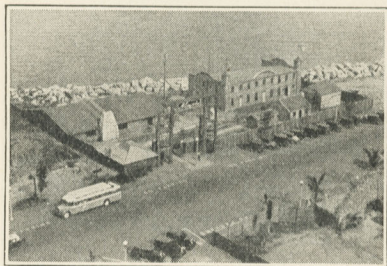
General Exhibits Group



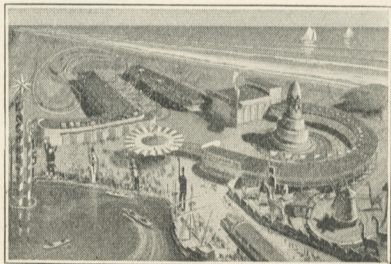
Hall of Science



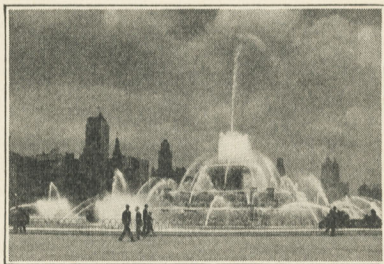
Agricultural Group



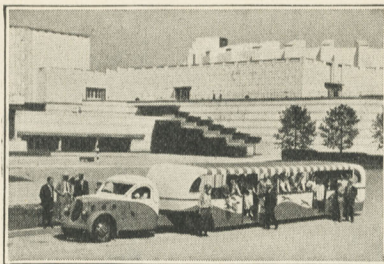
Abraham Lincoln Group



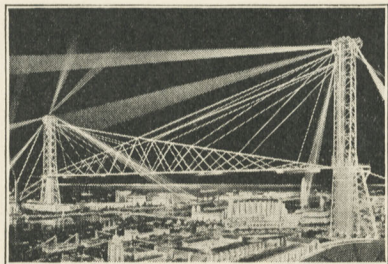
Enchanted Island



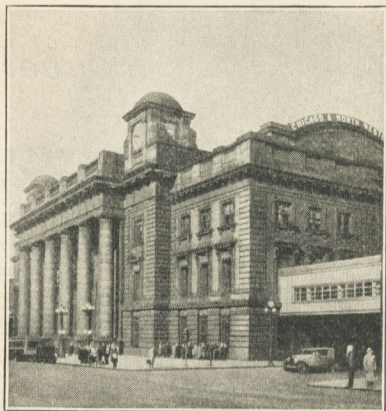
Buckingham Fountain



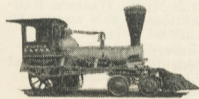
Sight-Seeing Bus



Sky Ride



*Chicago Passenger Station
Chicago & North Western Railway*



*The Pioneer—1848
Chicago's First Locomotive*



*Latest Type
Engine—1933
Chicago & North Western Railway*



*A
Symbol
of*

**FAST FREIGHT SERVICE
EXPERT FREIGHT HANDLING
ON-TIME DELIVERIES
QUICK RECONSIGNMENTS**

THE Chicago & North Western Railway has never been content to let well enough alone.

Improvements are constantly going on. What can be done to better the service? How can freight be speeded up? Perishables handled more efficiently? Reconsignments effected more quickly? Questions such as these are constantly being asked and answered. Today "North Western" is in better position to serve the freight requirements of the nation than ever before in its history

and here are some of the reasons:

Proviso Yard—World's Largest Freight Yard

Adjacent to Chicago. Insures handling of through traffic with utmost efficiency.

Wells Street Freight Station (Merchandise Mart)

Wells, Kinzie and Ferry Streets, Chicago

Built under the world's largest building. Ideally located for shippers and receivers.

Wood Street Terminal Potato and Vegetable Yard

Largest and most modern yard in the world for handling potatoes and vegetables.

Other Team Tract Facilities

Numerous team tracks, conveniently located in the north, west and south sides of the Chicago district, allow the Chicago & North Western Railway to offer adequate facilities of this nature to shippers and receivers of carload freight.

Chicago & North Western Railway Express Terminal

This new terminal speeds up the handling of express shipments in the Chicago district.

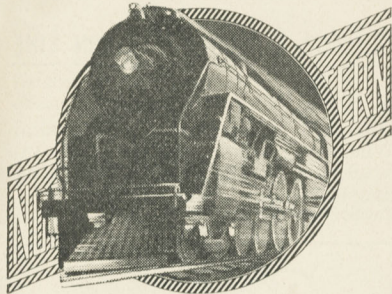
Class "H" Locomotives

Giant locomotives—there are 35 of them. They help to speed up service—to bring freight through on time.

A more satisfactory solution of many of your freight problems will be found in "North Western" service. You will find it modern, fast, efficient and complete. We are eager to serve you!

S. F. MILLER, Freight Traffic Manager
400 W. Madison St., Chicago

**CHICAGO &
NORTH WESTERN
RAILWAY**
"SHIP BY RAIL"



A Famous Fleet of Fine Fast Trains

SAN FRANCISCO-OVERLAND LIMITED

Chicago-San Francisco

LOS ANGELES LIMITED

Chicago-Los Angeles

THE PORTLAND ROSE

Chicago-Portland-Seattle

PACIFIC LIMITED

Chicago-Los Angeles-San Francisco-Portland-Seattle

THE SOO DOMINION

Chicago-St. Paul-Banff-Vancouver

MOUNTAIN BLUEBIRD THE COLUMBINE

Chicago-Denver Chicago-Denver

NORTH WESTERN LIMITED

Chicago-Milwaukee-St. Paul-Minneapolis

THE VICTORY

Chicago-St. Paul-Minneapolis

CORN KING LIMITED

Chicago-Omaha-Sioux City

DULUTH-SUPERIOR LIMITED

Chicago-Duluth-Superior

THE VIKING

Chicago-St. Paul-Minneapolis

ROCHESTER-MINNESOTA SPECIAL

Chicago-Milwaukee-La Crosse-

Winona-Rochester

THE NORTH AMERICAN

Omaha-Sioux City-St. Paul-Minneapolis

THE NIGHTINGALE

Omaha-Sioux City-St. Paul-Minneapolis

THE MONDAMIN

Omaha-Sioux City-St. Paul-Minneapolis

For information apply to any ticket agent, or address

R. THOMSON, P. T. M., C. & N. W. Ry.,

Chicago, Ill.

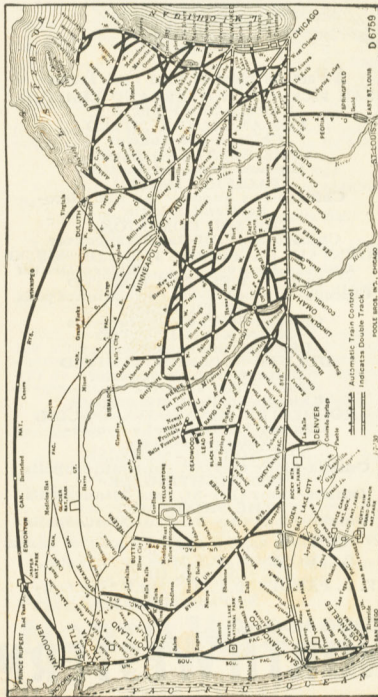
E. L. PARDEE, P. T. M., C. St. P. M. & O. Ry.,

St. Paul, Minn.

**CHICAGO &
NORTH WESTERN
LINE**

CHICAGO & NORTH WESTERN LINE

is the direct route providing unequaled service to and from important points in Illinois, Minnesota, Nebraska, Wisconsin, Iowa, South Dakota, Michigan, North Dakota, Wyoming Also to Colorado, Utah, Idaho, California, Pacific Northwest and the National Parks



MAP OF CHICAGO & NORTH WESTERN LINE AND CONNECTIONS TO THE PACIFIC COAST



AGENCIES

- | | |
|-----------------------|--|
| CHICAGO, ILL. | 137 So. La Salle St. |
| | Passenger Station, Madison & Canal Sts. |
| ATLANTA, GA. | 614 Volunteer Bldg. |
| BOSTON, MASS. | 294 Washington St. |
| BUFFALO, N. Y. | 295 Main St. |
| CEDAR RAPIDS, IOWA | 326 First Ave., N. E. |
| CINCINNATI, OHIO | 49 E. Fourth St. |
| CLEVELAND, OHIO | 1106 Terminal Tower Bldg. |
| COUNCIL BLUFFS, IOWA | |
| | Broadway Passenger Sta., 11th & Broadway |
| DALLAS, TEXAS | 1103 Southwestern Life Bldg. |
| DENVER, COLO. | 17th & Welton Sts. |
| DES MOINES, IOWA | 619 Locust St. |
| DETROIT, MICH. | 131 LaFayette Blvd. |
| DULUTH, MINN. | 424 W. Superior St. |
| GREEN BAY, WIS. | 300 Dousman St. |
| INDIANAPOLIS, IND. | 308 Merchants Bank Bldg. |
| KANSAS CITY, MO. | 119 Railway Exchange Bldg. |
| LINCOLN, NEB. | 130 So. 13th St. |
| LOS ANGELES, CALIF. | 601 So. Hill St. |
| MADISON, WIS. | 201 So. Blair St. |
| MILWAUKEE, WIS. | 231 E. Wisconsin Ave. |
| MINNEAPOLIS, MINN. | Marquette Ave. at 7th |
| NEW ORLEANS, LA. | 930 Ibbernia Bank Bldg. |
| NEW YORK, N. Y. | Room 322, 500 Fifth Ave. |
| OMAHA, NEB. | 1423 Farnam St. |
| | 814 Brandels Theatre Bldg. |
| PEORIA, ILL. | 200-208 So. Jefferson St. |
| PHILADELPHIA, PA. | 1400 So. Penn Square |
| PITTSBURGH, PA. | 535 Smithfield St. |
| PORTLAND, ORE. | 321 S. W. Washington St. |
| RAPID CITY, S. D. | Alex Johnson Hotel |
| ROCHESTER, MINN. | The Kahler |
| ST. LOUIS, MO. | 314 No. Broadway |
| ST. PAUL, MINN. | 81 E. 5th St. (Cor. Minnesota St.) |
| SALT LAKE CITY, UTAH | 10 So. Main St. |
| SAN FRANCISCO, CALIF. | 681 Market St. |
| SEATTLE, WASH. | 4th Ave. & Union St. |
| SIOUX CITY, IOWA | 522 Nebraska St. |
| SIOUX FALLS, S. D. | 424 E. Eighth St. |
| SPOKANE, WASH. | 615 Old National Bank Bldg. |
| TACOMA, WASH. | 608 Tacoma Bldg. |
| TULSA, OKLA. | 201 Cossden Bldg. |
| WINNIPEG, MAN. | 220 McIntyre Bldg. |
| WINONA, MINN. | 54 Center St. |

CHICAGO & NORTH WESTERN LINE

- | | |
|----------------------|------------------------|
| R. THOMSON, P. T. M. | E. L. PARDEE, P. T. M. |
| C. & N. W. Ry. | C. St. P. M. & O. Ry. |
| Chicago, Ill. | St. Paul, Minn. |

SOUVENIR
CHICAGO WORLD'S FAIR
1933



Compliments of

CHICAGO &
NORTH WESTERN
RAILWAY