

*PICTORIAL STORY*  
*of the*

**“GENERAL”**

**On Exhibit In Union Station  
CHATTANOOGA, TENNESSEE**



*FAMOUS MOCCASIN BEND  
FROM LOOKOUT MOUNTAIN*



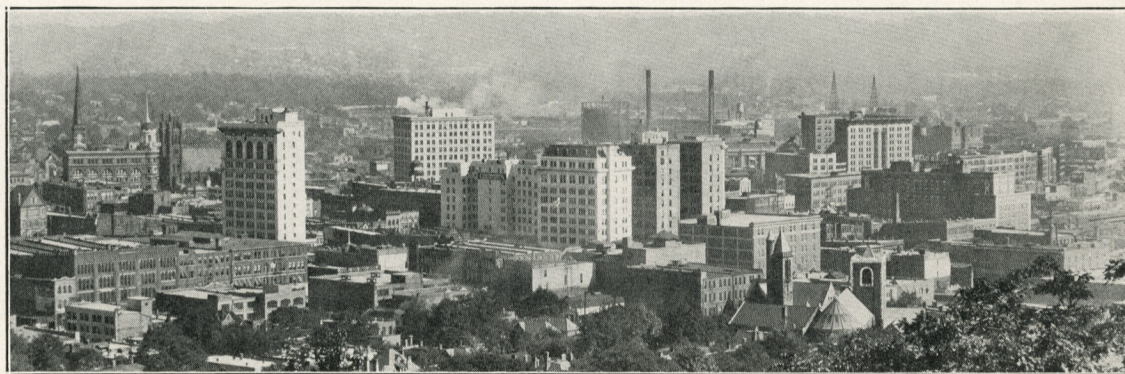
# Brief History of the "GENERAL"

Now on Exhibit in Union Station  
Chattanooga, Tennessee

THE story of the "General," or Andrews' Raid, is a story of heroism among soldiers of both North and South during the Civil War. The raid was of small military importance to either army, but we could search far before finding a story of greater human daring. Andrews and his men risked their lives, and some of them lost; Fuller and his Confederates risked theirs to better advantage, but there was no fear or holding back on either side.

The raid took place near Chattanooga—to the south on the Western and Atlantic and the Georgia State Railroads, at a time when Chattanooga's existence as a Confederate post was being threatened by Mitchel's Union army. It was apparent to Andrews, a Federal soldier who conceived and carried out the raid, that Chattanooga could be quickly re-enforced by Confederate troops coming up from Atlanta over the Georgia State and Atlantic and Western Railroads. His plan was to render these lines useless, and it was bold in conception and execution.

Andrews encountered daring equal to his own after crossing the Confederate lines, and the struggle which followed forms a thrilling and interesting chapter in our history.



Skyline of business section of Chattanooga—a city of 153,336 population.



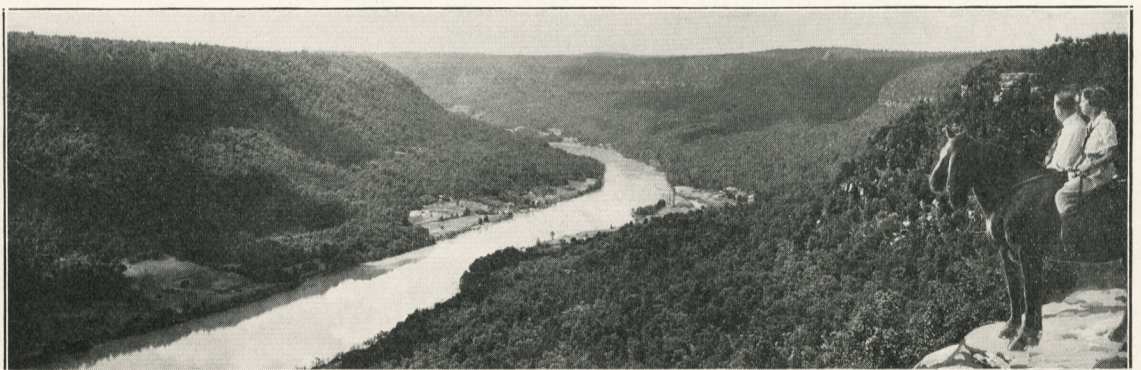
Today the "General," the locomotive which played a leading role in the raid, stands in the Union Station in Chattanooga. Nothing on it has been changed except the painting necessary to its preservation. The tender is stacked with cord wood which served for fuel in locomotives of that day. The huge smoke stack, the driver's wooden cab, the brass trimming and name plate, the hand brakes and the primitive couplers are all as they were on April 12, 1862, the day of the raid.

Chattanooga abounds in relics and memorials of those historic days, for Lookout Mountain, Signal Mountain, Missionary Ridge, Orchard Knob and Cameron Hill were all points of great military importance. Monuments and tablets throughout the city locate the Confederate defenses and the points of attack.

The country surrounding the city is well marked with tablets explaining the struggles which took place—seven miles southeast of the city is the vast Government owned Chickamauga Park, memorializing a major battle of the Civil War which took place on this historic ground.

Chattanooga, however, is not living in her past, glorious as it is, but has exchanged her position of military importance for one of industrial supremacy. Since the Civil War, Chattanooga has grown rapidly until today it occupies a position of leadership in Southern business and industrial life.

Over 1,500 different items are manufactured in the city, many of which are exported to all parts of the world. Thousands of tourists come to Chattanooga to enjoy the unsurpassed scenic and historic surroundings. Scores of meetings and conventions are held here each year. Permanent population is rapidly increasing—in fact, Chattanooga, year in and year out, shows steady growth along all lines.



The Grand Canyon of the Tennessee — One of the Amazing Views From Signal Mountain.



# Pictorial Story of the "GENERAL"

on Exhibit in Union Station  
Chattanooga, Tennessee

*Published by*

Chattanooga  
Community Advertising Association

*Through the Courtesy of*

McCLURE NEWSPAPER SYNDICATE

*Drawings by*

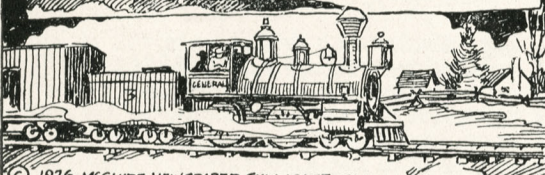
J. Carroll Mansfield



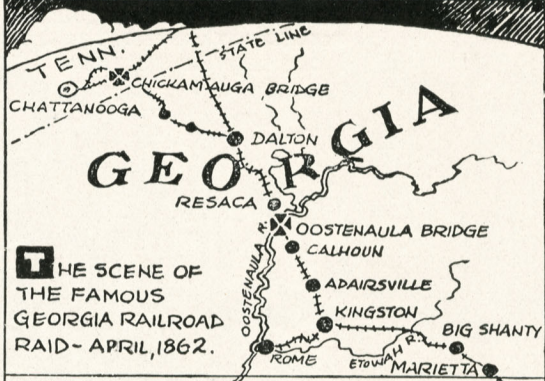
# PICTORIAL STORY OF THE "GENERAL" ON EXHIBIT IN UNION STATION CHATTANOOGA, TENNESSEE

11-15

**T**HE STORY OF THE GEORGIA RAILROAD RAID, WHICH OCCURRED IN THE SPRING OF 1862, IS ONE OF THE MOST NOVEL AND THRILLING CHAPTERS OF OUR CIVIL WAR. FROM A MILITARY VIEWPOINT THE RAID WAS OF NO GREAT IMPORTANCE, BUT IT STANDS OUT AS A STRIKING EXAMPLE OF WHAT HAZARDS MEN WILL DARE IN WARTIME FOR LOVE OF COUNTRY. AT THE TIME OF THE RAID, THE FEDERAL ARMIES OF GRANT AND BUELL WERE ADVANCING AGAINST THE CONFEDERATES AT CORINTH, MISSISSIPPI, AND IT WAS GENERALLY BELIEVED THAT IF SUCCESSFUL THERE THE FEDERALS WOULD NEXT STRIKE AT CHATTANOOGA, TENNESSEE.



© 1926, McCLURE NEWSPAPER SYNDICATE.



**T**HE SCENE OF THE FAMOUS GEORGIA RAILROAD RAID - APRIL, 1862.

**A** PART OF BUELL'S ARMY UNDER GEN. ORMSBY MITCHEL WAS THEN AT SHELBYVILLE, TENN. MITCHEL PLANNED TO INVADE THE EASTERN PART OF THE STATE, MOVE ON HUNTSVILLE, ALA., AND FROM THAT PLACE THREATEN CHATTANOOGA. CHATTANOOGA WAS AT THAT TIME WEAKLY DEFENDED, BUT COULD BE RE-ENFORCED READILY FROM ATLANTA OVER THE GEORGIA STATE RAILROAD.

MY PLAN, GENERAL, IS TO SECRETLY ENTER THE ENEMY'S LINES WITH A SMALL BODY OF MEN AND SEIZE A TRAIN ON THE GEORGIA STATE RAILROAD!

- AND THEN, WHAT?

**W**HILE MITCHEL WAS PREPARING TO MAKE THIS MOVEMENT, A FEDERAL SPY NAMED ANDREWS CAME TO HIM WITH A REQUEST FOR MEN TO ACCOMPANY HIM ON A DARING EXPEDITION. ANDREWS HAD DEVISED A SCHEME TO SEVER THE CONFEDERATE LINES OF COMMUNICATION SOUTH AND EAST OF CHATTANOOGA, AND HAD RECEIVED PERMISSION FROM BUELL'S CHIEF OF STAFF TO CARRY OUT HIS PERILOUS PROJECT.

WITH THE TRAIN IN OUR HANDS, WE'LL RUN NORTHWARD AND BURN THE BRIDGES BEHIND US - THUS CUTTING COMMUNICATION BETWEEN CHATTANOOGA AND ATLANTA!

HOW MANY MEN WILL YOU NEED?

**A**NDREWS UNFOLDED HIS PLAN, WHICH WAS TO BURN IMPORTANT BRIDGES ON THE GEORGIA STATE AND EAST TENNESSEE RAILROADS, TO GEN. MITCHEL, AND WAS AUTHORIZED BY THE LATTER TO TAKE TWENTY-FOUR MEN FOR HIS PURPOSE.

## CHATTANOOGA'S SPLENDID YEAR 'ROUND CLIMATE

The average annual temperature in Chattanooga is 61.4 degrees. Sunshine predominates the year around. The air coming down over the mountains is cool, pure and invigorating. Extreme cold or heat is rare. Tornadoes and severe storms are unknown.



# PICTORIAL STORY OF THE "GENERAL" ON EXHIBIT IN UNION STATION CHATTANOOGA, TENNESSEE



©, 1926, McCLURE NEWSPAPER SYNDICATE.

**T**HE TWENTY-FOUR MEN TO ACCOMPANY ANDREWS, THE FEDERAL SPY, ON HIS SECRET BRIDGE-BURNING EXPEDITION INTO GEORGIA WERE TAKEN FROM THE 2ND, 21ST AND 33RD OHIO REGIMENTS OF GENERAL SILL'S BRIGADE AND WERE AT FIRST IGNORANT OF THE NATURE OF THE HAZARDOUS UNDERTAKING THAT WAS BEFORE THEM.



**A**T SUNDOWN ON APRIL 7, 1862, THE MEMBERS OF THE RAIDING PARTY, DRESSED IN ROUGH CIVILIAN GARB AND ARMED ONLY WITH REVOLVERS, MET IN THE WOODS NEAR SHELBYVILLE, WHERE ANDREWS OUTLINED HIS DESPERATE PLAN AND GAVE THEM THEIR ORDERS.



**L**EAVING SHELBYVILLE, THE RAIDERS, TRAVELING AFOOT OVER ROADS SODDEN WITH RAIN, PASSED THE CONFEDERATE LINES ON VARIOUS PRETEXTS AND MADE THEIR WAY TO CHATTANOOGA, WHERE THEY WERE TO BOARD SOUTHBOUND TRAINS FOR MARIETTA AS ORDINARY PASSENGERS.



**A**S THE RAIN CONTINUED, ANDREWS BELIEVED THAT THE MUDDY ROADS WOULD DELAY THE ADVANCE OF MITCHEL'S ARMY UPON HUNTSVILLE, AND PASSED THE WORD AMONG HIS FOLLOWERS THAT THE ATTEMPT WOULD BE POSTPONED UNTIL SATURDAY, APRIL 12.

## CHATTANOOGA'S NUMEROUS DIVERSIFIED INDUSTRIES

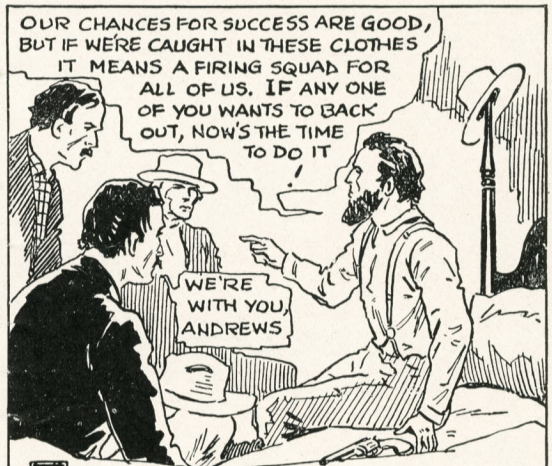
There are 400 manufacturing plants in Chattanooga making 1,500 different manufactured products. More than 100 of these products are regularly exported to foreign countries. Such diversity makes Chattanooga's prosperity stable.



# PICTORIAL STORY OF THE "GENERAL" ON EXHIBIT IN UNION STATION CHATTANOOGA, TENNESSEE



AT DAWN ON APRIL 12, 1862, THE DAY SET FOR ANDREWS' RAID UPON THE GEORGIA STATE RAILWAY, THE DISGUISED FEDERALERS QUIETLY MET IN THEIR LEADER'S ROOM AT THE MARIETTA HOTEL (MARIETTA, GEORGIA), FOR THEIR FINAL INSTRUCTIONS. OF THE 24 WHO HAD LEFT SHELBYVILLE, FOUR HAD BEEN DISCOVERED AND ARRESTED BY THE CONFEDERATES. TWO OF THESE, TO SAVE THEIR LIVES, JOINED THE SOUTHERN ARMY.



OUR CHANCES FOR SUCCESS ARE GOOD, BUT IF WE'RE CAUGHT IN THESE CLOTHES IT MEANS A FIRING SQUAD FOR ALL OF US. IF ANY ONE OF YOU WANTS TO BACK OUT, NOW'S THE TIME TO DO IT

WE'RE WITH YOU ANDREWS

THE PLAN WAS TO TAKE THE EARLY MORNING MAIL TRAIN FOR CHATTANOOGA AND TAKE POSSESSION OF IT AT BIG SHANTY, EIGHT MILES NORTH OF MARIETTA, WHEN THE PASSENGERS AND CREW LEFT THE CARS TO GET BREAKFAST.



THE DAY WAS RAINY AND GLOOMY. SHORTLY BEFORE TRAIN TIME, THE DISGUISED RAIDERS WENT DOWN TO THE DEPOT AND, IN ORDER NOT TO EXCITE SUSPICION, PURCHASED TICKETS FOR DIFFERENT POINTS ALONG THE LINE.



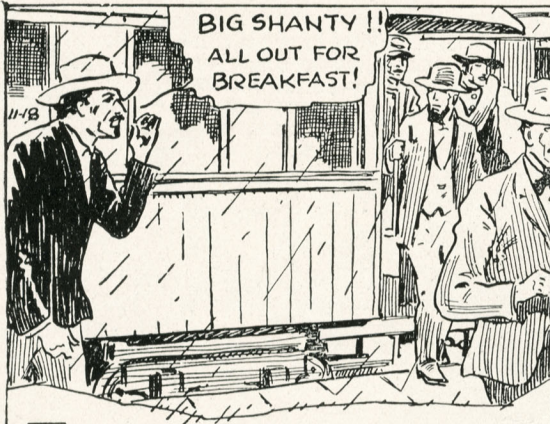
TO THEIR CHAGRIN, THE PLATFORM WAS CROWDED WITH CONFEDERATE SOLDIERS WAITING TO BOARD THE NORTHBOUND TRAIN, BUT EACH OF THE INTREPID LITTLE BAND REMAINED FIRM IN HIS DETERMINATION TO CARRY OUT HIS PART OF THE RASH PLAN OR DIE IN THE ATTEMPT.

## CHATTANOOGA'S HYDRO-ELECTRIC POWER DEVELOPMENT

*In the Chattanooga area 294,912 h. p. is developed, and permits applied for call for an additional 594,912 electric h. p. The Tennessee River offers excellent opportunity for the greatest hydro-electric development in the world, and rapid progress is being made on this work.*



# PICTORIAL STORY OF THE "GENERAL" ON EXHIBIT IN UNION STATION CHATTANOOGA, TENNESSEE



**W**HEN THE TRAIN BEARING THE DISGUISED UNION RAILROAD RAIDERS REACHED BIG SHANTY, THE PASSENGERS AND CREW ALIGHTED AND HURRIED OFF THROUGH THE DRIVING RAIN TO GET BREAKFAST, LEAVING THE TRAIN DESERTED. HERE WAS THE GOLDEN OPPORTUNITY FOR WHICH ANDREWS HAD PLANNED!



**I**NSTANTLY THE RAIDERS SPRANG INTO ACTION AND IN A FEW SECONDS THE PASSENGER COACHES ON THE REAR HAD BEEN UNCOUPLED FROM A FORWARD SECTION CONSISTING OF THE ENGINE, TENDER AND THREE EMPTY BOX CARS.



**A**NDREWS HAD SELECTED FOUR EXPERIENCED TRAINMEN TO TAKE PART IN THE RAID AND THESE, WITH THE LEADER, QUICKLY MOUNTED TO THE CAB OF THE LOCOMOTIVE, WHILE THE REMAINING MEMBERS OF THE BAND CLAMBERED INTO THE REAR BOX CAR.



**W**HEN ALL WERE ABOARD, ANDREWS GAVE THE SIGNAL AND THE TRAIN DARTED AWAY FROM THE STATION. THE MOVE WAS SO UNEXPECTED THAT THE FEW CONFEDERATES WHO WITNESSED THE SUDDEN DEPARTURE OF THE TRAIN WERE ROOTED TO THE SPOT WITH AMAZEMENT.

## CHATTANOOGA'S STRATEGIC GEOGRAPHICAL LOCATION

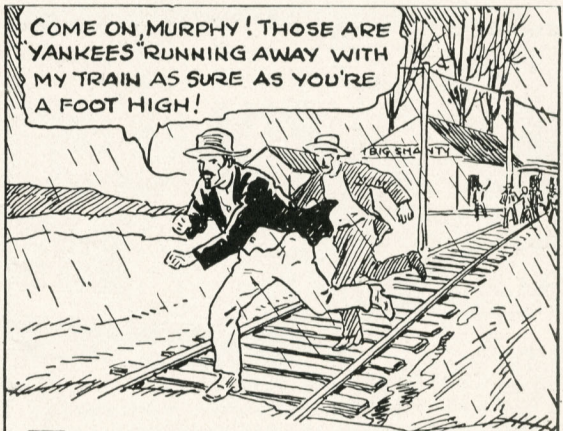
*Situated in southeastern Tennessee, Chattanooga is approximately in the center of the prosperous southern territory. Nine railroads, the Tennessee River and numerous improved highways, among them the Dixie and Lee Highways, make the city readily accessible for business or pleasure.*



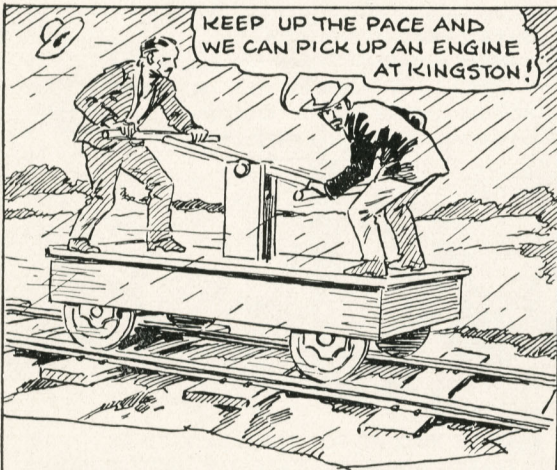
# PICTORIAL STORY OF THE "GENERAL" ON EXHIBIT IN UNION STATION CHATTANOOGA, TENNESSEE



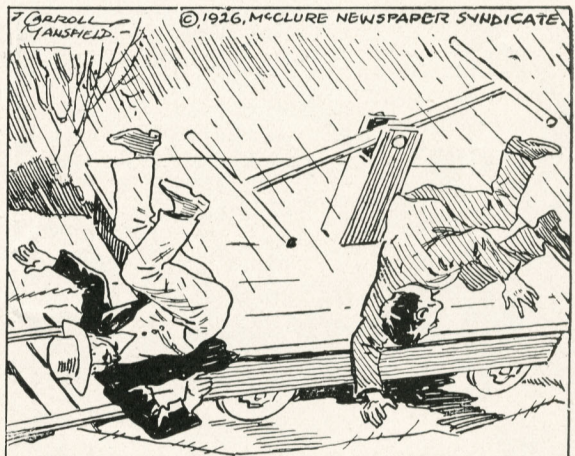
**A**FTER STEALING A LOCOMOTIVE AND THREE BAGGAGE CARS FROM THE CONFEDERATES AT BIG SHANTY (GA.), ANDREWS AND HIS UNION RAIDERS SPED AWAY TO THE NORTH ON THEIR BRIDGE-BURNING MISSION. THERE WAS NO TELEGRAPH STATION AND NO OTHER LOCOMOTIVE AT BIG SHANTY, SO FOR THE MOMENT NO PURSUIT WAS FEARED. AS THEY NEARED ETOWAH STATION, HOWEVER, THEY STOPPED, CUT THE WIRE AND LOOSENED A RAIL BEHIND THEM.



**T**HE UNEXPECTED THEFT OF THE TRAIN HAD BEWILDERED MOST OF THE CONFEDERATES LEFT BEHIND AT BIG SHANTY, BUT TWO MEN DIVINED THE TRUE SITUATION AND STARTED IN PURSUIT ON FOOT. THESE WERE FULLER, THE CONDUCTOR, AND MURPHY, ANOTHER RAILROAD EMPLOYEE.



**B**EFORE THEY HAD GONE FAR, FULLER AND MURPHY FOUND A HAND CAR BESIDE THE TRACKS AND, MOUNTING IT ON THE RAILS TOOK UP THE CHASE AT A FAIR RATE OF SPEED.



**S**UDDENLY, AND WITHOUT WARNING, THE HANDCAR STRUCK A PLACE IN THE TRACKS WHERE THE RAIDERS HAD LOOSENED A RAIL AND THE TWO PURSUERS WERE THROWN INTO A DITCH.

## CHATTANOOGA'S YEAR 'ROUND MOUNTAIN RESORTS

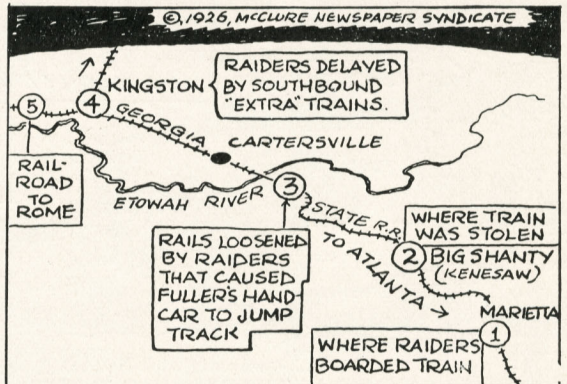
Lookout Mountain and Signal Mountain are both three miles from the heart of the city. They are reached by concrete roads or by electric cars, have modern hotels, excellent golf courses and every recreational facility, and, are world-famous as year-around resorts.



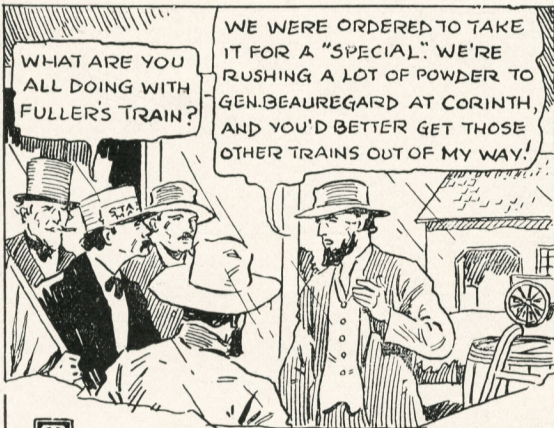
# PICTORIAL STORY OF THE "GENERAL" ON EXHIBIT IN UNION STATION CHATTANOOGA, TENNESSEE



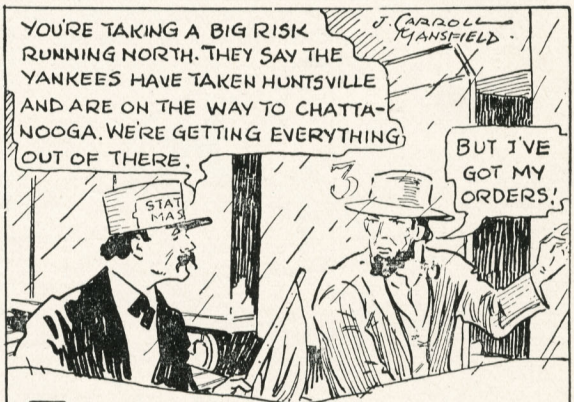
**U**NDAUNTED BY THE DERAILING OF THEIR HANDCAR, FULLER AND MURPHY, PURSUING THE STOLEN TRAIN ON WHICH ANDREWS AND HIS UNION RAIDERS WERE SPEEDING NORTHWARD ALONG THE GEORGIA STATE RAILWAY, RESUMED THE CHASE AND AT ETOWAH STATION FOUND A LOCOMOTIVE, STANDING WITH STEAM UP ON A SIDE-TRACK. THIS THEY COMMANDEERED AND, TAKING ON A NUMBER OF CONFEDERATE SOLDIERS WHO WERE AT HAND, PRESSED ON TOWARD KINGSTON.



**M**EANWHILE THE RAIDERS HAD REACHED KINGSTON, WHERE THE RAILROAD FROM ROME JOINED THE MAIN LINE, AND FOUND TO THEIR DISMAY THAT THE TRACK WAS BLOCKED BY A TANGLE OF TRAINS. A "SPECIAL" WAS EXPECTED FROM THE NORTH AND, AS THE LINE HAD BUT A SINGLE TRACK, THE RAIDERS WERE FORCED TO WAIT UNTIL IT ARRIVED.



**T**HE CURIOSITY OF THE CROWD AT KINGSTON WAS AROUSED BY THE SIGHT OF STRANGERS MANNING "FULLER'S MAIL TRAIN" AND THEIR INQUISITIVENESS CAUSED THE DISGUISED FEDERALS MUCH APPREHENSION. ANDREWS, HOWEVER, PUT ON A BOLD FRONT AND TOLD A STORY WHICH SEEMED TO SATISFY HIS QUESTIONERS.



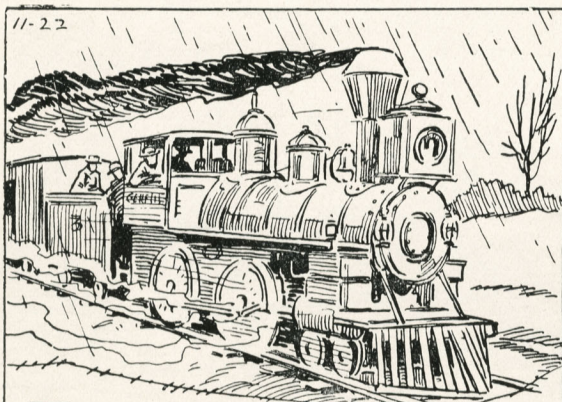
**W**HILE WAITING FOR THE TRACK TO BE CLEARED, ANDREWS HEARD THE DISTURBING NEWS THAT THE UNION ARMY HAD REACHED HUNTSVILLE A DAY SOONER THAN HE HAD EXPECTED AND THAT THE SINGLE TRACK LEADING TO THE NORTH WAS CROWDED WITH CONFEDERATE FREIGHT AND PASSENGER TRAINS FLEEING FROM CHATTANOOGA.

## CHATTANOOGA'S FINE EDUCATIONAL FACILITIES

Thirty-four public and nine private schools, and the University of Chattanooga provide unusual opportunity for elementary, preparatory and advanced education. Soldiers and Sailors Memorial Auditorium, with a seating capacity of 5,500, ranks as one of the three greatest auditoriums in America.



# PICTORIAL STORY OF THE "GENERAL" ON EXHIBIT IN UNION STATION CHATTANOOGA, TENNESSEE



**A**NDREWS AND HIS UNION RAIDERS WERE FORCED TO WAIT AT KINGSTON JUNCTION MORE THAN AN HOUR FOR THE ARRIVAL OF SOUTHBOUND CONFEDERATE "EXTRA" TRAINS OVER THE SINGLE TRACK. FINALLY, THE TRACK WAS CLEAR AND SOON THE STOLEN TRAIN WAS RUSHING NORTHWARD. THE RAIDERS HAD COVERED 30 MILES, BUT 70 MORE LAY AHEAD OF THEM THROUGH THE ENEMY'S COUNTRY.



**A**RRIVING AT KINGSTON, FULLER FOUND HIS PREY HAD JUST LEFT. THE JUNCTION WAS STILL BLOCKED WITH TRAINS AND THERE WAS NO TIME TO SHIFT THEM. HURRYING TO THE HEAD OF THE TIE-UP, FULLER SAW A TRAIN STANDING ON THE BRANCH LINE THAT LED TO ROME. UNCOUPLING THE ENGINE AND ONE CAR THE PURSUERS, NOW FORTY STRONG, SWUNG ABOARD. THE STOLEN TRAIN WAS NOT MANY MINUTES AHEAD.



**F**OUR MILES BEYOND KINGSTON, THE FEDERAL RAIDERS STOPPED AGAIN TO CUT THE TELEGRAPH WIRE AND TAKE UP A RAIL. HARDLY HAD THIS BEEN DONE, WHEN THEY HEARD THE DISTANT SCREAM OF A LOCOMOTIVE WHISTLE BEHIND THEM.



**W**HEN FULLER REACHED THE BREAK IN THE TRACKS, HE WAS FORCED TO ABANDON HIS ENGINE AND TAKE UP THE CHASE ON FOOT. NEAR ADAIRSVILLE HE MET A SOUTHBOUND TRAIN. THIS HE COMMANDEERED AND, DROPPING THE CARS, DROVE NORTHWARD AT THE GREATEST POSSIBLE SPEED.

## CHATTANOOGA'S PARKS AND BATTLEFIELDS

Nearly 6,000 acres of beautiful parks in and around Chattanooga add their charm to the natural beauty of the city's location. Chickamauga Park has 102 miles of improved roads, and is a highly interesting Civil War memorial. Orchard Knob and many other parks are both historically interesting and enjoyable recreational spots.



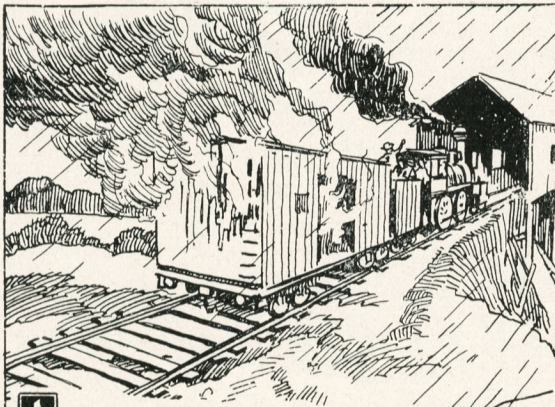
# PICTORIAL STORY OF THE "GENERAL" ON EXHIBIT IN UNION STATION CHATTANOOGA, TENNESSEE



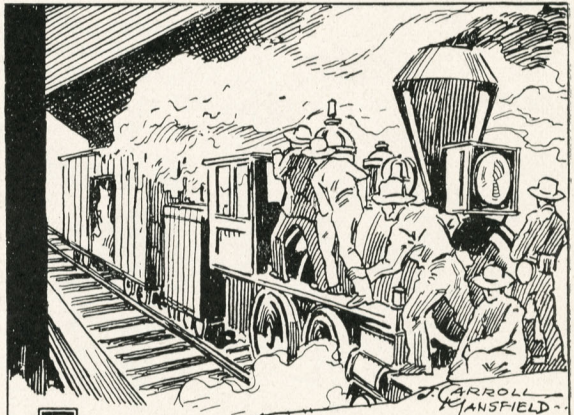
**B**EFORE LONG, THE PURSUING CONFEDERATES CAME IN SIGHT OF THE STOLEN TRAIN AND A DESPERATE RACE BEGAN. THE PURSUERS WERE UNABLE TO OVERTAKE THE RAIDERS ON THE ROAD, BUT TRIED TO KEEP CLOSE BEHIND, SO THAT THE FEDERALS WOULD NOT HAVE TIME TO STOP TO DAMAGE THE TRACK. MILE AFTER MILE FLEW BY WHILE BOTH ENGINES SPED ALONG AT A DANGEROUS PACE.



**F**UEL AND WATER WERE RUNNING LOW ON THE STOLEN TRAIN. TWO OF THE BOX CARS HAD BEEN LEFT BEHIND IN THE HOPE THAT THE CONFEDERATES WOULD CRASH INTO THEM. BUT THE PURSUERS SAW THEIR DANGER IN TIME AND, SLACKENING THEIR SPEED, "PICKED UP" THE ABANDONED CARS AND PUSHED THEM AHEAD TO THE NEXT SIDING.



**A**S THEY NEARED A LONG, COVERED TRESTLE SPANNING CHICKAMAUGA CREEK, WHICH OFFERED THEIR LAST CHANCE OF DOING SERIOUS DAMAGE TO THE LINE, THE RAIDERS SET AFIRE THE REMAINING BOX CAR, AND UNCOUPLED IT WHEN THE MIDDLE OF THE BRIDGE WAS REACHED. THEN THEY SPED AWAY TO THE NORTH, HOPING THEY WERE FREE FROM PURSUIT AT LAST.



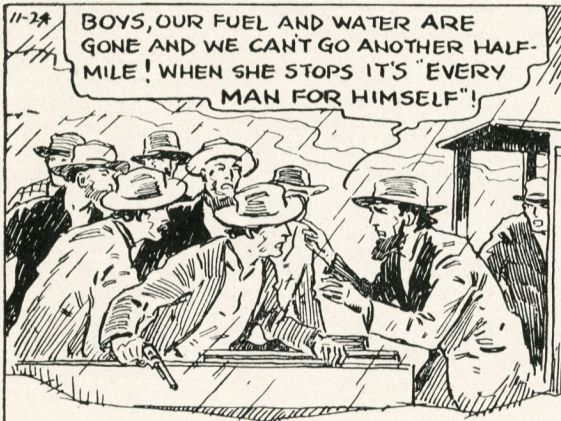
**J**UST WHEN FORTUNE SEEMED TO SMILE UPON THE UNION BRIDGE-BURNERS, THE CONFEDERATES APPEARED. TAKING IN THE SITUATION AT A GLANCE, THE PURSUERS DROVE FORWARD BOLDLY THROUGH THE BLINDING SMOKE AND PUSHED THE BLAZING CAR FROM THE STRUCTURE BEFORE THE FLAMES HAD BEGUN THEIR WORK OF DESTRUCTION.

## CHATTANOOGA'S PUBLIC UTILITY FACILITIES

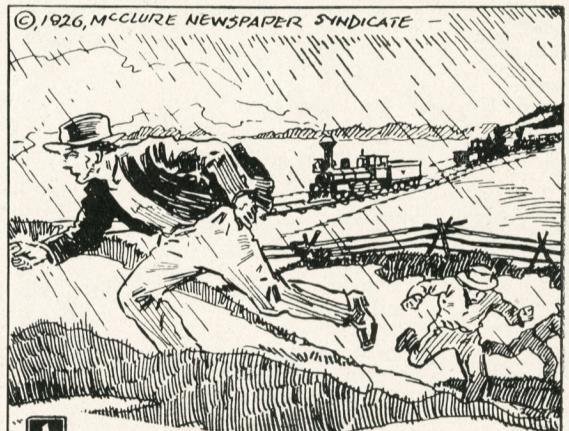
Chattanooga has 22,152 telephones handling 210,128 calls per day, an increase of 100 per cent in ten years. There are 29,773 electric meters in service and 151 miles of gas mains serving 8,500 meters. The street railway operates over 96 miles of track and carries over 17,800,000 passengers per year.



# PICTORIAL STORY OF THE "GENERAL" ON EXHIBIT IN UNION STATION CHATTANOOGA, TENNESSEE



**F**AILING TO BURN THE CHICKAMAUGA BRIDGE, AND WITH THEIR PURSUERS AT THEIR HEELS, THE HOPES OF THE UNION RAILROAD RAIDERS FADED. THE LAST OF THE FUEL AND WATER HAD BEEN CONSUMED AND THEY DECIDED TO ABANDON THE ENGINE AND ATTEMPT TO REACH THE FEDERAL LINES ON FOOT.



**A**S THE WHEEZING LOCOMOTIVE SLOWED DOWN, THE RAIDERS JUMPED OFF AND SCATTERED IN ALL DIRECTIONS. BEFORE THEY DISPERSED, THE "IRON HORSE" WHICH HAD CARRIED THEM ON THEIR WILD RIDE WAS SENT RUNNING BACKWARD IN A LAST EFFORT TO WRECK THE TRAINS THAT WERE SPEEDING AFTER THEM



**B**UT THERE WAS NOT ENOUGH STEAM LEFT TO DRIVE THE STOLEN LOCOMOTIVE WITH DEADLY SPEED INTO THE PURSUERS. BY REVERSING THEIR ENGINE, THE CONFEDERATES BROKE THE FORCE OF THE IMPACT AND, LEAPING FROM THE CARS, STARTED ON FOOT AFTER THE FUGITIVES.



**T**HE PURSUIT WAS ENERGETIC, RELENTLESS AND SUCCESSFUL. WITHIN A WEEK ALL OF THE RAIDERS WERE CAPTURED, INCLUDING TWO WHO HAD LEFT SHELBYVILLE WITH ANDREWS, BUT HAD NOT TAKEN PART IN THE RAID.

## CHATTANOOGA'S CITY AND TRADING AREA POPULATION

The population of Chattanooga is predominately of Anglo-Saxon origin. There are 153,336 people in the public utility area, with the factories employing 36,000 and paying them \$42,000,000 annually in wages. 1,440,000 persons live within a 100-mile radius of the city of Chattanooga.



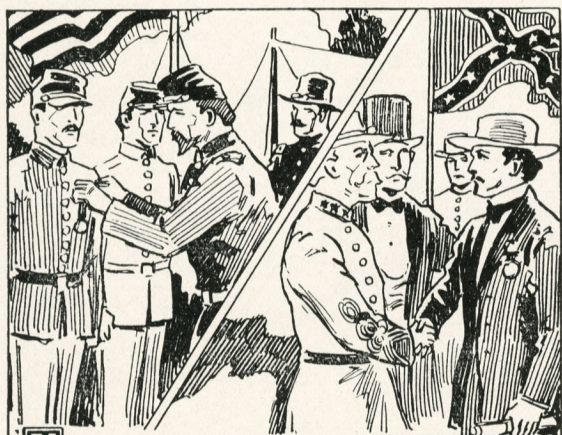
# PICTORIAL STORY OF THE "GENERAL" ON EXHIBIT IN UNION STATION CHATTANOOGA, TENNESSEE



**F**OLLOWING THE FAILURE OF THE RAILROAD RAID AND THEIR CAPTURE IN CIVILIAN DRESS WITHIN THE CONFEDERATE LINES, ALL OF THE RAIDERS WERE HELD AS SPIES. ANDREWS AND SEVEN OF HIS FOLLOWERS WERE TRIED, CONDEMNED AND EXECUTED.



**T**HE FOURTEEN REMAINING MEMBERS OF ANDREWS' BAND WERE NOT BROUGHT TO TRIAL, BUT CONFINED IN A CONFEDERATE PRISON. EIGHT OF THEM SUCCEEDED IN OVERPOWERING THEIR GUARDS AND ESCAPED TO THE UNION LINES. THE REST WERE LATER EXCHANGED.



**U**PON RETURNING TO THEIR REGIMENTS, THE SURVIVORS OF THE ILL-FATED RAILROAD RAID RECEIVED PROMOTION AND DECORATIONS FOR THEIR SERVICES. FULLER AND THE CONFEDERATES WHO PARTICIPATED IN THE PURSUIT WERE GIVEN SIMILAR RECOGNITION BY THEIR GOVERNMENT AND THE STATE OF GEORGIA.



**J**AMES ANDREWS, THE DARING SPY WHO PLANNED AND LED THE RAILROAD RAID —

**W**ILLIAM FULLER, THE BRAVE CONDUCTOR WHO LED THE PURSUIT.

**T**HE LOSS OF LIFE ON THIS EXPEDITION WAS LAMENTED IN THE NORTH, THOUGH THE FAILURE OF THE RAID ITSELF WAS OF LITTLE MOMENT. GEN. BUELL SAID OF THE RAID, THAT THE BRIDGE-BURNERS TOOK DESPERATE CHANCES TO ACCOMPLISH RESULTS THAT COULD ONLY HAVE BEEN PARTIAL AND TEMPORARY.

## CHATTANOOGA'S CONVENTION ATTRACTIONS AND FACILITIES

Chattanooga is one of the most popular convention cities in the country due to central location, easy accessibility by rail and highway, fine hotels and the unsurpassed facilities afforded by her Memorial Auditorium which has been declared to be one of the three greatest auditoriums in America. The wonderful scenic and historic attractions of the city, as well as the diversity of manufacture, afford splendid recreational and entertainment features for convention delegates.



# Facts About Chattanooga

## *The Scenic, Historic and Industrial Center of the South*

Chattanooga is indeed an unusual city, possessing many exceptional advantages, each sufficiently important to assure continuous growth and prosperity; her assets are not limited along any line, but are numerous and well rounded as shown by this summary:

### **1. Scenic and Historic Attractions**

Chattanooga's valley and mountain scenery is unsurpassed in all America for variety, extent and grandeur. Amazing views and impressive panoramas at every hand. Practically every foot of land in and about the city is rich in historic associations.

### **2. Ideal Convention Facilities**

Chattanooga's natural attractions offer most appealing inducements to conventions, for there is something to see and do every moment in this interesting city. A magnificent Memorial Auditorium and splendid hotels provide excellent accommodations for meetings of any size.

### **3. Many Resort Attractions**

In addition to excellent downtown hotels, fine resort hotels are on both Lookout and Signal Mountains, near golf courses, tennis courts, swimming pools and other recreational facilities. These attractions, together with a moderate climate, make the city a highly popular resort center.

### **4. Unusual Residential Advantages**

It is a pleasure to live in Chattanooga, so picturesquely located amid scenic and historic environ-

ments. Wide diversity of industry assures continuous prosperity and affords excellent opportunities.

### **5. Great Manufacturing Center**

Chattanooga is one of the country's greatest industrial cities, with every advantage for economic, efficient production—raw materials, abundant labor, cheap hydro-electric power, moderate climate and excellent transportation.

### **6. Distributing Center**

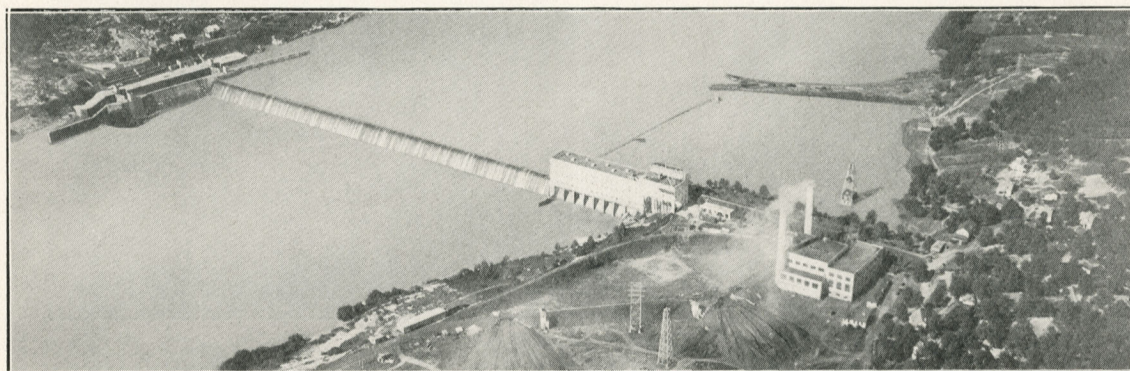
Being located in the very heart of the South, Chattanooga is rapidly becoming a foremost distributing center. Nine railroads, the Tennessee River and an excellent system of interstate highways place Chattanooga within easy reach of all southern and central markets and ports.

### **7. Serves Prosperous Trading Area**

Chattanooga has 1,440,000 population within an area of 100 miles. Her trading area embraces rich sections of East Tennessee, Alabama and Georgia. The buying power of the Chattanooga area is tremendous, and the prosperity of the section remains continuously undisturbed.

### **8. Many Agricultural Assets**

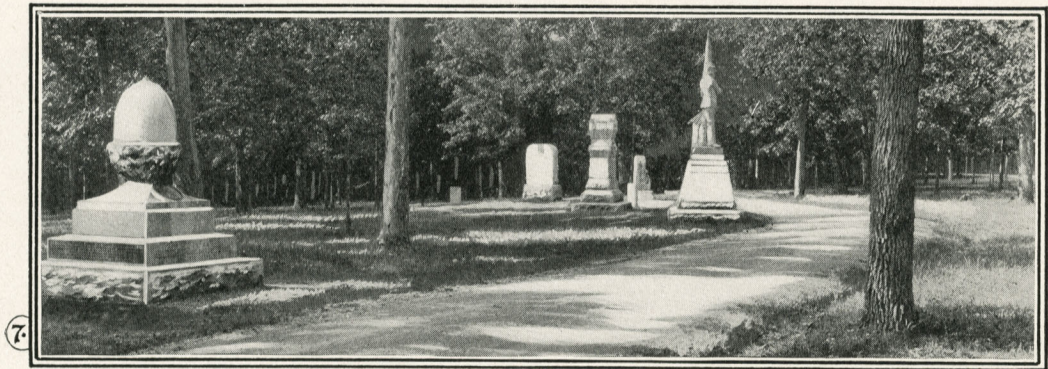
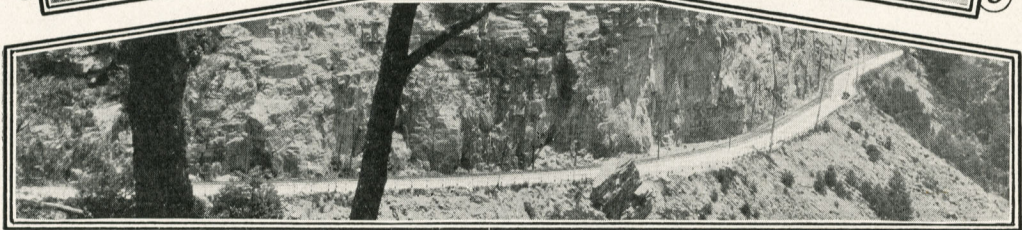
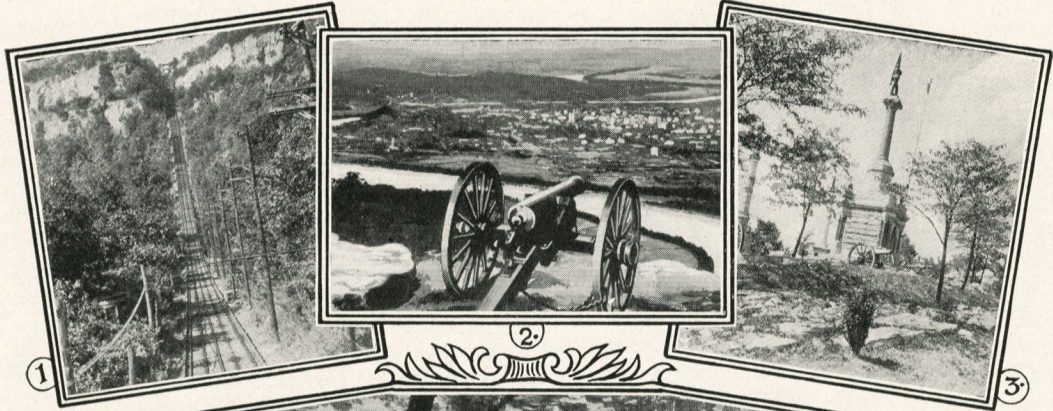
Chattanooga is so centrally located that truck farmers, dairymen, fruit growers, poultry raisers and other agriculturists are assured of splendid local and distant markets. The land is well adapted to many kinds of farming, and developments along this line are proceeding rapidly.



Hydro-electric development on Tennessee River near Chattanooga, the Dynamo of Dixie.



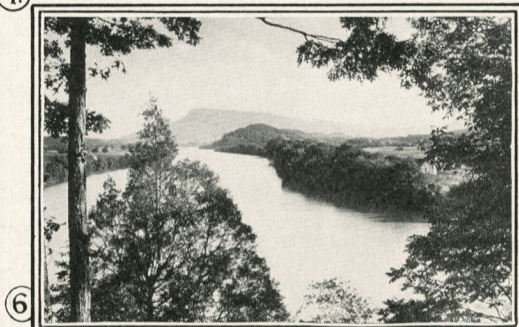
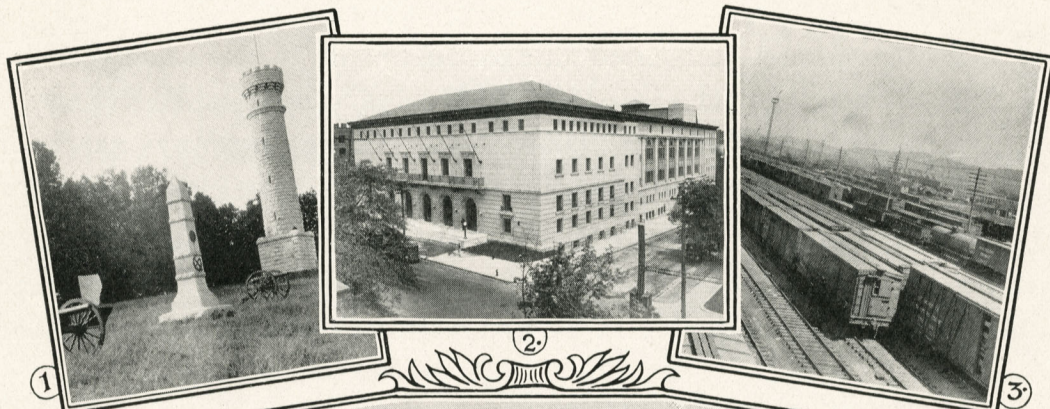
# Scenes in and Around Chattanooga



On these two pages are a few glimpses of Chattanooga's world-famed views. No. 1—Incline up Lookout Mountain. No. 2—View of Chattanooga from point on Lookout Mountain. No. 3—Scene in historic Orchard Knob. No. 4—Highway up picturesque Signal Mountain. No. 5—Part of business district. No. 6—Williams Island, Tennessee River, from Signal Mountain. No. 7—Historic highway through Chickamauga Battlefields.



# Scenes in and Around Chattanooga



No. 1—Famous Wilder's Monument in Chickamauga Battlefields. No. 2—Soldiers' and Sailors' Memorial Auditorium. No. 3—Excellent transportation facilities and strategic geographical location make Chattanooga an ideal southern distributing center. No. 4—Horseback riding along brow of Lookout Mountain. No. 5—Typical of Chattanooga's beautiful residential streets. No. 6—Tennessee River with Lookout Mountain in the distance. No. 7—One of Chattanooga's four excellent year 'round 18-hole golf courses.



# Chattanooga's Rapid Progress Assured

IT IS a nationally recognized fact that the South is now experiencing the greatest development of its history. New mills, new branches of national businesses, new mines, new railroad additions, new highways, new hydro-electric projects, are all combining to give the South this great industrial boom.

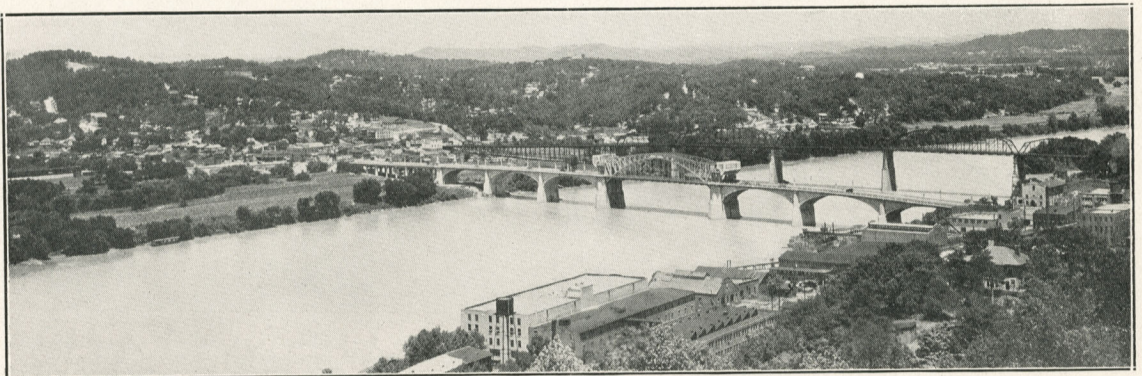
Chattanooga is so situated that it is receiving more than its share of this great development. Nine railroads, combined into a comprehensive system through a Terminal Railroad, are bringing in the natural resources found surprisingly near Chattanooga.

Chemicals, timber, coal, iron, limestone and cotton are plentiful and close at hand, and transportation rates are low. Water power is abundant, both actually and potentially, on the Tennessee River. Labor is plentiful and reasonable. Climate is temperate.

Everything combines to make Chattanooga an industrial location which should not be overlooked by business executives planning either a new location or enlarged activity in the South. Chattanooga is unsurpassed as a central distributing or manufacturing point for the Southern territory.

Chattanooga's future is assured because of these many natural advantages, and because its citizens are progressive and determined to keep the already earned title—"The Dynamo of Dixie."

The marked commercial and industrial advantages of the city are attracting new enterprises at a rapid rate.



Bridge over Tennessee River, one of the world's greatest potential sources of hydro-electric power.



# WHERE DIVERSITY DISPELS ADVERSITY

## CHATTANOOGA

Originates more goods for export than any city in the South, with 100 firms engaged in export business.

Eleven coal mines operating within 50-mile radius. Produces more hosiery than any city in the South, and ranks third in the United States.

Produces more boilers than any city in the South, and ranks second in the United States.

Is the largest mercerizing center in the South.

Leads the South in manufacture of woolen goods. Produces more plows than any other city in the South.

Produces more saw mill machinery than all of the rest of the South combined.

Produces more oil well machinery than any city in the United States.

Leads the United States in the manufacture of fireplace fixtures of all kinds.

Produces more smoothing irons than any other city in the United States.

First in the South, and second in the United States, in the manufacture of hay presses.

First in the United States in the manufacture of pea hulling machinery.

Has the largest gas range factory in the South.

Has the only shovel manufacturing plant in the South.

Ships tapestry brick into sixteen states, including five north of the Ohio River.

Makes more cedar chests than any other city in the South.

Is the largest producing center of morticians' supplies in the South.

Has only factory in the South making full line of fire hydrants, valves, and water works supplies.

Produces more patent medicines than any other city in the South.

Produces more refrigerators than any other city in the South, and ranks second in the United States.

Only city in South producing high-grade cotton linter pulp.

Municipal wharf, fully equipped with modern unloading and conveying equipment, and Belt Line rail connection with all railroads.

First American city to maintain large four-story Exhibit Building of manufactured goods. Adjoins Chamber of Commerce Building. Admission free.

Largest electric steel foundry in the South.

Pioneer electrical insulator manufacturing city of the South, and holds first place in production.

Is the only city in the South making ratchet drills.

Has the only factory in the world producing both the lumber and the paper and fabricating wooden, wirebound, corrugated fibre and folding boxes.

Principal Southern producer of sewer pipe (clay and iron).

Among its several candy factories, has largest in South.

Only Southern city making portable asphalt paving plants.

Is the only Southern city manufacturing a complete line of contractors' hoists and logging machinery.

Produces more porcelain enameled steel than entire South.

Is the fifth largest producer of commercial malleable castings in the United States. One Chattanooga plant produces more tonnage of malleable iron and steel castings than any foundry in the South or West.

Has only plant in South producing sulphate of alumina.

Is within easy transmission distance of Muscle Shoals—600,000 horsepower.

Consumes 1,200 tons pig iron per day. Makes 10,000 barrels cement per day.



Civil War cabin and cannons—typical scene in historic Chickamauga Park.



# TABLOID FACTS ABOUT CHATTANOOGA

"THE DYNAMO OF DIXIE"

Square Mile Area.....	16	Churches (White).....	124
Population Therein.....	98,421	Churches (Colored).....	76
Directory Census (1928), including		Miles of Street Railway.....	96
Suburbs.....	153,336	Twenty-seven Hotels (Rooms).....	2,381
Public School Enrollment.....	19,500	Auditorium Seats (Main Auditorium)	5,500
Bank Clearings.....	\$427,693,712	Picture Show Theatres.....	14
Bank Deposits.....	\$54,135,000	Principal Industry.....	M'nufactur'g
Post Office Receipts.....	\$801,157	Electric H. P. Developed.....	294,912
Estimated Value for Taxation Pur-		Electric H. P. (Permits Applied for)...	594,912
poses:		Coal Mines Within Fifty Miles.....	11
City.....	\$106,823,500	Form of Government.....	Commission
County (exclusive of City).....	\$36,712,500	Pro Rata Taxes for Schools.....	30%
Automobiles.....	22,929	Miles Sewers.....	155
Passengers Handled by Street Cars...	17,818,049	Garbage Disposal.....	Incineration
Capital in Industrials.....	\$140,575,000	Water Supply (Moderation Filtration) Tenn. River	
Employes in Industrials.....	36,000	Miles Gas Mains.....	151
Value Manufactured Products.....	\$161,270,527	Number Water Meters.....	25,712
Building (About 60% of Value).....	\$10,120,569	Number Electric Meters.....	29,773
Dwellings.....	\$4,550,000	K. W. H. Electricity Used Annually...	179,653,779
Telephones.....	22,152	Average Annual Temperature (Deg.)...	61.4
Park Acreage.....	5,937	Elevation Above Sea Level (Feet)...	672 to 975
Water Mains (Miles).....	433	Tornadoes and Sunstrokes.....	Unknown
Sidewalks (Miles).....	389	Rail Lines.....	9
Hard Surface Streets (Miles).....	160	Taxicabs.....	209
Hard Surface County Roads (Miles)...	654	Packets and Towboats Tenn. River...	73
Manufacturers (Export).....	100	Population (United States Census):	
Number of Manufacturers.....	400	100-Mile Radius.....	1,440,000
Number of Different Manufactured		200-Mile Radius.....	6,546,000
Products.....	1,500	300-Mile Radius.....	15,478,000
Passenger Trains Daily (In and Out)	68	500-Mile Radius.....	41,211,000

## Write for Additional Information About Chattanooga

If you desire detailed information regarding any of Chattanooga's numerous assets and advantages, complete data may be obtained by writing or visiting the Chamber of Commerce, 819 Broad Street, who will be glad to give full facts relative to Chattanooga as a residential, resort, convention, distributing or industrial center. This information will be cheerfully given upon request.

*Published by* CHATTANOOGA COMMUNITY ADVERTISING ASSOCIATION