

THE vacation sight-seeing tours outlined in this folder have been arranged to leave every Monday, beginning July 3, 1933, for a short-limit trip of seven (7) days at minimum cost, visiting the wonderful Century of Progress International Exposition to be held at Chicago from June to November. These tours are optional—going direct to Chicago and returning via the Great Lakes or cruising on Great Lakes, thence to Chicago and visiting the World's Fair and returning direct—and will also include visits to Milwaukee, Mackinac Island, Detroit and Cleveland—three foremost cities of the Great Midwest, as well as incorporating a cruise on the renowned Great Lakes, thus providing a pleasing diversity in mode of travel and scenic interest.

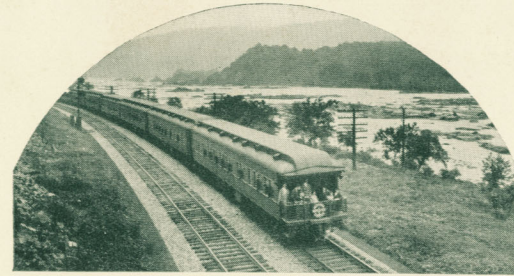
There should be little necessity for urging a visit to the Chicago World's Fair. This exposition promises to be the outstanding event of modern times, and will more than compensate the visitor for the trip. A three-mile stretch of the lovely Lake Michigan shore front at Chicago has been converted into a veritable wonderland of interest. The exposition will depict in a thrilling fashion the story of mankind's advancement during the past hundred years. Thousands of exhibits and structures, and millions of dollars worth of preparation will contribute in building up a gigantic exposition and pageant to astonish and entertain you in ways you have never before experienced. To see this great educational spectacle will be a landmark in your life that will endure forever in the memory.

Although the total "all-expense" fares have been set at the low figure as named herein, all accommodations are first-class throughout, the tours being operated on modern, fast trains and comfortable boat. The party, of course, will stay at excellent hotels in the cities visited. All sight-seeing and transportation arrangements will be looked after by the Baltimore and Ohio representatives accompanying the party in order that you may devote the entire time to the full enjoyment of the trip from the very moment you board the train.

All in all, these trips will provide an ideal vacation tour, combining the advantages of travel by rail and water with the educational and recreational opportunities of sight-seeing. These tours, in addition to their appeal to individuals, teachers and students, are particularly attractive to groups, such as social, fraternal or community organizations, to whom a cordial invitation is extended, with the assurance that their party will be well taken care of and given full opportunity to be together throughout the trip.



Happy hours aboard the cruise ship



RAIL-WATER TOUR "A"

CENTURY OF PROGRESS EXPOSITION

MONDAY

	<i>Train No. 25</i>
Lv. New York (42nd Street Station).....	7.45 a. m.
Lv. Brooklyn (Joralemon Street Station).....	7.45 a. m.
Lv. New York (Jersey City Station).....	8.27 a. m.
Lv. Newark, N. J.	8.20 a. m.
Lv. Elizabeth, N. J.	8.43 a. m.
Lv. Plainfield, N. J.	8.57 a. m.
Lv. Wayne Junction, Pa.	10.02 a. m.
Lv. Philadelphia, Pa.	10.19 a. m.
Lv. Chester, Pa.	10.36 a. m.
Lv. Wilmington, Del.	10.52 a. m.
Lv. Newark, Del.	11.08 a. m.
Lv. Baltimore, Md. (Mt. Royal Station).....	12.14 p. m.
Lv. Baltimore, Md. (Camden Station).....	12.21 p. m.
Lv. Washington, D. C.	1.30 p. m.
Lv. Harper's Ferry, W. Va.	2.46 p. m.
Lv. Shenandoah Junction, W. Va.	2.57 p. m.
Lv. Martinsburg, W. Va.	3.17 p. m.
Lv. Cumberland, Md.	5.02 p. m.

TUESDAY

Ar. Chicago, Ill. (Grand Central Station)..... 8.05 a. m.

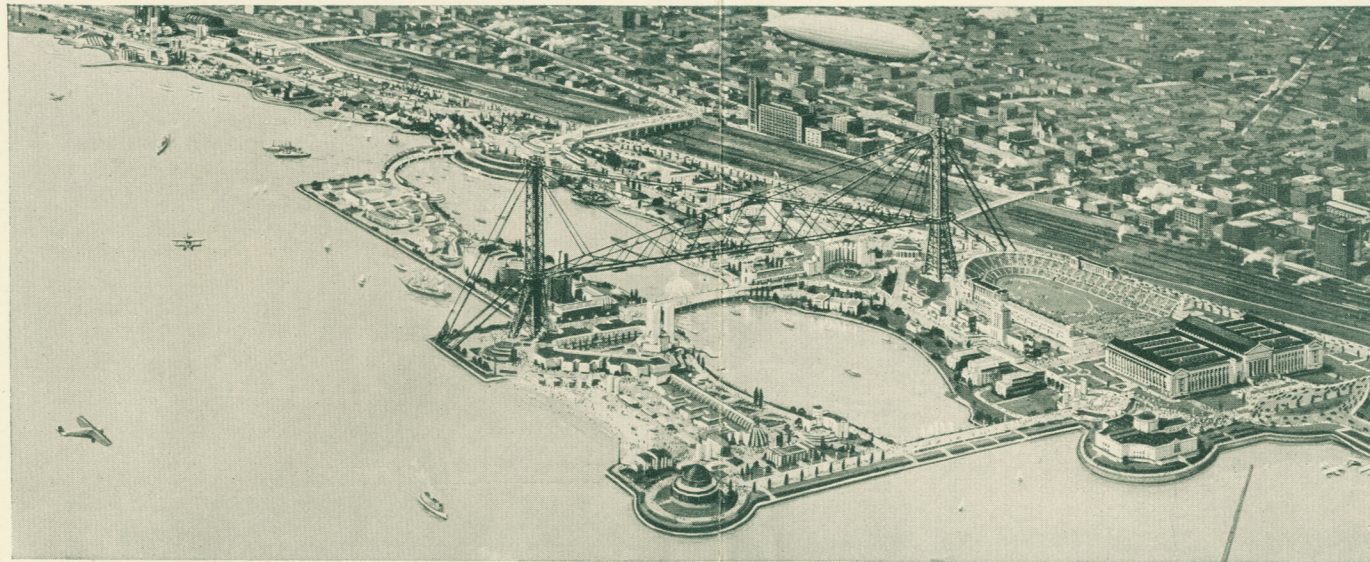
Lunch and Dinner on Monday, and Breakfast on Tuesday to be served in Baltimore and Ohio dining cars en route to Chicago.

Special motor coaches will meet party immediately upon arrival in Chicago and transfer to hotel where party will be accommodated.

9.30 a. m. Motor coaches will leave hotel for a complete Grand Tour of the City of Chicago, including the world's famous parks and boulevards—Grant, Jackson, Washington, Garfield and Lincoln Parks, with a stop at Garfield Park Conservatory on Lake Shore Drive. Lecturers will be provided to point out and describe all points of interest.

12.30 p. m. Arrive "Century of Progress" Exposition Grounds, where lunch will be served before starting on the World's Fair Wonder Tour, under the personal guidance of specially trained lecturers.

The entire afternoon will be spent making this complete tour of the Fair Grounds. No provision is made for the transfer from Fair Grounds to hotel because it is felt many members of the party will desire to make a thorough review of the various buildings. Members of the tour party will make their own arrangements for dinner. Hotel accommodations on basis of two persons to a room, with bath.



© CHICAGO AERIAL SURVEY
A Bird's-eye View of the Century of Progress International Exposition Grounds, Chicago, Ill.

WEDNESDAY

8.00 a. m. Breakfast will be served in the dining room of the hotel.

Members of the party will be provided with an Admission Ticket to the Fair Grounds, making their own transfer arrangements from hotel to the Exposition Grounds. No definite program has been arranged for this day; members of party returning to the hotel not later than 6.00 p. m., at which time dinner will be served in the dining room.

10.00 p. m. Transfer from hotel to the Great Lakes Transit Docks.

Lv. Chicago (Great Lakes Transit)..... 11.00 p. m.

THURSDAY

Ar. Milwaukee..... 7.00 a. m.



At historic Mackinac Island—one of the high spots of the tour

FRIDAY

Ar. Mackinac Island..... 7.00 a. m.

Mackinac Island is the place where once John Astor founded a fur-trading post and the fortune that made his family famous. Mackinac Island boasts a strange mixture of the old and new. Automobiles are banned, yet sporty golf courses greet the visitor. The old trading post is now a hotel. Its huge, creaking gates, fashioned from hand-hewn timbers, with hand-wrought nails, have closed forever on the picturesque characters that stalked through them in centuries past. Yet about them, as all through Mackinac Island, lingers an atmosphere of enchantment—a mysterious atmosphere as if some day time might roll back its curtain and suddenly again would appear on the byways of Mackinac red warriors, swarthy traders and swash-buckling pioneers. Mackinac preserves things as they were. Nature and the train of history have preserved its romantic quaintness from the changes that, all too often, are made under the guise of progress. Here is country that every adult American should see—a land where American children can actually view the places they read of in their history books.

Steamer will remain at Mackinac Island for a period of three hours, affording an opportunity to visit the city.

Lv. Mackinac (Great Lakes Transit)..... 10.00 a. m.

SATURDAY

Ar. Detroit..... 8.00 a. m.

We awake in Detroit, and three hours more are placed at our disposal to get a view of the fourth largest city in America, and the center of the automobile world. Here is the gigantic Ford plant, engineering marvel of the age, as well as the far-flung factories of Chrysler and General Motors. It is difficult to believe that less than fifty years ago Detroit had a population of less than 100,000 people. Many of the largest office buildings in the world command the sight-seer's attention.

Sight-seeing trip covering the above-mentioned points will be provided while in Detroit.

Lv. Detroit (Great Lakes Transit)..... 11.00 a. m.
Ar. Cleveland..... 6.45 p. m.

After arrival in Cleveland, several hours will be open to the individual members of the party before departure for home.

Stateroom accommodations from Wednesday night until Saturday evening, and all meals from breakfast on Thursday, to and including dinner on Saturday, are provided on steamer of the Great Lakes Transit Corporation.

Lv. Cleveland (Baltimore and Ohio)..... 9.15 p. m.

SUNDAY

Ar. Cumberland, Md.	5.17 a. m.
Ar. Martinsburg, W. Va.	7.03 a. m.
Ar. Shenandoah Junction, W. Va.	*7.13 a. m.
Ar. Harper's Ferry, W. Va.	*7.30 a. m.
Ar. Washington, D. C.	†8.45 a. m.
Ar. Baltimore, Md. (Camden Station).....	9.43 a. m.
Ar. Baltimore, Md. (Mt. Royal Station).....	9.51 a. m.
Ar. Newark, Del.	10.56 a. m.
Ar. Wilmington, Del.	11.11 a. m.
Ar. Chester, Pa.	11.28 a. m.
Ar. Philadelphia, Pa.	11.45 a. m.
Ar. Wayne Junction, Pa.	12.07 p. m.
Ar. Plainfield, N. J.	1.10 p. m.
Ar. Elizabeth, N. J.	1.24 p. m.
Ar. Newark, N. J.	1.47 p. m.
Ar. New York (Jersey City Station).....	1.41 p. m.
Ar. New York (42nd Street Station).....	2.23 p. m.
Ar. Brooklyn (Joralemon Street Station).....	2.25 p. m.

* Conditional stops.
† Stopover permitted at Washington without additional cost.

Breakfast and Lunch will be served in Baltimore and Ohio dining cars en route.

All times shown are Standard.

COST OF TOUR "A"

"ALL-EXPENSE" FARE

From	One Person in Lower	Two Persons in Lower	One Person in Upper
New York, N. Y.	\$93.50	\$88.50	\$91.50
Newark, N. J.	93.00	88.00	91.00
Elizabeth, N. J.	93.00	88.00	91.00
Plainfield, N. J.	93.00	88.00	91.00
Wayne Jct., Pa.	88.50	84.00	86.75
Philadelphia, Pa.	88.50	84.00	86.75
Chester, Pa.	88.50	84.00	86.75
Wilmington, Del.	88.50	84.00	86.75
Baltimore, Md.	86.50	82.00	84.75
Washington, D. C.	86.50	82.00	84.75
Hagerstown, Md.	84.00	78.00	80.25
Winchester, Va.	83.00	77.00	80.25
Harper's Ferry, W. Va.	83.00	77.00	80.25
Shenandoah Jct., W. Va.	83.00	77.00	80.25
Martinsburg, W. Va.	83.00	77.00	80.25
Cumberland, Md.	76.00	72.00	74.00



In the heart of Detroit, Mich.

RAIL-WATER TOUR "B"

CENTURY OF PROGRESS EXPOSITION

MONDAY

Lv. New York (42nd Street Station).....	10.25 a. m.
Lv. Brooklyn (Joralemon Street Station).....	10.20 a. m.
Lv. New York (Jersey City Station).....	11.15 a. m.
Lv. Newark, N. J.	11.05 a. m.
Lv. Elizabeth, N. J.	11.31 a. m.
Lv. Plainfield, N. J.	11.46 a. m.
Lv. Wayne Junction, Pa.	12.53 p. m.
Lv. Philadelphia, Pa.	1.12 p. m.
Lv. Chester, Pa.	1.29 p. m.
Lv. Wilmington, Del.	1.45 p. m.
Lv. Newark, Del.	2.01 p. m.
Lv. Baltimore, Md. (Mt. Royal Station).....	3.03 p. m.
Lv. Baltimore, Md. (Camden Station).....	3.10 p. m.
Lv. Washington, D. C.	4.20 p. m.
Lv. Harper's Ferry, W. Va.	5.36 p. m.
Lv. Martinsburg, W. Va.	6.04 p. m.
Lv. Cumberland, Md.	7.48 p. m.
Lv. Pittsburgh, Pa.	11.48 p. m.

Lunch and dinner on Monday, and breakfast on Tuesday, to be served in Baltimore and Ohio dining cars en route to Detroit.

TUESDAY

Ar. Detroit (Baltimore and Ohio)..... 8.30 a. m.

We awake in Detroit, and three hours are placed at our disposal to get a view of the fourth largest city in America, and the center of the automobile world. Here is the gigantic Ford plant, engineering marvel of the age, as well as the far-flung factories of Chrysler and General Motors. It is difficult to believe that less than fifty years ago Detroit had a population of less than 100,000 people. Many of the largest office buildings in the world command the sight-seer's attention.

Sight-seeing trip covering the above-mentioned points will be provided while in Detroit.

Lv. Detroit (D. & C. Nav. Co.)..... 12.30 p. m.

WEDNESDAY

Ar. Mackinac Island..... 8.00 a. m.

Mackinac Island is the place where once John Astor founded a fur-trading post and the fortune that made his family famous. Mackinac Island boasts a strange mixture of the old