



The B&O

SERVES THE NATION'S CAPITAL

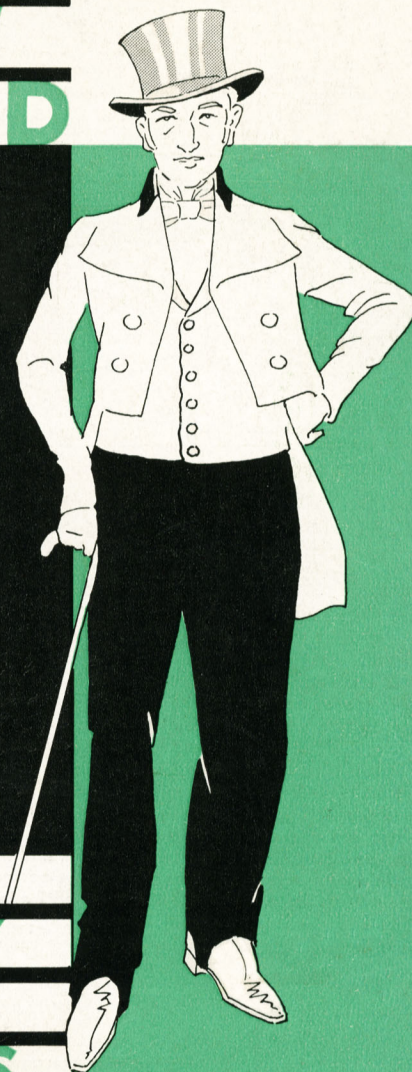
All of its through trains between the East and the West pass through Washington and stop-over is accorded without extra charge.

AMERICA'S OLDEST RAILROAD

The B&O

GREET'S YOU AT

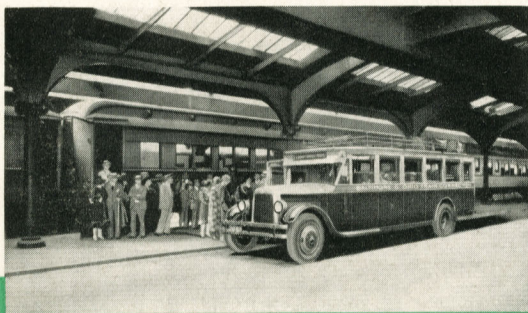
A CENTURY OF PROGRESS



THE NEW-STYLE SUN-ROOM ON THE CAPITOL LIMITED — the only completely air-conditioned train between Chicago and Washington, Baltimore, Philadelphia and New York.



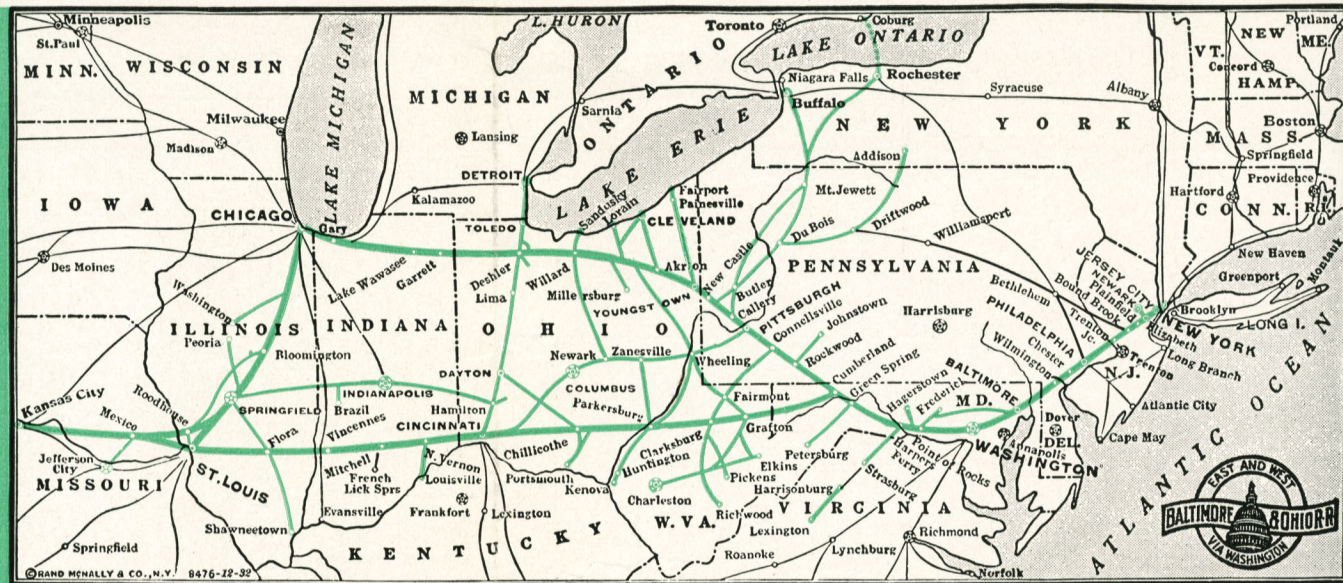
•
NO EXTRA FARE
•



B & O passengers for New York are landed at a choice of thirteen stations in New York and Brooklyn by comfortable motor coaches from trainside at Jersey City, crossing the Hudson and affording a splendid view of New York's famous skyline.

**CHICAGO
MAY 27 - NOVEMBER 1
1933**

The B&O in 1933



ONE hundred and five years have passed since the "corner stone" of the Baltimore & Ohio was laid. Today with its name unchanged—in which respect it is unique among American railways—with over seven thousand miles of line traversing twelve states and the District of Columbia and its splendid passenger train service, it is one of America's greatest railway systems.

It serves the most important cities of what is perhaps the richest region on earth. The passengers view a country which is splendidly scenic and has been richly historic from Colonial days up through the Civil War, in which the Baltimore & Ohio played no small part.

Visitors to the Exposition who contemplate a trip East are invited to consult one of the Chicago Travel Bureaus of the Baltimore & Ohio Railroad, where information and tickets will be gladly furnished.

The addresses are as follows:

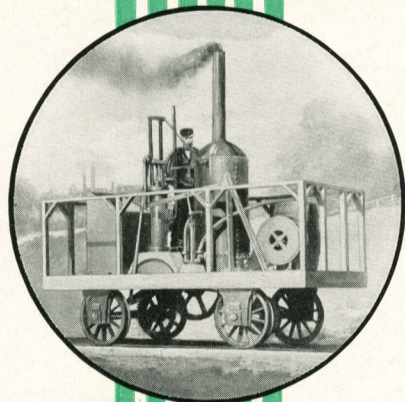
Suite 1322 Bankers Building, Clark and Adams Streets; Telephone Wabash 2211.

Grand Central Station, Harrison and South Wells Streets; Telephones Wabash 2211; Harrison 2393.

City Ticket Office, 163-165 West Jackson Boulevard; Telephone Wabash 2211.

HOTEL TICKET OFFICES—Telephone Harrison 2205-08.
Congress Hotel, South Michigan Avenue and Congress Street.
Great Northern Hotel, Dearborn Street and Jackson Boulevard.
La Salle Hotel, La Salle and West Madison Streets.
Palmer House, State and Monroe Streets.
Sherman Hotel, North Clark and West Randolph Streets.
Stevens Hotel, South Michigan and 7th Streets.

The Baltimore & Ohio also maintains thirty-nine nation-wide passenger traffic offices, where complete travel information may be obtained.



"Tom Thumb"
made its
initial run on
the B & O in
September 1829

The Baltimore & Ohio Is America's Oldest Railroad

FOR over 100 years it has served the American public, for its life extends even beyond the century of achievement, the close of which is being celebrated by Chicago's World's Fair, A CENTURY OF PROGRESS Exposition.

During this century the railroads have played a major role in the building of a Nation, and the "corner stone" of this building was laid at Baltimore, this historic ceremony marking the birth not only of the Baltimore & Ohio, but of America's present magnificent railway system.

Not only was the Baltimore & Ohio America's pioneer railroad in point of time, but it has ever been a pioneer in the adoption of improved methods and facilities of transportation. This constant effort to raise the standards of comfort in railroad travel is in line with the established policy of this company to furnish something more than just transportation.

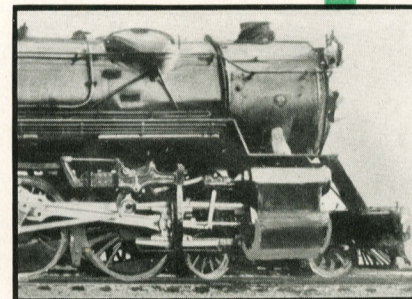
As evidence of this, the Baltimore & Ohio is pleased to describe briefly herein some of the outstanding innovations which it has recently inaugurated for the greater travel comfort and convenience of its patrons. It is also pleased to acknowledge the commendation with which these improvements have been received by the public.

You are cordially invited to make use of Baltimore & Ohio service whenever you travel through the territory which it serves.

The B&O

*The railroad operating the world's largest fleet of
Air-Conditioned trains.*

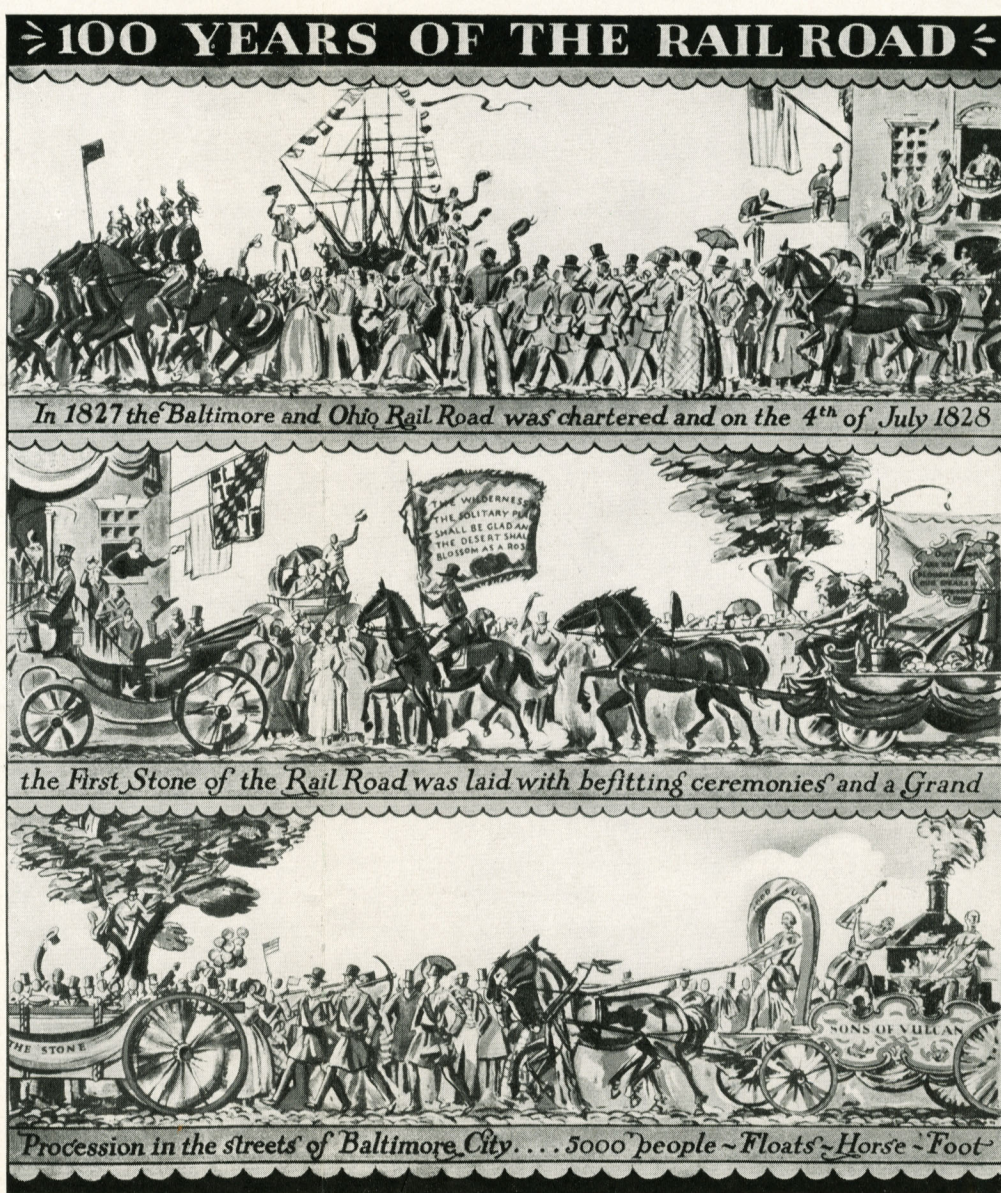
THE CAPITOL LIMITED • THE NATIONAL LIMITED
THE COLUMBIAN • THE ALTON LIMITED



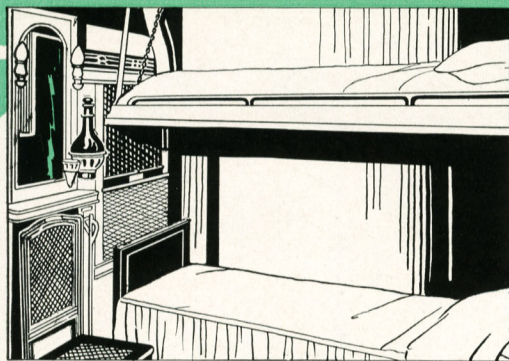
106 YEARS AGO

THE panels shown herewith are representations of a procession which took place on the streets of Baltimore, Md., in celebration of the laying of the "corner stone" of the Baltimore & Ohio Railroad. This procession was faithfully reproduced at the now historic "Fair of the Iron Horse" given by the Baltimore & Ohio at Halthorpe, Md., in 1927 celebrating the centenary of the railroad.

*This original First Stone of the Baltimore & Ohio Railroad has been temporarily removed from Baltimore to Chicago, where it may be actually viewed in the Baltimore & Ohio Exhibit in the Travel and Transport Building of the Century of Progress International Exposition.

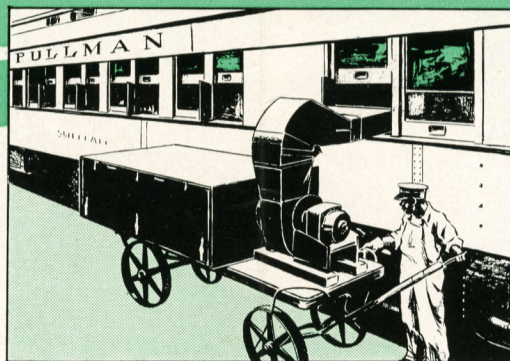


A FEW OF THE INNOVATIONS IN THE CONVENIENCE AND COMFORT OF RAILWAY TRAVEL WHICH WERE RECENTLY INAUGURATED BY THE B & O ARE SHOWN BELOW



PRIVATE BEDROOM SLEEPERS

For the accommodation of overnight travelers who desire greater sleeping comfort and privacy, the Baltimore & Ohio has in service private-room sleeping cars with real beds and upper berths. Each car has thirteen private rooms, compact, yet roomy. Each room has a full-length single bed with thick mattresses, insuring restful sleep, and in addition there is a large comfortable upper berth. Shaded wall lights and electric fan are operated from the bed. An upholstered chair cleverly conceals a lavatory and toilet which disappear when not in use. There are also a large mirror, shaded wall lights, thermos bottle, hot and cold running water, and many other distinctive features. These rooms may be occupied singly or en suite. The Baltimore & Ohio was active in the planning and developing of this type of car, and was one of the first railroads to place them in service.



PRE-COOLING OF SLEEPING CARS

For the greater comfort and convenience of travelers making over-night trips, the Baltimore & Ohio, during the summer season, operates a system of pre-cooling parked sleeping cars in a number of our large cities. Some time before the cars are opened for passengers, a special machine (made and patented by the Baltimore & Ohio Railroad) is placed alongside the car and injects fresh, cool air into the car, the hot air being drawn out by means of an exhaust fan. The temperature is lowered without causing drafts or chilliness, so that you may retire in comfort no matter how hot the outside temperature may be—a service that was provided first by the Baltimore & Ohio Railroad.



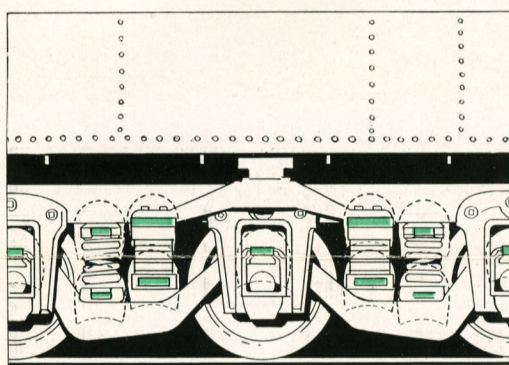
RECLINING SEAT COACHES

In developing a new type of reclining individual seat coach, the Baltimore & Ohio achieved an outstanding improvement in passenger travel comfort and convenience. These cars were especially designed for overnight travelers who do not desire to avail themselves of Pullman sleeping-car accommodations. The seats are richly upholstered and double cushioned, with arm rests of Spanish rubber composition to promote the utmost ease. Footrests are also provided, adjustable to the proper angle. The seat backs may be regulated for reclining position. A unique feature is the lunch counter compartment, in charge of a competent attendant. Here light lunches, including sandwiches and soft drinks, are served at moderate prices (no article over ten cents) under the most sanitary conditions. This particular type of car is another Baltimore & Ohio innovation in service on no other railroad.



INDIVIDUAL SEAT COACHES

Distinctive in design, beautiful in appointments and considerably more comfortable than the regulation standard day coaches. They are equipped with individual window ventilators, large lavatories with hot and cold running water, twenty exhaust ventilators and four 2-speed diffusion fans which keep the cars supplied with fresh air at all times. This style of car was designed by and placed in service first on the Baltimore & Ohio Railroad.



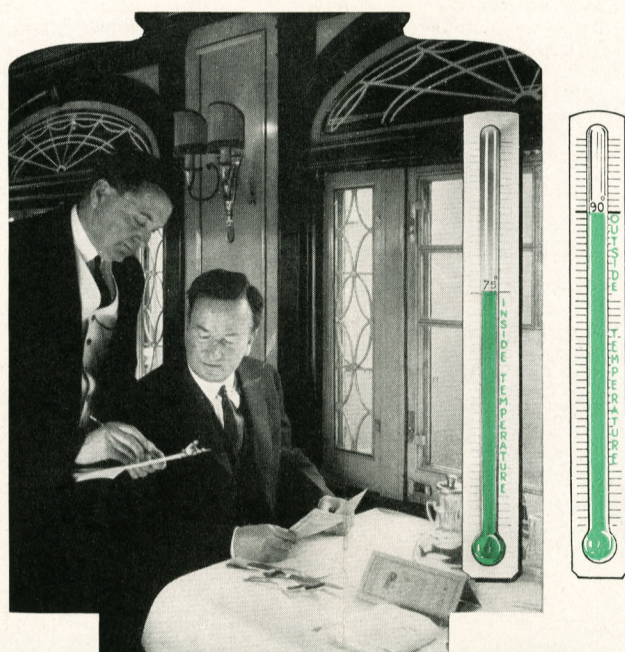
RUBBERIZED TRUCKS

All Baltimore & Ohio cars on our more important trains are equipped with rubberized trucks of the standard Pullman 6-wheel type. At all contact points in the trucks—at points where the frame rests and at spring ends—wherever metal touches metal—is placed a thick rubber pad. There are fifty-one of these pads in each truck. This very materially reduces vibration and means a smooth, joltless ride.

AIR-CONDITIONING

The Supreme Travel Comfort on the B & O

COOL IN SUMMER
WARM IN WINTER
CLEAN THE YEAR 'ROUND



It may be 90 or 20 degrees outside, but it's always comfortable aboard B. & O. air-conditioned trains. In summer, these fine trains are equipped with a system that removes dust, dirt and smoke; cools the air and corrects unpleasant humidity. Windows are for vision only. Being closed they keep impurities from entering and add greatly to the quietness inside the cars. Cool, refreshing sleep on the hottest night.

In winter, a healthful and comfortable air condition is promoted by fresh air from the outside being constantly drawn into the cars and filtered to remove dirt and other impurities. This clean, fresh air is distributed evenly and without drafts—controlled by means of an automatic ventilation system. A uniform temperature is maintained by thermostatically-controlled heating.

So it makes no difference whether you travel in summer or in winter—whether in the Club car, Dining car, Sun-Parlor, Observation-Lounge or Sleeping car—you enjoy this same delightful atmosphere for the entire train is air-conditioned.

THE B & O NOW OPERATES THE WORLD'S LARGEST FLEET OF AIR-CONDITIONED TRAINS

CAPITOL LIMITED
NEW YORK—PHILADELPHIA
BALTIMORE—WASHINGTON
CHICAGO

THE COLUMBIAN
NEW YORK—PHILADELPHIA
BALTIMORE—WASHINGTON

NATIONAL LIMITED
NEW YORK—PHILADELPHIA
BALTIMORE—WASHINGTON
CINCINNATI—LOUISVILLE—ST. LOUIS

ALTON LIMITED
CHICAGO—SPRINGFIELD
ST. LOUIS